

For Research Use Only

Alpha Synuclein Monoclonal antibody, PBS Only (Detector)

Catalog Number: 66412-1-PBS



Basic Information

Catalog Number:

66412-1-PBS

Concentration:

1000 μ g/ml

Source:

Mouse

Isotype:

IgG2a

Immunogen Catalog Number:

AG1285

GenBank Accession Number:

BC013293

GeneID (NCBI):

6622

UNIPROT ID:

P37840

Full Name:

synuclein, alpha (non A4 component
of amyloid precursor)

Calculated MW:

14 kDa

Observed MW:

18-19 kDa

Purification Method:

Protein A purification

CloneNo.:

1B10E9

Applications

Tested Applications:

WB, IHC, IF-P, Sandwich ELISA, Indirect ELISA

Species Specificity:

human, mouse, rat

Background Information

Alpha Synuclein (α -syn) is a 14-19 kDa phosphoprotein that is primarily localized to the presynaptic terminals of mature neurons, where it is involved in synaptic function and plasticity. α -syn has drawn intense interest ever since the late 1990s, when the first α -synuclein missense mutation was identified as a cause of familial Parkinson's disease (PD). Aggregated and hyper-phosphorylated forms of α -syn protein are the pathological hallmark of Lewy body disease, which includes Parkinson's disease (PD), diffuse Lewy body disease (DLBD), and Lewy body variant of Alzheimer's disease (LBV). This antibody can recognize all the isoforms of α -syn.

Storage

Storage:

Store at -80°C.

The product is shipped with ice packs. Upon receipt, store it immediately at -80°C

Storage Buffer:

PBS only, pH7.3

For technical support and original validation data for this product please contact:

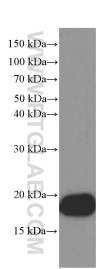
T: 4006900926

E: Proteintech-CN@ptglab.com

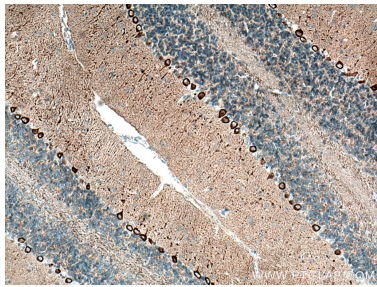
W: ptgcn.com

This product is exclusively available under Proteintech Group brand and is not available to purchase from any other manufacturer.

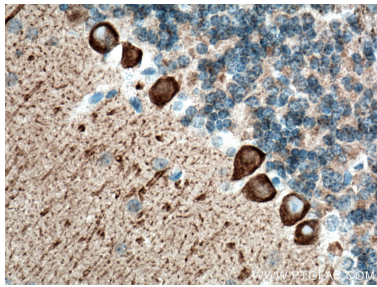
Selected Validation Data



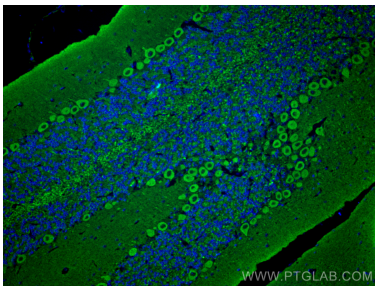
mouse brain tissue were subjected to SDS PAGE followed by western blot with 66412-1-Ig (a-Synuclein Antibody) at dilution of 1:1000 incubated at room temperature for 1.5 hours. This data was developed using the same antibody clone with 66412-1-PBS in a different storage buffer formulation.



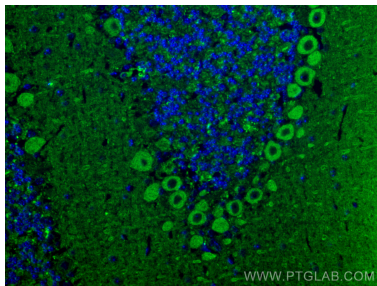
Immunohistochemical analysis of paraffin-embedded mouse cerebellum tissue slide using 66412-1-Ig (alpha-Synuclein antibody) at dilution of 1:1000 (under 10x lens). Heat mediated antigen retrieval with Tris-EDTA buffer (pH 9.0). This data was developed using the same antibody clone with 66412-1-PBS in a different storage buffer formulation.



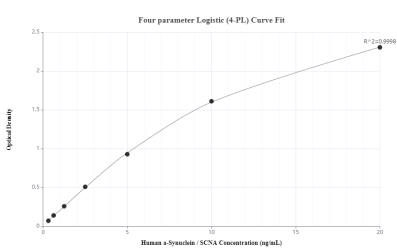
Immunohistochemical analysis of paraffin-embedded mouse cerebellum tissue slide using 66412-1-Ig (alpha-Synuclein antibody) at dilution of 1:1000 (under 40x lens). Heat mediated antigen retrieval with Tris-EDTA buffer (pH 9.0). This data was developed using the same antibody clone with 66412-1-PBS in a different storage buffer formulation.



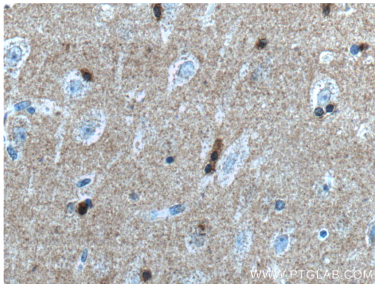
Immunofluorescent analysis of (4% PFA) fixed paraffin-embedded mouse cerebellum tissue using Alpha Synuclein antibody (66412-1-Ig, Clone: 1B10E9) at dilution of 1:400 and Multi-rAb CoraLite® Plus 488-Goat Anti-Mouse Recombinant Secondary Antibody (H+L) (RGAM002). Heat mediated antigen retrieval with Tris-EDTA buffer (pH 9.0). This data was developed using the same antibody clone with 66412-1-PBS in a different storage buffer formulation.



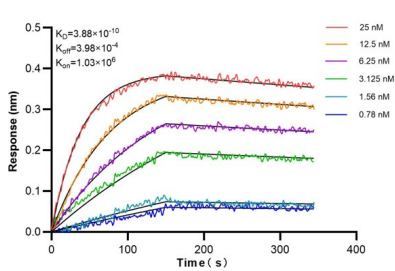
Immunofluorescent analysis of (4% PFA) fixed paraffin-embedded mouse cerebellum tissue using Alpha Synuclein antibody (66412-1-Ig, Clone: 1B10E9) at dilution of 1:400 and Multi-rAb CoraLite® Plus 488-Goat Anti-Mouse Recombinant Secondary Antibody (H+L) (RGAM002). Heat mediated antigen retrieval with Tris-EDTA buffer (pH 9.0). This data was developed using the same antibody clone with 66412-1-PBS in a different storage buffer formulation.



Sandwich ELISA standard curve of MP50043-1, a-Synuclein Monoclonal Matched Antibody Pair, PBS Only. Capture antibody: 60285-1-PBS. Detection antibody: 66412-1-PBS. Standard: Ag1285. Range: 0.313-20 ng/mL



Immunohistochemical analysis of paraffin-embedded human brain tissue slide using 66412-1-Ig (a-Synuclein antibody) at dilution of 1:500 (under 40x lens). Heat mediated antigen retrieval with Tris-EDTA buffer (pH 9.0). This data was developed using the same antibody clone with 66412-1-PBS in a different storage buffer formulation.



Biolayer interferometry (BLI) kinetic assays of 66412-1-Ig against Human SNCA were performed. The affinity constant is 0.388 nM.