

Beta Catenin Monoclonal antibody

Catalog Number: 66379-1-Ig

Featured Product

113 Publications

Basic Information

Catalog Number:

66379-1-Ig

Concentration:

1500 ug/ml

Source:

Mouse

Isotype:

IgG1

GenBank Accession Number:

NM_001904

GeneID (NCBI):

1499

ENSEMBL Gene ID:

ENSG00000168036

UNIPROT ID:

P35222

Full Name:

catenin (cadherin-associated protein),
beta 1, 88kDa

Calculated MW:

781 aa, 86 kDa

Observed MW:

92 kDa

Purification Method:

Protein G purification

CloneNo.:

1B8A1

Recommended Dilutions:

WB: 1:5000-1:50000

IP: 0.5-4.0 ug for 1.0-3.0 mg of total
protein lysate

IHC: 1:10000-1:40000

IF-P: 1:200-1:800

IF/ICC: 1:750-1:3000

FC (Intra): 0.50 ug per 10⁶ cells in a
100 µl suspension

Applications

Tested Applications:

WB, IHC, IF/ICC, IF-P, FC (Intra), IP, ELISA

Cited Applications:

WB, IHC, IF, IP, CoIP

Species Specificity:

human, mouse, rat, pig

Cited Species:

human, mouse, rat, pig, sheep

**Note-IHC: suggested antigen retrieval with
TE buffer pH 9.0; (*) Alternatively, antigen
retrieval may be performed with citrate
buffer pH 6.0**

Positive Controls:

WB: A431 cells, pig brain tissue, rat brain tissue,
mouse brain tissue, HeLa cells, HEK-293 cells, MCF-7
cells, LNCaP cells, HSC-T6 cells, NIH/3T3 cells, rabbit
brain tissue

IP: mouse brain tissue,

IHC: mouse colon tissue, human breast cancer tissue,
human colon tissue, human ovary cancer tissue,
human skin cancer tissue, rat colon tissue

IF-P: human colon cancer tissue, human skin cancer
tissue

IF/ICC: MCF-7 cells, human liver cancer tissue, human
skin cancer tissue

FC (Intra): MCF-7 cells,

Background Information

β-Catenin, also known as CTNNB1, is an evolutionarily conserved, multifunctional intracellular protein. β-Catenin was originally identified in cell adherens junctions (AJs) where it functions to bridge the cytoplasmic domain of cadherins to α-catenin and the actin cytoskeleton. Besides its essential role in the AJs, β-catenin is also a key downstream component of the canonical Wnt pathway that plays diverse and critical roles in embryonic development and adult tissue homeostasis. The Wnt/β-catenin pathway is also involved in the activation of other intracellular messengers such as calcium fluxes, JNK, and SRC kinases. Deregulation of β-catenin activity is associated with multiple diseases including cancers. (PMID: 22617422; 18334222)

Notable Publications

Author	Pubmed ID	Journal	Application
Panpan Zhang	30272329	Int J Mol Med	WB
Tao Sun	34520626	Kaohsiung J Med Sci	WB, IF
Haifeng Zhang	34428354	FEBS Open Bio	WB

Storage

Storage:

Store at -20°C. Stable for one year after shipment.

Storage Buffer:

PBS with 0.02% sodium azide and 50% glycerol, pH7.3

Aliquoting is unnecessary for -20°C storage

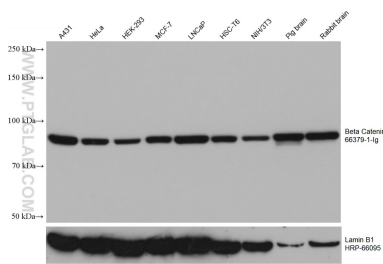
For technical support and original validation data for this product please contact:

T: 4006900926

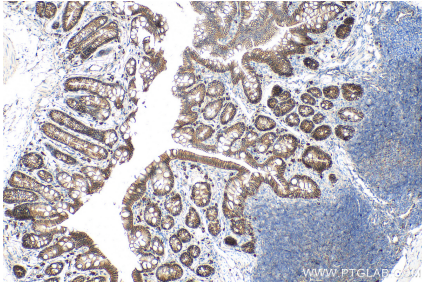
E: Proteintech-CN@ptglab.comW: ptgcn.com

**This product is exclusively available under Proteintech
Group brand and is not available to purchase from any
other manufacturer.**

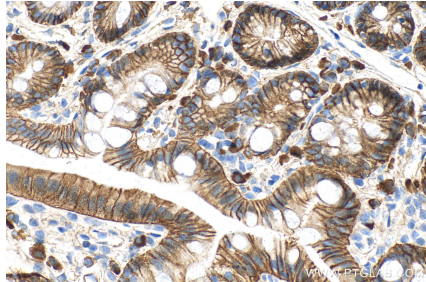
Selected Validation Data



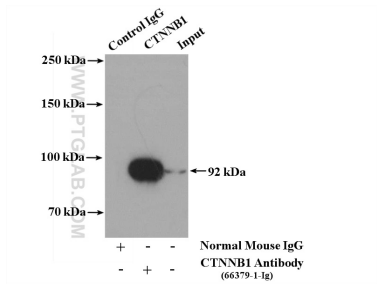
Various lysates were subjected to SDS PAGE followed by western blot with 66379-1-Ig (Beta Catenin antibody) at dilution of 1:15000 incubated at room temperature for 1.5 hours. The membrane was stripped and reblotted with HRP-conjugated Lamin B1 Monoclonal antibody (HRP-66095) as loading control.



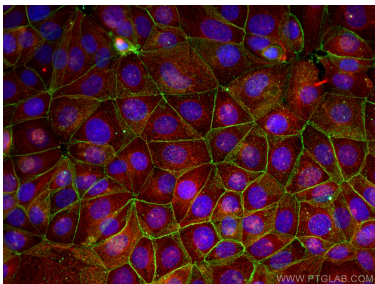
Immunohistochemical analysis of paraffin-embedded mouse colon tissue slide using 66379-1-Ig (Beta Catenin antibody) at dilution of 1:20000 (under 10x lens). Heat mediated antigen retrieval with Tris-EDTA buffer (pH 9.0).



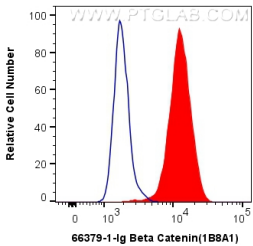
Immunohistochemical analysis of paraffin-embedded mouse colon tissue slide using 66379-1-Ig (Beta Catenin antibody) at dilution of 1:20000 (under 40x lens). Heat mediated antigen retrieval with Tris-EDTA buffer (pH 9.0).



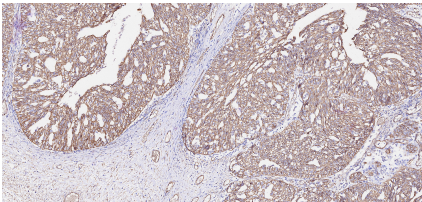
IP result of anti-Beta Catenin (IP:66379-1-Ig, 4ug; Detection:66379-1-Ig 1:2000) with mouse brain tissue lysate 4400 ug.



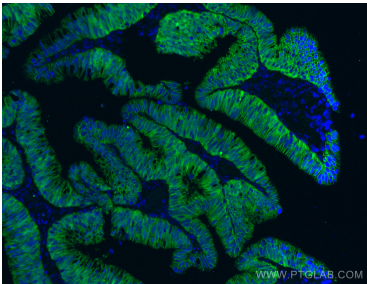
Immunofluorescent analysis of (4% PFA) fixed MCF-7 cells using Beta Catenin antibody (66379-1-Ig, Clone: 1B8A1) at dilution of 1:1500 and CoraLite® 488-Conjugated AffiniPure Goat Anti-Mouse IgG(H+L), Alpha Tubulin antibody (11224-1-AP, red).



1X10⁶ MCF-7 cells were intracellularly stained with 0.5 ug Anti-Human Beta Catenin (66379-1-Ig, Clone:1B8A1) (red) labeled with FlexAble CoraLite® Plus 555 Antibody Labeling Kit for Mouse IgG1 (KFA022), or 0.5 ug Control Antibody. Cells were fixed with 4% PFA and permeabilized with Flow Cytometry Perm Buffer (PF00011-C).



Immunohistochemical analysis of paraffin-embedded human ovary cancer tissue slide using 66379-1-Ig (Beta Catenin antibody) at dilution of 1:40000 (under 10x lens). Heat mediated antigen retrieval with Tris-EDTA buffer (pH 9.0).



Immunofluorescent analysis of (4% PFA) fixed paraffin-embedded human colon cancer tissue using Beta Catenin antibody (66379-1-Ig, Clone: 1B8A1) at dilution of 1:400 and CoraLite® 488-Conjugated Goat Anti-Mouse IgG(H+L) (SA00013-1). Heat mediated antigen retrieval with Tris-EDTA buffer (pH 9.0).