

For Research Use Only

Tubulin Beta Class V Monoclonal antibody

Catalog Number: 66362-1-Ig **7 Publications**



Basic Information

Catalog Number:

66362-1-Ig

Concentration:

1000 µg/ml

Source:

Mouse

Isotype:

IgG1

GenBank Accession Number:

NM_032525

GeneID (NCBI):

84617

Full Name:

tubulin, beta 6

Calculated MW:

50 kDa

Observed MW:

50 kDa

Purification Method:

Protein G purification

CloneNo.:

1D7B9

Recommended Dilutions:

WB: 1:500-1:2000

IHC: 1:50-1:500

IF/ICC: 1:50-1:500

Applications

Tested Applications:

WB, IHC, IF/ICC, ELISA

Cited Applications:

WB, IHC

Species Specificity:

human, mouse, Canine

Cited Species:

human, mouse, rat

Note-IHC: suggested antigen retrieval with TE buffer pH 9.0; (*) Alternatively, antigen retrieval may be performed with citrate buffer pH 6.0

Positive Controls:

WB: HeLa cells, human testis tissue, NCCIT cell, NIH/3T3 cells

IHC: human lung cancer tissue, human breast cancer tissue

IF/ICC: MDCK cells,

Background Information

Tubulin beta class V, encoded by TUBB6, is an isotype of beta tubulin, the major component of microtubule. It is widely expressed in many tissues. In normal tissues, tubulin beta class V is focally expressed in ciliary structure, while in cancer tissues it exhibited a diffuse staining pattern. The alterations of its expression in tumors suggest tubulin beta class V may be used as a biomarker for some solid tumors.

Notable Publications

Author	Pubmed ID	Journal	Application
Fu Chen	32976883	Life Sci	WB
Ling You	36186576	Mediators Inflamm	WB
Torben J Hausrat	32293117	Dev Neurobiol	WB

Storage

Storage:

Store at -20°C. Stable for one year after shipment.

Storage Buffer:

PBS with 0.02% sodium azide and 50% glycerol, pH7.3

Aliquoting is unnecessary for -20°C storage

For technical support and original validation data for this product please contact:

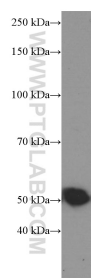
T: 4006900926

E: Proteintech-CN@ptglab.com

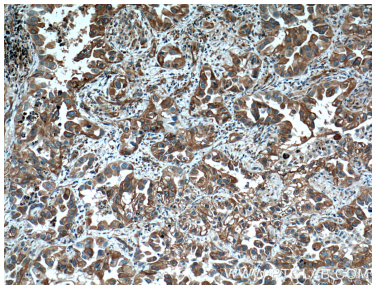
W: ptgcn.com

This product is exclusively available under Proteintech Group brand and is not available to purchase from any other manufacturer.

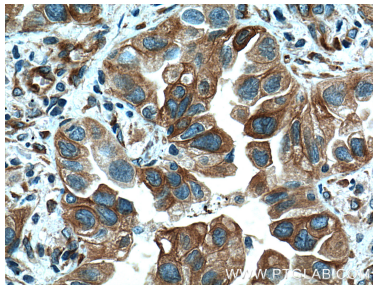
Selected Validation Data



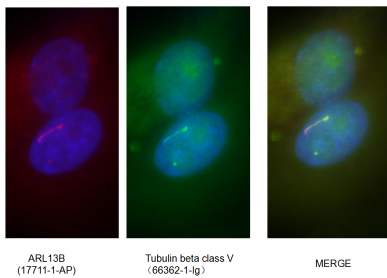
HeLa cells were subjected to SDS PAGE followed by western blot with 66362-1-Ig (Tubulin beta class V Antibody) at dilution of 1:1000 incubated at room temperature for 1.5 hours.



Immunohistochemical analysis of paraffin-embedded human lung cancer tissue slide using 66362-1-Ig (Tubulin beta class V Antibody) at dilution of 1:200 (under 10x lens). Heat mediated antigen retrieval with Tris-EDTA buffer (pH 9.0).



Immunohistochemical analysis of paraffin-embedded human lung cancer tissue slide using 66362-1-Ig (Tubulin beta class V Antibody) at dilution of 1:200 (under 40x lens). Heat mediated antigen retrieval with Tris-EDTA buffer (pH 9.0).



Immunofluorescent analysis of (4% PFA) fixed MDCK cells using 66362-1-Ig(Tubulin beta class V antibody) at dilution of 1:100 and Alexa Fluor 488-conjugated Goat Anti-Mouse IgG(H+L).