

For Research Use Only

# Mouse IgG2b isotype control Monoclonal antibody

Catalog Number: 66360-3-Ig **7 Publications**



## Basic Information

Catalog Number:

66360-3-Ig

Concentration:

1000 µg/ml

Source:

Mouse

Isotype:

IgG2b

GenBank Accession Number:

GeneID (NCBI):

Full Name:

Purification Method:

Protein A purification

CloneNo.:

11B8C4

Recommended Dilutions:

WB: 1:500-1:2000

IHC: 1:1500-1:6000

FC: 0.50 µg per 10<sup>6</sup> cells in a 100 µl suspension

## Applications

Tested Applications:

WB, IHC, FC, ELISA

Cited Applications:

WB, IP, ChIP

Species Specificity:

megathura crenulata

**Note-IHC: suggested antigen retrieval with TE buffer pH 9.0; (\*) Alternatively, antigen retrieval may be performed with citrate buffer pH 6.0**

Positive Controls:

WB: ,

IHC: ,

FC: human PBMCs,

## Background Information

This antibody is used as the isotype control of mouse IgG2b. It can be used as the isotype control in Flow Cytometry, Immuno-Precipitation and other experiments. The immunogen of this antibody is Keyhole Limpet Hemocyanin (KLH).

## Notable Publications

Author	Pubmed ID	Journal	Application
Kai Liu	36186122	Aging Dis	WB
Yanan Chen	32444687	Sci Rep	IP
Liang Liu	34381702	Front Oncol	ChIP

## Storage

Storage:

Store at -20°C. Stable for one year after shipment.

Storage Buffer:

PBS with 0.02% sodium azide and 50% glycerol, pH7.3

Aliquoting is unnecessary for -20°C storage

For technical support and original validation data for this product please contact:

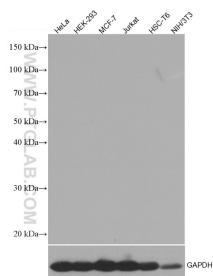
T: 4006900926

E: Proteintech-CN@ptglab.com

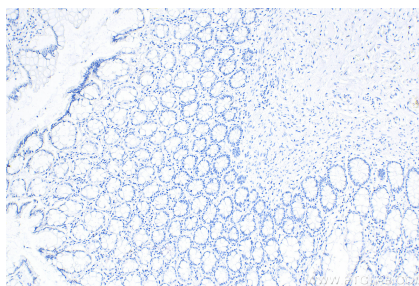
W: ptgcn.com

**This product is exclusively available under Proteintech Group brand and is not available to purchase from any other manufacturer.**

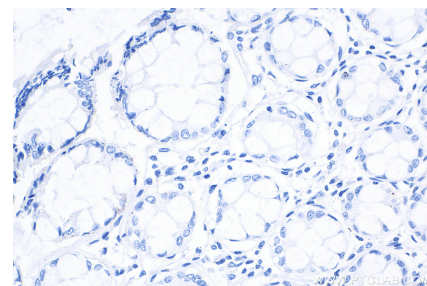
## Selected Validation Data



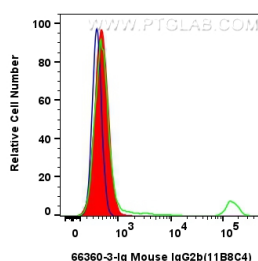
Various lysates (50 ug/lane) were subjected to SDS PAGE followed by western blot with 66360-3-Ig (Mouse IgG2b isotype control antibody) at dilution of 1:1000 incubated at room temperature for 1.5 hours.



Immunohistochemical analysis of paraffin-embedded human colon tissue slide using 66360-3-Ig (Mouse IgG2b isotype control antibody) at dilution of 1:2000 (under 10x lens). Heat mediated antigen retrieval with Tris-EDTA buffer (pH 9.0).



Immunohistochemical analysis of paraffin-embedded human colon tissue slide using 66360-3-Ig (Mouse IgG2b isotype control antibody) at dilution of 1:2000 (under 40x lens). Heat mediated antigen retrieval with Tris-EDTA buffer (pH 9.0).



1x10<sup>6</sup> human PBMCs were surface stained with 0.5 ug Mouse IgG2b isotype control Monoclonal antibody (66360-3-Ig, Clone: 11B8C4) and CoraLite®488-Conjugated Goat Anti-Mouse IgG(H+L) (SA00013-1) (red), or 0.5 ug Anti-Human CD20 (65085-1-Ig) and CoraLite®488-Conjugated Goat Anti-Mouse IgG(H+L) (SA00013-1) (green), or unstained (blue). Cells were not fixed.