

For Research Use Only

Annexin A1 Monoclonal antibody

Catalog Number: 66344-1-Ig

Featured Product

10 Publications



Basic Information

Catalog Number:

66344-1-Ig

Concentration:

1000 ug/ml

Source:

Mouse

Isotype:

IgG1

Immunogen Catalog Number:

AG17273

GenBank Accession Number:

BC001275

GeneID (NCBI):

301

UNIPROT ID:

P04083

Full Name:

annexin A1

Calculated MW:

346 aa, 39 kDa

Observed MW:

35 kDa

Purification Method:

Protein A purification

CloneNo.:

1E1B7

Recommended Dilutions:

WB: 1:5000-1:50000

IHC: 1:50-1:500

IF/ICC: 1:400-1:1600

FC (Intra): 0.80 ug per 10⁶ cells in a 100 µl suspension

Applications

Tested Applications:

WB, IHC, IF/ICC, FC (Intra), ELISA

Cited Applications:

WB, IHC, IF

Species Specificity:

human, mouse, rat

Cited Species:

human, mouse

Note-IHC: suggested antigen retrieval with TE buffer pH 9.0; (*) Alternatively, antigen retrieval may be performed with citrate buffer pH 6.0

Positive Controls:

WB : A549 cells, HeLa cells, A431 cells, NIH/3T3 cells, 4T1 cells, HCT 116 cells, Jurkat cells, K-562 cells, HepG2 cells

IHC : human stomach tissue, human liver tissue, human pancreas tissue, mouse liver tissue

IF/ICC : A549 cells,

FC (Intra) : K-562 cells,

Background Information

ANXA1, also named as ANX1, LPC1 and p35, belongs to the annexin family. It is a member of the annexin family of Ca²⁺-binding and phospholipidbinding proteins, and it is particularly abundant in various populations of peripheral blood leukocytes. ANXA1 regulates phospholipase A2 activity. It seems to bind from two to four calcium ions with high affinity. ANXA1 is a pleiotrophic protein produced by many cell types including peripheral blood leucocytes.

Notable Publications

| Author | Pubmed ID | Journal | Application |
|------------------|-----------|----------------|-------------|
| Emna Ouni | 35341935 | Matrix Biol | IF |
| Bin Yan | 35775939 | J Mater Chem B | IHC |
| Maria Fankhaenel | 36631478 | Nat Commun | IF |

Storage

Storage:

Store at -20°C. Stable for one year after shipment.

Storage Buffer:

PBS with 0.02% sodium azide and 50% glycerol, pH7.3

Aliquoting is unnecessary for -20°C storage

For technical support and original validation data for this product please contact:

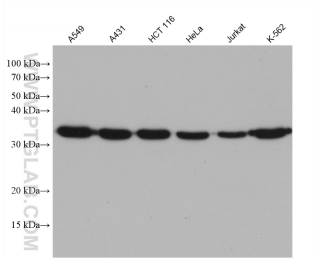
T: 4006900926

E: Proteintech-CN@ptglab.com

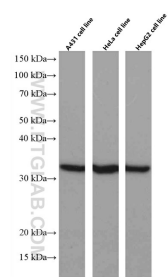
W: ptgcn.com

This product is exclusively available under Proteintech Group brand and is not available to purchase from any other manufacturer.

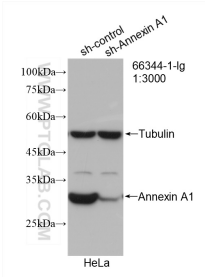
Selected Validation Data



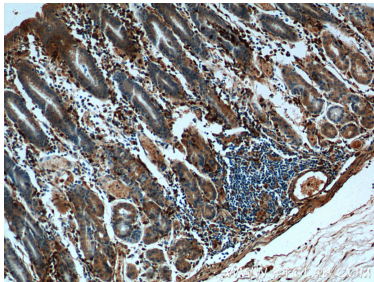
Various lysates were subjected to SDS PAGE followed by western blot with 66344-1-Ig (Annexin A1 antibody) at dilution of 1:20000 incubated at room temperature for 1.5 hours.



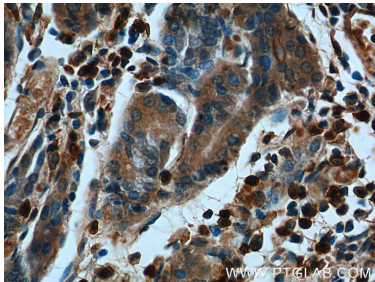
Various lysates were subjected to SDS PAGE followed by western blot with 66344-1-Ig (Annexin A1 antibody) at dilution of 1:5000 incubated at room temperature for 1.5 hours.



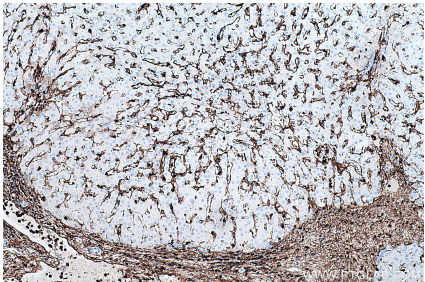
WB result of Annexin A1 antibody (66344-1-Ig; 1:3000; incubated at room temperature for 1.5 hours) with sh-Control and sh-Annexin A1 transfected HeLa cells.



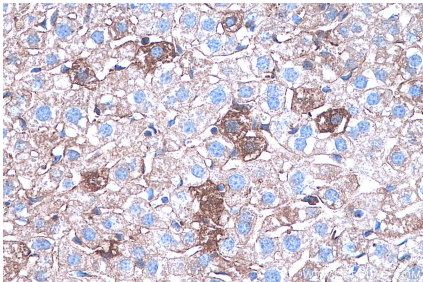
Immunohistochemical analysis of paraffin-embedded human stomach tissue slide using 66344-1-Ig (Annexin A1 antibody at dilution of 1:200 (under 10x lens).



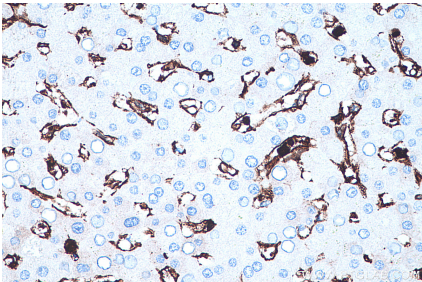
Immunohistochemical analysis of paraffin-embedded human stomach tissue slide using 66344-1-Ig (Annexin A1 antibody at dilution of 1:200 (under 40x lens).



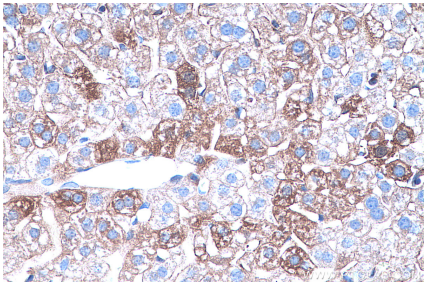
Immunohistochemical analysis of paraffin-embedded human liver tissue slide using 66344-1-Ig (Annexin A1 antibody) at dilution of 1:16000 (under 10x lens). Heat mediated antigen retrieval with Tris-EDTA buffer (pH 9.0).



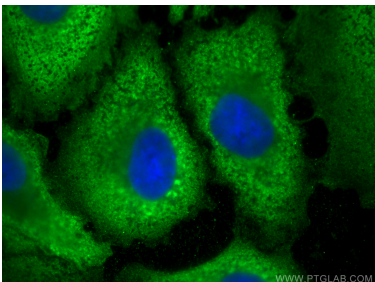
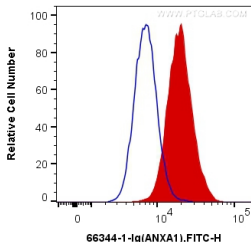
Immunohistochemical analysis of paraffin-embedded mouse liver tissue slide using 66344-1-Ig (Annexin A1 antibody) at dilution of 1:16000 (under 40x lens). Heat mediated antigen retrieval with Tris-EDTA buffer (pH 9.0).



Immunohistochemical analysis of paraffin-embedded human liver tissue slide using 66344-1-Ig (Annexin A1 antibody) at dilution of 1:16000 (under 40x lens). Heat mediated antigen retrieval with Tris-EDTA buffer (pH 9.0).



Immunohistochemical analysis of paraffin-embedded mouse liver tissue slide using 66344-1-Ig (Annexin A1 antibody) at dilution of 1:16000 (under 40x lens). Heat mediated antigen retrieval with Tris-EDTA buffer (pH 9.0).



1X10⁶ K-562 cells were intracellularly stained with 0.8 ug Anti-Human Annexin A1 (66344-1-Ig, Clone:1E1B7) and CoraLite®488-Conjugated AffiniPure Goat Anti-Mouse IgG(H+L) at dilution 1:1000 (red), or 0.8 ug Mouse IgG1 Isotype Control (66360-1-Ig, Clone: T1F8D3F10) (blue). Cells were fixed with 4% PFA and permeabilized with Flow Cytometry Perm Buffer (PF00011-C).

Immunofluorescent analysis of (-20°C Methanol) fixed A549 cells using Annexin A1 antibody (66344-1-Ig, Clone: 1E1B7) at dilution of 1:800 and Multi-rAb CoraLite ® Plus 488-Goat Anti-Mouse Recombinant Secondary Antibody (H+L) (RGAM002).