

For Research Use Only

EPCAM/CD326 Monoclonal antibody

Catalog Number: 66316-1-Ig

Featured Product

14 Publications



Basic Information

Catalog Number:

66316-1-Ig

Concentration:

1000 ug/ml

Source:

Mouse

Isotype:

IgG2a

Immunogen Catalog Number:

AG15393

GenBank Accession Number:

BC014785

GeneID (NCBI):

4072

UNIPROT ID:

P16422

Full Name:

epithelial cell adhesion molecule

Calculated MW:

314 aa, 35 kDa

Observed MW:

35-40 kDa

Purification Method:

Protein A purification

CloneNo.:

2A2D5

Recommended Dilutions:

WB: 1:2000-1:10000

IHC: 1:1000-1:4000

IF-P: 1:200-1:800

IF/ICC: 1:200-1:800

Applications

Tested Applications:

WB, IHC, IF/ICC, IF-P, ELISA

Cited Applications:

WB, IHC, IF

Species Specificity:

human

Cited Species:

human, mouse

Note-IHC: suggested antigen retrieval with TE buffer pH 9.0; (*) Alternatively, antigen retrieval may be performed with citrate buffer pH 6.0

Positive Controls:

WB: HaCaT cells, A431 cells, T-47D cells, MCF-7 cells

IHC: Human colon tissue, human breast cancer tissue

IF-P: human colon cancer tissue, human stomach cancer tissue

IF/ICC: MCF-7 cells, HT-29 cells

Background Information

Epithelial cell adhesion molecule (EpCAM, CD326) is a type I transmembrane glycoprotein that functions as a homophilic, epithelial-specific intercellular cell-adhesion molecule. In addition to cell adhesion, EpCAM is also involved in cellular signaling, cell migration, proliferation, and differentiation. EpCAM is highly expressed on most carcinomas and therefore of potential use as a diagnostic and prognostic marker for a variety of carcinomas, and has become a therapeutic target. EpCAM may occur in distinct forms due to glycosylation. (PMID: 20837599; 19249674; 21576002; 22647938; 12691820)

Notable Publications

Author	Pubmed ID	Journal	Application
Chunyuan Yang	32123160	Cell Death Dis	WB
Lei Wang	34218177	Biosens Bioelectron	
Yaxue Dai	35868149	Talanta	WB

Storage

Storage:

Store at -20°C. Stable for one year after shipment.

Storage Buffer:

PBS with 0.02% sodium azide and 50% glycerol, pH7.3

Aliquoting is unnecessary for -20°C storage

For technical support and original validation data for this product please contact:

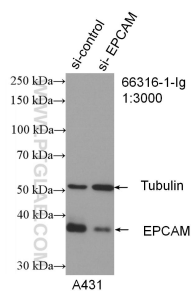
T: 4006900926

E: Proteintech-CN@ptglab.com

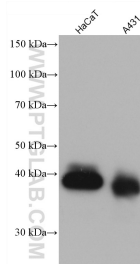
W: ptgcn.com

This product is exclusively available under Proteintech Group brand and is not available to purchase from any other manufacturer.

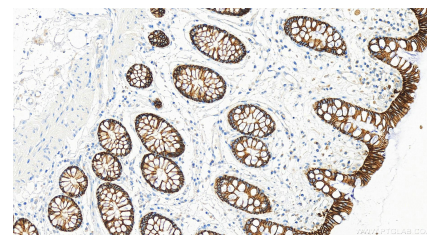
Selected Validation Data



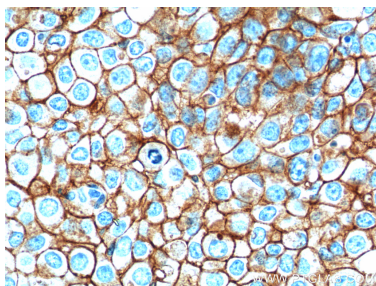
WB result of EPCAM antibody (66316-1-Ig; 1:3000; incubated at room temperature for 1.5 hours) with sh-Control and sh-EPCAM transfected A431 cells.



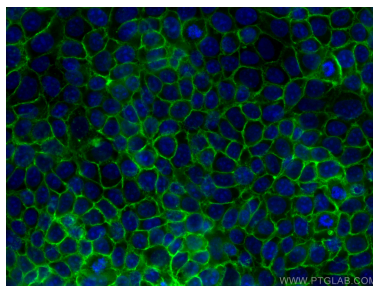
Various lysates were subjected to SDS PAGE followed by western blot with 66316-1-Ig (EPCAM antibody) at dilution of 1:5000 incubated at room temperature for 1.5 hours.



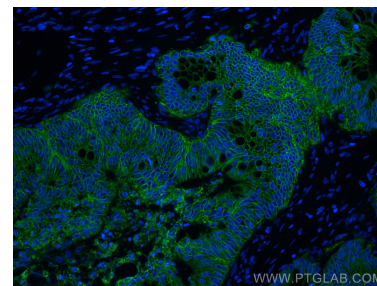
Immunohistochemical analysis of paraffin-embedded Human colon tissue slide using 66316-1-Ig (EPCAM/CD326 antibody) at dilution of 1:2000 (under 20x lens). Heat mediated antigen retrieval with Tris-EDTA buffer (pH 9.0).



Immunohistochemical analysis of paraffin-embedded human breast cancer tissue slide using 66316-1-Ig (EPCAM Antibody) at dilution of 1:500 (under 40x lens). Heat mediated antigen retrieval with Tris-EDTA buffer (pH 9.0).



Immunofluorescent analysis of (-20°C Methanol) fixed MCF-7 cells using EPCAM antibody (66316-1-Ig, Clone: 2A2D5) at dilution of 1:400 and CoraLite®488-Conjugated AffiniPure Goat Anti-Mouse IgG(H+L).



Immunofluorescent analysis of (4% PFA) fixed human colon cancer tissue using EPCAM/CD326 antibody (66316-1-Ig, Clone: 2A2D5) at dilution of 1:400 and CoraLite®488-Conjugated AffiniPure Goat Anti-Mouse IgG(H+L).