

For Research Use Only

Integrin Beta 1 Monoclonal antibody

Catalog Number: 66315-1-Ig **2 Publications**



Basic Information

Catalog Number: 66315-1-Ig	GenBank Accession Number: BC020057	Purification Method: Protein G purification
Concentration: 2300 µg/ml	GeneID (NCBI): 3688	CloneNo.: 1A7C9
Source: Mouse	ENSEMBL Gene ID: ENSG00000150093	Recommended Dilutions: WB 1:2000-1:16000
Isotype: IgG1	UNIPROT ID: P05556	
Immunogen Catalog Number: AG24476	Full Name: integrin, beta 1 (fibronectin receptor, beta polypeptide, antigen CD29 includes MDF2, MSK12)	
	Calculated MW: 88 kDa	
	Observed MW: 130 kDa	

Applications

Tested Applications: WB, ELISA	Positive Controls: WB : HT-1080 cells, HUVEC cells
Cited Applications: WB	
Species Specificity: human	
Cited Species: human, rat	

Background Information

Integrin beta-1 (ITGB1), also named as CD29, is a 130 kDa single chain type I glycoprotein that is expressed in a heterodimeric complex with one of six distinct α subunits, comprising the very late activation antigen (VLA) subfamily of adhesion receptors. It is one of the essential surface molecules expressed on human MSC from bone marrow and other sources. The β 1 subunit is also broadly expressed on lymphocytes and monocytes, weakly expressed on granulocytes, and not expressed on erythrocytes. These receptors are involved in a variety of cell-cell and cell-matrix interactions.

Notable Publications

Author	Pubmed ID	Journal	Application
Eun-Ah Cho	33275877	Structure	WB
Junxian Hu	39944489	Front Med (Lausanne)	WB

Storage

Storage:
Store at -20°C. Stable for one year after shipment.
Storage Buffer:
PBS with 0.02% sodium azide and 50% glycerol, pH7.3
Aliquoting is unnecessary for -20°C storage

For technical support and original validation data for this product please contact:

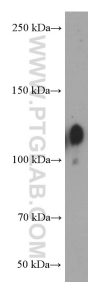
T: 4006900926

E: Proteintech-CN@ptglab.com

W: ptgcn.com

This product is exclusively available under Proteintech Group brand and is not available to purchase from any other manufacturer.

Selected Validation Data



HT-1080 cells were subjected to SDS PAGE followed by western blot with 66315-1-Ig (Integrin beta-1 Antibody) at dilution of 1:8000 incubated at room temperature for 1.5 hours.