

For Research Use Only

# S100A10 Monoclonal antibody

Catalog Number: 66227-1-Ig **2 Publications**



## Basic Information

Catalog Number: 66227-1-Ig	GenBank Accession Number: BC015973	Purification Method: Protein G purification
Concentration: 3100 µg/ml	GeneID (NCBI): 6281	CloneNo.: 1B3F9
Source: Mouse	UNIPROT ID: P60903	Recommended Dilutions: WB: 1:1000-1:4000 IHC: 1:50-1:500 IF/ICC: 1:200-1:800
Isotype: IgG1	Full Name: S100 calcium binding protein A10	
Immunogen Catalog Number: AG23596	Calculated MW: 11 kDa Observed MW: 11 kDa	

## Applications

Tested Applications: WB, IHC, IF/ICC, ELISA	Positive Controls: WB : human lung tissue, IHC : human colon cancer tissue, human cervical cancer tissue, human liver cancer tissue, human stomach cancer tissue, human pancreas cancer tissue IF/ICC : A431 cells, Saos-2 cells
Cited Applications: IF	
Species Specificity: human	
Cited Species: mouse	
<b>Note-IHC: suggested antigen retrieval with TE buffer pH 9.0; (*) Alternatively, antigen retrieval may be performed with citrate buffer pH 6.0</b>	

## Background Information

S100A10, also known as p11, is a member of the S100 family of small, EF hand containing dimeric proteins. S100 proteins are localized in the cytoplasm and/or nucleus of a wide range of cells, and involved in the regulation of a number of cellular processes such as cell cycle progression and differentiation. S100A10 is present on the surface of endothelial and other cells in a heterotetrameric complex with another Ca(2+)-binding protein, annexin II. S100A10 may function in exocytosis and endocytosis.

## Notable Publications

Author	Pubmed ID	Journal	Application
Min Sun	40271828	Adv Sci (Weinh)	IF
Mingyue Li	38580155	Exp Neurol	IF

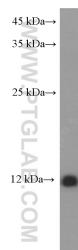
## Storage

Storage:  
Store at -20°C. Stable for one year after shipment.  
Storage Buffer:  
PBS with 0.02% sodium azide and 50% glycerol, pH7.3  
Aliquoting is unnecessary for -20°C storage

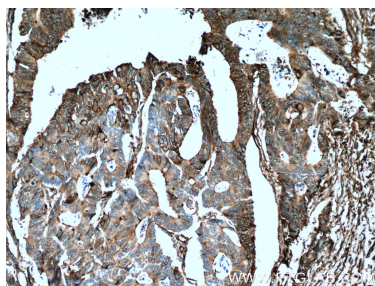
For technical support and original validation data for this product please contact:  
T: 4006900926 E: Proteintech-CN@ptglab.com W: ptgcn.com

This product is exclusively available under Proteintech Group brand and is not available to purchase from any other manufacturer.

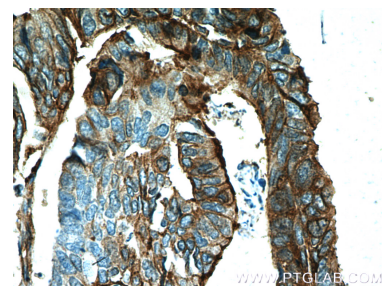
## Selected Validation Data



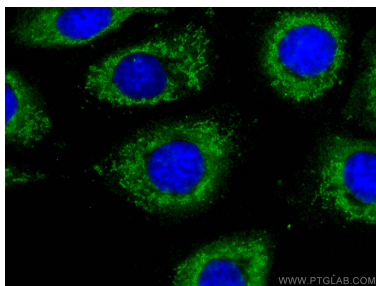
human lung tissue were subjected to SDS PAGE followed by western blot with 66227-1-Ig (S100A10 Antibody) at dilution of 1:2000 incubated at room temperature for 1.5 hours.



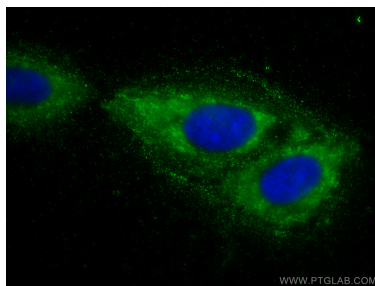
Immunohistochemical analysis of paraffin-embedded human colon cancer tissue slide using 66227-1-Ig (S100A10 Antibody) at dilution of 1:200 (under 10x lens). Heat mediated antigen retrieval with Tris-EDTA buffer (pH 9.0).



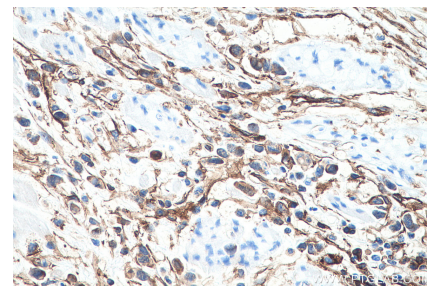
Immunohistochemical analysis of paraffin-embedded human colon cancer tissue slide using 66227-1-Ig (S100A10 Antibody) at dilution of 1:200 (under 40x lens). Heat mediated antigen retrieval with Tris-EDTA buffer (pH 9.0).



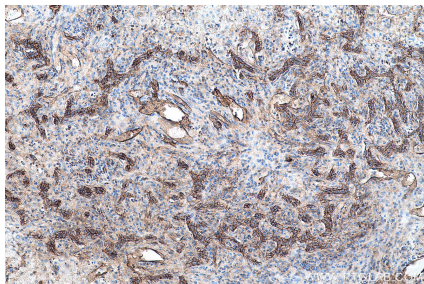
Immunofluorescent analysis of (4% PFA) fixed A431 cells using S100A10 antibody (66227-1-Ig, Clone: 1B3F9) at dilution of 1:400 and CoraLite®488-Conjugated Goat Anti-Mouse IgG(H+L).



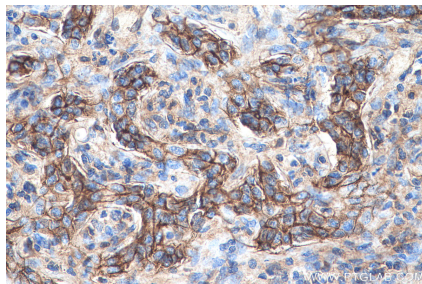
Immunofluorescent analysis of (-20°C Methanol) fixed Saos-2 cells using S100A10 antibody (66227-1-Ig, Clone: 1B3F9) at dilution of 1:800 and CoraLite®488-Conjugated Goat Anti-Mouse IgG(H+L).



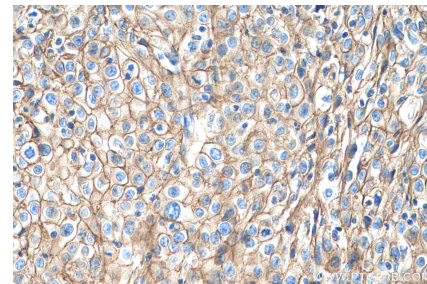
Immunohistochemical analysis of paraffin-embedded human stomach cancer tissue slide using 66227-1-Ig (S100A10 antibody) at dilution of 1:4000 (under 40x lens). Heat mediated antigen retrieval with Tris-EDTA buffer (pH 9.0).



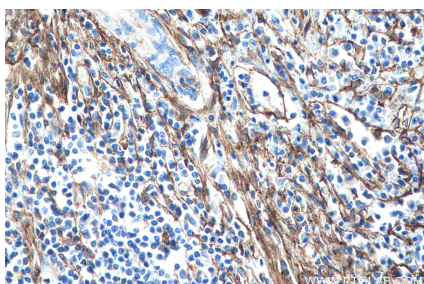
Immunohistochemical analysis of paraffin-embedded human liver cancer tissue slide using 66227-1-Ig (S100A10 antibody) at dilution of 1:4000 (under 10x lens). Heat mediated antigen retrieval with Tris-EDTA buffer (pH 9.0).



Immunohistochemical analysis of paraffin-embedded human liver cancer tissue slide using 66227-1-Ig (S100A10 antibody) at dilution of 1:4000 (under 40x lens). Heat mediated antigen retrieval with Tris-EDTA buffer (pH 9.0).



Immunohistochemical analysis of paraffin-embedded human cervical cancer tissue slide using 66227-1-Ig (S100A10 antibody) at dilution of 1:4000 (under 40x lens). Heat mediated antigen retrieval with Tris-EDTA buffer (pH 9.0).



Immunohistochemical analysis of paraffin-embedded human cervical cancer tissue slide using 66227-1-Ig (S100A10 antibody) at dilution of 1:4000 (under 40x lens). Heat mediated antigen retrieval with Tris-EDTA buffer (pH 9.0).