

For Research Use Only

Cytokeratin 18 Monoclonal antibody, PBS Only (Detector)

Catalog Number: 66187-1-PBS

Featured Product



Basic Information

Catalog Number:

66187-1-PBS

Concentration:

1000 ug/ml

Source:

Mouse

Isotype:

IgG1

Immunogen Catalog Number:

AG1260

GenBank Accession Number:

BC000180

GeneID (NCBI):

3875

UNIPROT ID:

P05783

Full Name:

keratin 18

Calculated MW:

48 kDa

Observed MW:

48 kDa

Purification Method:

Protein G purification

CloneNo.:

1G11C4

Applications

Tested Applications:

WB, IHC, IF/ICC, IF-P, FC (Intra), Cytometric bead array, Indirect ELISA

Species Specificity:

human, mouse, rat, pig

Background Information

Keratins are a large family of proteins that form the intermediate filament cytoskeleton of epithelial cells, which are classified into two major sequence types. Type I keratins are a group of acidic intermediate filament proteins, including K9-K23, and the hair keratins Ha1-Ha8. Type II keratins are the basic or neutral counterparts to the acidic type I keratins, including K1-K8, and the hair keratins, Hb1-Hb6. KRT18, also named as CYK18, PIG46 and K18, is the most commonly found members of the intermediate filament gene family. KRT18 is a type I keratin which is found primarily in non squamous epithelia and is present in a majority of adenocarcinomas and ductal carcinomas but not in squamous cell carcinomas.

Storage

Storage:

Store at -80°C.

The product is shipped with ice packs. Upon receipt, store it immediately at -80°C

Storage Buffer:

PBS only, pH7.3

For technical support and original validation data for this product please contact:

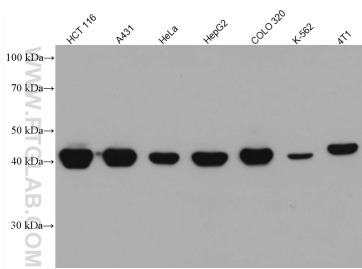
T: 4006900926

E: Proteintech-CN@ptglab.com

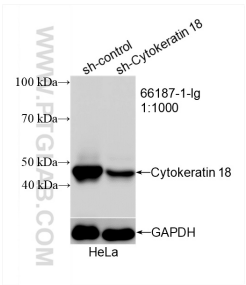
W: ptgcn.com

This product is exclusively available under Proteintech Group brand and is not available to purchase from any other manufacturer.

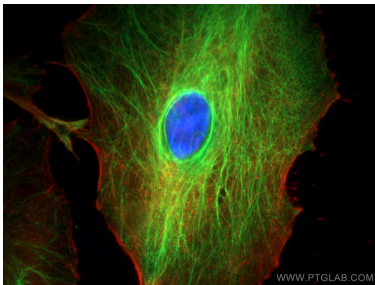
Selected Validation Data



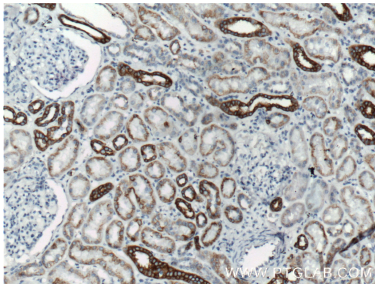
Various lysates were subjected to SDS PAGE followed by western blot with 66187-1-Ig (Cytokeratin 18 antibody) at dilution of 1:100000 incubated at room temperature for 1.5 hours. This data was developed using the same antibody clone with 66187-1-PBS in a different storage buffer formulation.



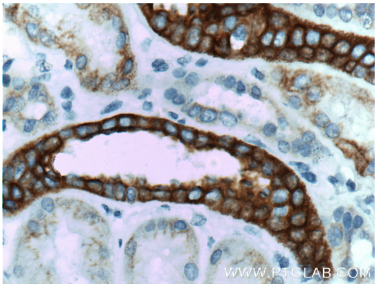
WB result of Cytokeratin 18 antibody (66187-1-Ig; 1:1000; incubated at room temperature for 1.5 hours) with sh-Control and sh-Cytokeratin 18 transfected HeLa cells. This data was developed using the same antibody clone with 66187-1-PBS in a different storage buffer formulation.



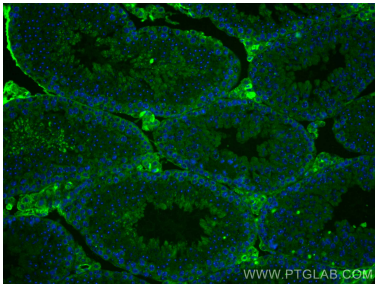
Immunofluorescent analysis of (4% PFA) fixed A549 cells using Cytokeratin 18 antibody (66187-1-Ig, Clone: 1G11C4) at dilution of 1:400 and CoraLite®488-Conjugated AffiniPure Goat Anti-Mouse IgG(H+L), CL594-Phalloidin (red). This data was developed using the same antibody clone with 66187-1-PBS in a different storage buffer formulation.



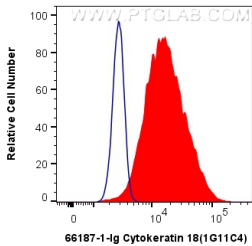
Immunohistochemical analysis of paraffin-embedded human kidney tissue slide using 66187-1-Ig (Cytokeratin 18 antibody at dilution of 1:1200 (under 10x lens). Heat mediated antigen retrieved with Citric acid buffer, pH6.0. This data was developed using the same antibody clone with 66187-1-PBS in a different storage buffer formulation.



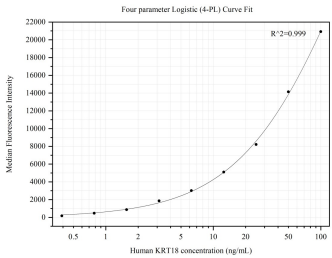
Immunohistochemical analysis of paraffin-embedded human kidney tissue slide using 66187-1-Ig (Cytokeratin 18 antibody at dilution of 1:1200 (under 40x lens). Heat mediated antigen retrieved with Citric acid buffer, pH6.0. This data was developed using the same antibody clone with 66187-1-PBS in a different storage buffer formulation.



Immunofluorescent analysis of (4% PFA) fixed mouse testis tissue using Cytokeratin 18 antibody (66187-1-Ig, Clone: 1G11C4) at dilution of 1:400 and CoraLite®488-Conjugated AffiniPure Goat Anti-Mouse IgG(H+L). This data was developed using the same antibody clone with 66187-1-PBS in a different storage buffer formulation.



1X10⁶ HeLa cells were intracellularly stained with 0.4 ug Anti-Human Cytokeratin 18 (66187-1-Ig, Clone:1G11C4) and CoraLite®488-Conjugated AffiniPure Goat Anti-Mouse IgG(H+L) at dilution 1:1000 (red), or 0.4 ug Mouse IgG1 Isotype Control (MOPC-21) (65124-1-Ig, Clone: MOPC-21) (blue). Cells were fixed with 4% PFA and permeabilized with Flow Cytometry Perm Buffer (PF00011-C). This data was developed using the same antibody clone with 66187-1-PBS in a



Cytometric bead array standard curve of MP50238-1, KRT18 Monoclonal Matched Antibody Pair, PBS Only. Capture antibody: 66187-2-PBS. Detection antibody: 66187-1-PBS. Standard:Ag1260. Range: 0.391-100 ng/mL.