

# CD22 Monoclonal antibody, PBS Only (Capture)

Catalog Number: 66103-1-PBS

## Basic Information

|                           |             |                           |                |                      |                        |
|---------------------------|-------------|---------------------------|----------------|----------------------|------------------------|
| Catalog Number:           | 66103-1-PBS | GenBank Accession Number: | BC109306       | Purification Method: | Protein A purification |
| Concentration:            | 1mg/ml      | GeneID (NCBI):            | 933            | CloneNo.:            | 7A2F1                  |
| Source:                   | Mouse       | UNIPROT ID:               | P20273         |                      |                        |
| Isotype:                  | IgG2a       | Full Name:                | CD22 molecule  |                      |                        |
| Immunogen Catalog Number: | AG17986     | Calculated MW:            | 847 aa, 95 kDa |                      |                        |
|                           |             | Observed MW:              | 135 kDa        |                      |                        |

## Applications

**Tested Applications:**  
WB, IHC, IF/ICC, IF-P, Cytometric bead array, Indirect ELISA

**Species Specificity:**  
human

## Background Information

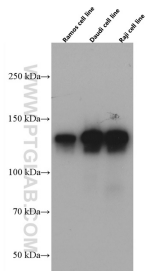
CD22, also known as Siglec-2 (sialic acid binding Ig-like lectin 2) or BL-CAM (B-lymphocyte cell adhesion molecule), is a 130-140 kDa, B-cell restricted, type I transmembrane glycoprotein belonging to the immunoglobulin gene superfamily. The expression of CD22 is developmentally regulated. It is expressed at low levels in the cytoplasm of pro-B and pre-B cells and present on the cell surface only at mature stages of B-cell differentiation. Cell surface expression is lost during terminal differentiation into plasma cell and after B-cell activation. CD22 is an inhibitory receptor for B-cell receptor (BCR) signalling, preferentially binds to alpha-2,6-linked sialic acid and mediates B-cell B-cell interactions. It plays a crucial role in activation and differentiation of the B-cell.

## Storage

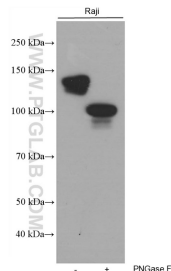
**Storage:**  
Store at -80°C.  
**The product is shipped with ice packs. Upon receipt, store it immediately at -80°C**

**Storage Buffer:**  
PBS only, pH7.3

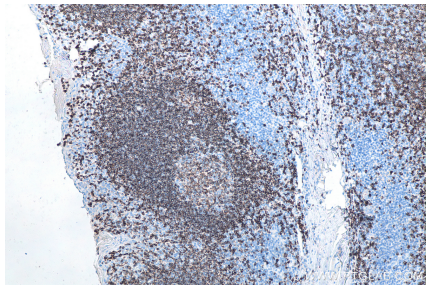
Selected Validation Data



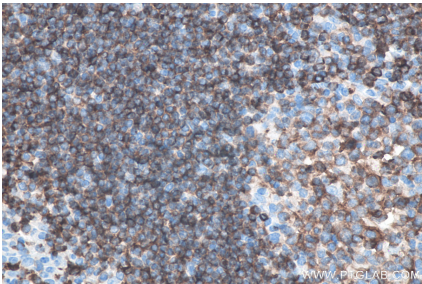
Ramos, Daudi, and Raji cells were subjected to SDS PAGE followed by western blot with 66103-1-Ig (CD22 antibody) at dilution of 1:5000 incubated at room temperature for 1.5 hours. This data was developed using the same antibody clone with 66103-1-PBS in a different storage buffer formulation.



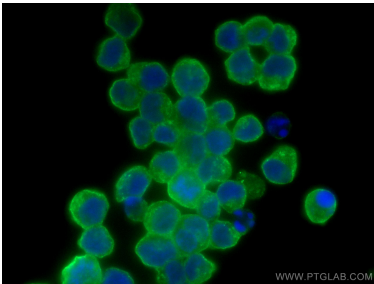
Untreated and PNGase F-treated lysates of Raji cells were subjected to SDS PAGE followed by western blot with 66103-1-Ig (CD22 antibody) at dilution of 1:20000 incubated at room temperature for 1.5 hours. PNGase F was obtained from Atagenix (cat.NO. ata808). This data was developed using the same antibody clone with 66103-1-PBS in a different storage buffer formulation.



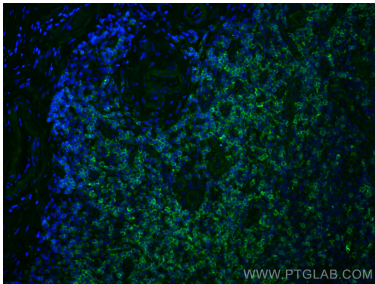
Immunohistochemical analysis of paraffin-embedded human tonsillitis tissue slide using 66103-1-Ig (CD22 antibody) at dilution of 1:20000 (under 10x lens). Heat mediated antigen retrieval with Tris-EDTA buffer (pH 9.0). This data was developed using the same antibody clone with 66103-1-PBS in a different storage buffer formulation.



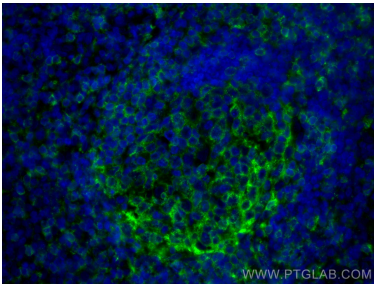
Immunohistochemical analysis of paraffin-embedded human tonsillitis tissue slide using 66103-1-Ig (CD22 antibody) at dilution of 1:20000 (under 40x lens). Heat mediated antigen retrieval with Tris-EDTA buffer (pH 9.0). This data was developed using the same antibody clone with 66103-1-PBS in a different storage buffer formulation.



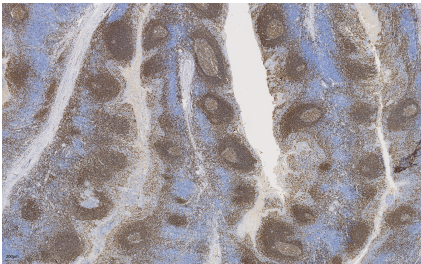
Immunofluorescent analysis of (4% PFA) fixed Raji cells using CD22 antibody (66103-1-Ig, Clone: 7A2F1) at dilution of 1:800 and CoraLite®488-Conjugated AffiniPure Goat Anti-Mouse IgG(H+L). This data was developed using the same antibody clone with 66103-1-PBS in a different storage buffer formulation.



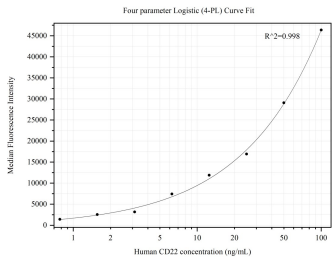
Immunofluorescent analysis of (4% PFA) fixed human tonsillitis tissue using CD22 antibody (66103-1-Ig, Clone: 7A2F1) at dilution of 1:400 and CoraLite®488-Conjugated AffiniPure Goat Anti-Mouse IgG(H+L). This data was developed using the same antibody clone with 66103-1-PBS in a different storage buffer formulation.



Immunofluorescent analysis of (4% PFA) fixed human tonsillitis tissue using CD22 antibody (66103-1-Ig, Clone: 7A2F1) at dilution of 1:400 and CoraLite®488-Conjugated AffiniPure Goat Anti-Mouse IgG(H+L). This data was developed using the same antibody clone with 66103-1-PBS in a different storage buffer formulation.



Immunohistochemical analysis of paraffin-embedded human tonsillitis tissue slide using 66103-1-Ig (CD22 antibody) at dilution of 1:20000 (under 4x lens). Heat mediated antigen retrieval with Tris-EDTA buffer (pH 9.0). This data was developed using the same antibody clone with 66103-1-PBS in a different storage buffer formulation.



Cytometric bead array standard curve of MP50311-4, CD22 Monoclonal Matched Antibody Pair, PBS Only. Capture antibody: 66103-1-PBS. Detection antibody: 66103-6-PBS. Standard:Ag17986. Range: 0.781-100 ng/mL