

For Research Use Only

Factor XII Monoclonal antibody

Catalog Number: 66089-1-Ig **2 Publications**



Basic Information

Catalog Number: 66089-1-Ig	GenBank Accession Number: BC012390	Purification Method: Protein A purification
Concentration: 2600 ug/ml	GeneID (NCBI): 2161	CloneNo.: 2E2F11
Source: Mouse	UNIPROT ID: P00748	Recommended Dilutions: WB: 1:500-1:2000 IHC: 1:50-1:500 IF-P: 1:200-1:800 IF/ICC: 1:500-1:2000
Isotype: IgG2b	Full Name: coagulation factor XII (Hageman factor)	
Immunogen Catalog Number: AG3401	Calculated MW: 615 aa, 68 kDa	
	Observed MW: 28 kDa	

Applications

Tested Applications: WB, IHC, IF/ICC, IF-P, ELISA	Positive Controls: WB : K562 cells, K-562 cells IHC : human liver tissue, human kidney tissue IF-P : mouse liver tissue, IF/ICC : HepG2 cells,
Cited Applications: WB, IHC	
Species Specificity: human, mouse	
Cited Species: human, mouse	
Note-IHC: suggested antigen retrieval with TE buffer pH 9.0; (*) Alternatively, antigen retrieval may be performed with citrate buffer pH 6.0	

Background Information

Factor XII (F XII, Hageman factor) is a 80 kDa, single chain glycoprotein that circulates in blood as an inactive zymogen. F XII plays an important role in blood coagulation, fibrinolysis, and kinin generation. Factor XII is activated by kallikrein in alpha-factor XIIa, which is further converted by trypsin into beta-factor XIIa. Alpha-factor XIIa is composed of a 52 kDa NH2-terminal heavy chain, called coagulation factor XIIa heavy chain, and a 28 kDa COOH-terminal light chain, called coagulation factor XIIa light chain, connected by a disulfide bond. Beta-factor XIIa is composed of 2 chains linked by a disulfide bond, an N-terminal nonapeptide, called beta-factor XIIa part 1, and coagulation factor XIIa light chain, also known in this context as beta-factor XIIa part 2.

Notable Publications

Author	Pubmed ID	Journal	Application
Fanfan Li	30959404	Mol Ther Nucleic Acids	WB
Yuanping Hai	40398921	J Clin Endocrinol Metab	IHC

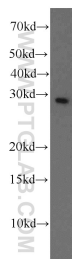
Storage

Storage:
Store at -20°C. Stable for one year after shipment.
Storage Buffer:
PBS with 0.02% sodium azide and 50% glycerol, pH7.3
Aliquoting is unnecessary for -20°C storage

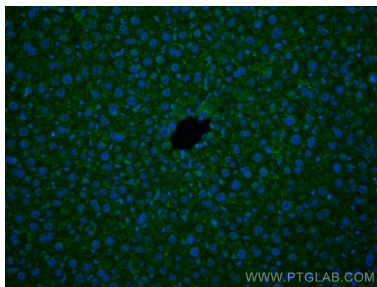
For technical support and original validation data for this product please contact:
T: 4006900926 E: Proteintech-CN@ptglab.com W: ptgcn.com

This product is exclusively available under Proteintech Group brand and is not available to purchase from any other manufacturer.

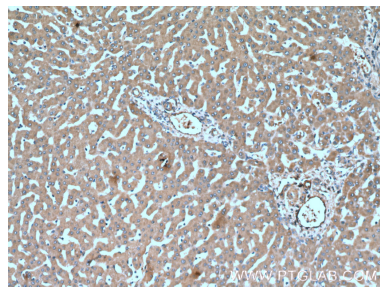
Selected Validation Data



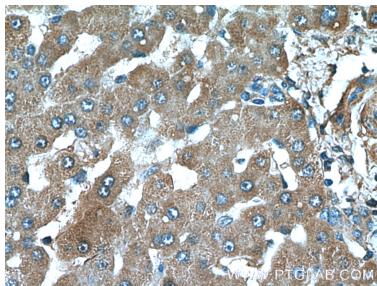
K-562 cells were subjected to SDS PAGE followed by western blot with 66089-1-Ig (Factor XII antibody) at dilution of 1:1000 incubated at room temperature for 1.5 hours.



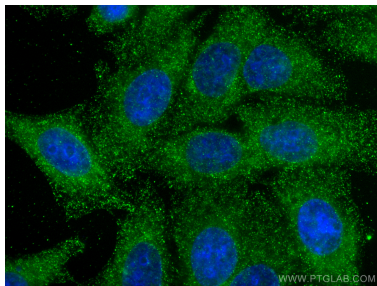
Immunofluorescent analysis of (4% PFA) fixed mouse liver tissue using Factor XII antibody (66089-1-Ig, Clone: 2E2F11) at dilution of 1:400 and CoraLite®488-Conjugated AffiniPure Goat Anti-Mouse IgG(H+L).



Immunohistochemical analysis of paraffin-embedded human liver tissue slide using 66089-1-Ig (Factor XII antibody at dilution of 1:200 (under 10x lens).



Immunohistochemical analysis of paraffin-embedded human liver tissue slide using 66089-1-Ig (Factor XII antibody at dilution of 1:200 (under 40x lens).



Immunofluorescent analysis of (-20°C Ethanol) fixed HepG2 cells using Factor XII antibody (66089-1-Ig, Clone: 2E2F11) at dilution of 1:1000 and CoraLite®488-Conjugated AffiniPure Goat Anti-Mouse IgG(H+L).