

For Research Use Only

Albumin Monoclonal antibody, PBS Only (Detector)

Catalog Number: 66051-1-PBS



Basic Information

Catalog Number:	66051-1-PBS	GenBank Accession Number:	BC034023	Purification Method:	Protein G purification
Concentration:	1mg/ml	GeneID (NCBI):	213	CloneNo.:	4A1C11
Source:	Mouse	UNIPROT ID:	P02768		
Isotype:	IgG1	Full Name:	albumin		
Immunogen Catalog Number:	AG9885	Calculated MW:	609 aa, 69 kDa		
		Observed MW:	66 kDa		

Applications

Tested Applications:
WB, IHC, IF/ICC, IF-P, Sandwich ELISA, Indirect ELISA, Sample test

Species Specificity:
human, rat, pig

Background Information

Albumin is the most abundant protein in blood plasma. Alterations of level of serum albumin are linked to variety of diseases. Albumin is expressed exclusively by well-differentiated hepatocytes, thus anti-albumin has been used to mark hepatocytes. (21388516, 23832071) In addition, glycosylated serum albumin is also a potential diabetes biomarker.

Storage

Storage:
Store at -80°C.

The product is shipped with ice packs. Upon receipt, store it immediately at -80°C

Storage Buffer:
PBS only, pH7.3

For technical support and original validation data for this product please contact:

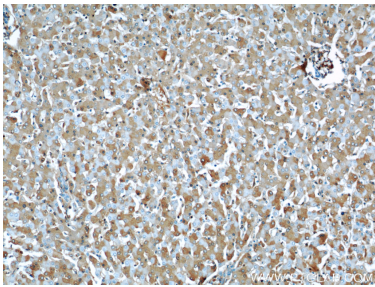
T: 4006900926

E: Proteintech-CN@ptglab.com

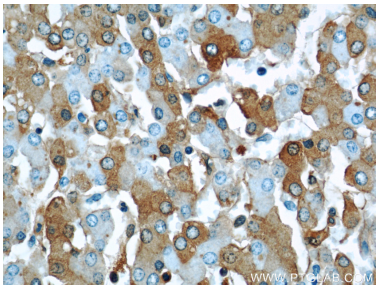
W: ptgcn.com

This product is exclusively available under Proteintech Group brand and is not available to purchase from any other manufacturer.

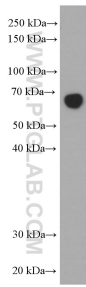
Selected Validation Data



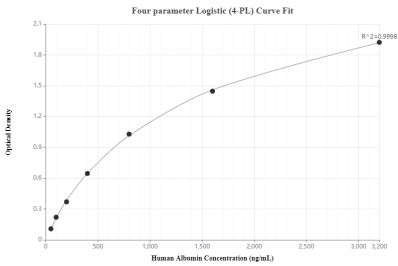
Immunohistochemical analysis of paraffin-embedded human liver using 66051-1-Ig(ALB antibody) at dilution of 1:50 (under 10x lens). This data was developed using the same antibody clone with 66051-1-PBS in a different storage buffer formulation.



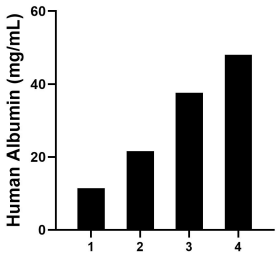
Immunohistochemical analysis of paraffin-embedded human liver using 66051-1-Ig(ALB antibody) at dilution of 1:50 (under 40x lens). This data was developed using the same antibody clone with 66051-1-PBS in a different storage buffer formulation.



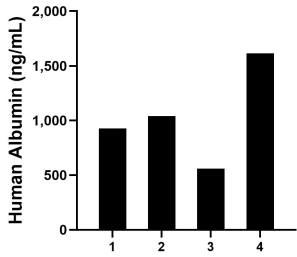
human plasma (diluted 5000 fold) was subjected to SDS PAGE followed by western blot with 66051-1-Ig (Albumin Antibody) at dilution of 1:10000 incubated at room temperature for 1.5 hours. This data was developed using the same antibody clone with 66051-1-PBS in a different storage buffer formulation.



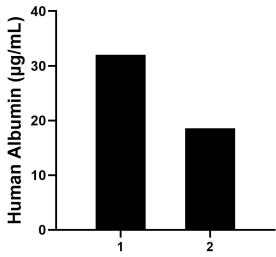
Sandwich ELISA standard curve of MP50031-1, Albumin Monoclonal Matched Antibody Pair, PBS Only. Capture antibody: 66051-2-PBS. Detection antibody: 66051-1-PBS. Standard: Ag9885. Range: 50-3200 ng/mL



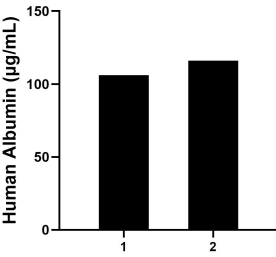
Serum of four individual healthy human donors was measured. The Albumin concentration of detected samples was determined to be 29.65 mg/mL with a range of 11.40-48.00 mg/mL



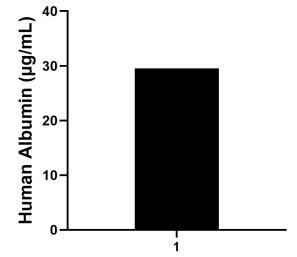
Urine of four individual healthy human donors was measured. The Albumin concentration of detected samples was determined to be 1,036.00 ng/mL with a range of 560.00-1,616.00 ng/mL



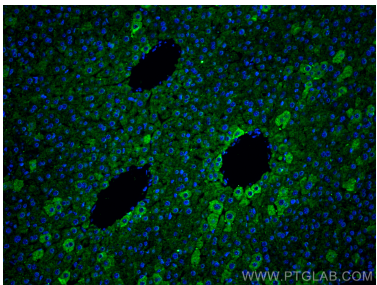
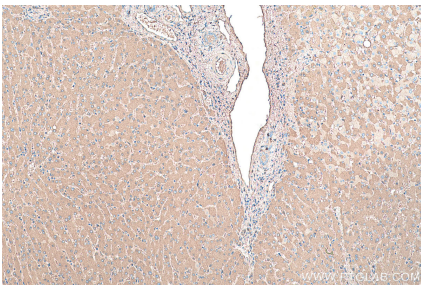
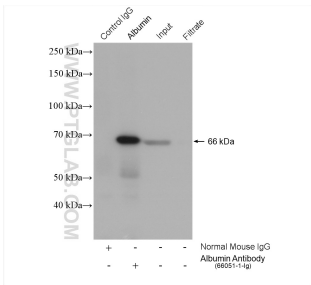
Saliva of two individual healthy human donors was measured. The Albumin concentrations of detected samples were determined to be 32.00 µg/mL and 18.60 µg/mL, respectively.



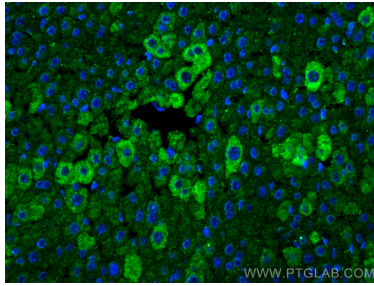
Human milk of two individual healthy human donors was measured. The Albumin concentrations of detected samples were determined to be 106.00 µg/mL and 116.00 µg/mL, respectively.



Human cerebrospinal fluid (CSF) of one individual human donors was measured. The Albumin concentration of detected samples was determined to be 29.50 µg/mL

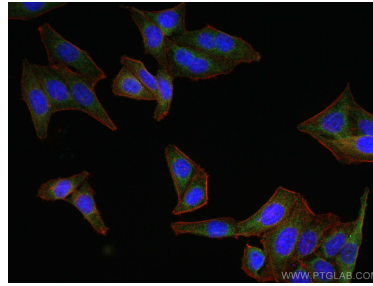


IP result of anti-Albumin (IP:66051-1-Ig, 4ug; Detection:66051-1-Ig 1:1000) with HepG2 cells lysate 1720 ug. This data was developed using the same antibody clone with 66051-1-PBS in a different storage buffer formulation.



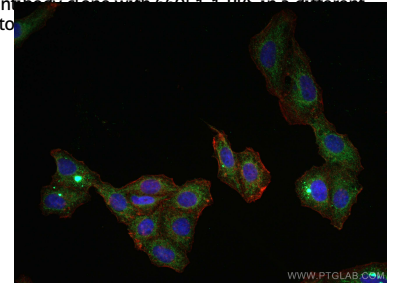
Immunofluorescent analysis of (4% PFA) fixed paraffin-embedded mouse liver tissue using Albumin antibody (66051-1-Ig, Clone: 4A1C11) at dilution of 1:400 and CoraLite®488-Conjugated Goat Anti-Mouse IgG(H+L) (SA00013-1). Heat mediated antigen retrieval with Tris-EDTA buffer (pH 9.0). This data was developed using the same antibody clone with 66051-1-PBS in a different storage buffer formulation.

Immunohistochemical analysis of paraffin-embedded human liver tissue slide using 66051-1-Ig (Albumin antibody) at dilution of 1:64000 (under 10x lens). Heat mediated antigen retrieval with Tris-EDTA buffer (pH 9.0). This data was developed using the same antibody clone with 66051-1-PBS in a different storage buffer formulation.

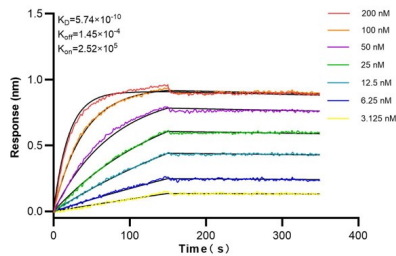


Immunofluorescent analysis of (4% PFA) fixed HepG2 cells using Albumin antibody (66051-1-Ig, Clone: 4A1C11) at dilution of 1:400 and CoraLite®488-Conjugated AffiniPure Goat Anti-Mouse IgG(H+L), CL594-Phalloidin (red). This data was developed using the same antibody clone with 66051-1-PBS in a different storage buffer formulation.

Immunofluorescent analysis of (4% PFA) fixed paraffin-embedded mouse liver tissue using Albumin antibody (66051-1-Ig, Clone: 4A1C11) at dilution of 1:400 and CoraLite®488-Conjugated Goat Anti-Mouse IgG(H+L) (SA00013-1). Heat mediated antigen retrieval with Tris-EDTA buffer (pH 9.0). This data was developed using the same antibody clone with 66051-1-PBS in a different storage buffer formulation.



Immunofluorescent analysis of (4% PFA) fixed HepG2 cells using Albumin antibody (66051-1-Ig, Clone: 4A1C11) at dilution of 1:400 and CoraLite®488-Conjugated AffiniPure Goat Anti-Mouse IgG(H+L), CL594-Phalloidin (red). This data was developed using the same antibody clone with 66051-1-PBS in a different storage buffer formulation.



Biolayer interferometry (BLI) kinetic assays of 66051-1-Ig against Human Albumin were performed. The affinity constant is 0.574 nM