

For Research Use Only

# Alpha Tubulin Monoclonal antibody, PBS Only

Catalog Number: 66031-1-PBS

Featured Product



## Basic Information

Catalog Number:

66031-1-PBS

Concentration:

1 mg/ml

Source:

Mouse

Isotype:

IgG2b

Immunogen Catalog Number:

AG18034

GenBank Accession Number:

BC009314

GeneID (NCBI):

10376

UNIPROT ID:

P68363

Full Name:

tubulin, alpha 1b

Calculated MW:

50 kDa

Observed MW:

50-55 kDa

Purification Method:

Protein A purification

CloneNo.:

1E4C11

## Applications

Tested Applications:

WB, IHC, IF/ICC, FC (Intra), IP, ELISA

Species Specificity:

human, mouse, rat, canine

## Background Information

There are five tubulins in human cells: alpha, beta, gamma, delta, and epsilon. Tubulins are conserved across species. They form heterodimers, which multimerize to form a microtubule filament. An alpha and beta tubulin heterodimer is the basic structural unit of microtubules. The heterodimer does not come apart once formed. The alpha and beta tubulins, which are each about 55 kDa MW, are homologous but not identical. Alpha tubulin is useful for scientists across fields as an internal control due to its high, ubiquitous expression pattern. Tubulin expression may vary according to resistance to antimicrobial and antimitotic drugs. This antibody specifically recognizes Tubulin Alpha.

## Storage

Storage:

Store at -80°C.

The product is shipped with ice packs. Upon receipt, store it immediately at -80°C

Storage Buffer:

PBS only, pH7.3

For technical support and original validation data for this product please contact:

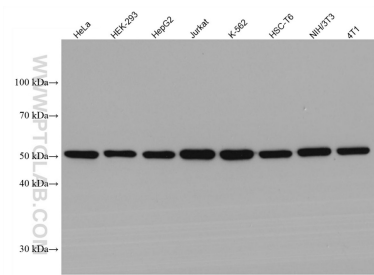
T: 4006900926

E: [Proteintech-CN@ptglab.com](mailto:Proteintech-CN@ptglab.com)

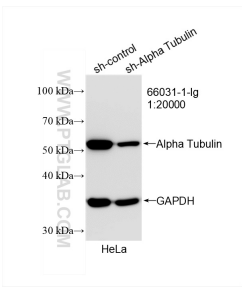
W: [ptgcn.com](http://ptgcn.com)

This product is exclusively available under Proteintech Group brand and is not available to purchase from any other manufacturer.

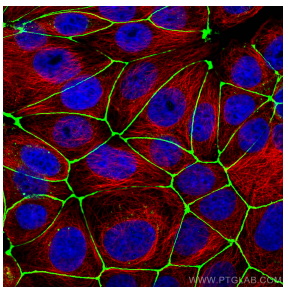
Selected Validation Data



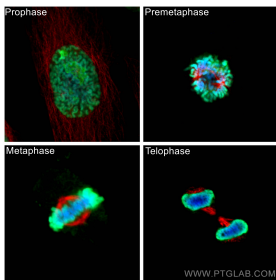
Various lysates were subjected to SDS PAGE followed by western blot with 66031-1-Ig (Alpha Tubulin antibody) at dilution of 1:200000 incubated at room temperature for 1.5 hours. This data was developed using the same antibody clone with 66031-1-PBS in a different storage buffer formulation.



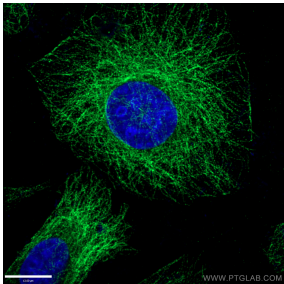
WB result of Alpha Tubulin antibody (66031-1-Ig; 1:20000; incubated at room temperature for 1.5 hours) with sh-Control and sh-Alpha Tubulin transfected HeLa cells. This data was developed using the same antibody clone with 66031-1-PBS in a different storage buffer formulation.



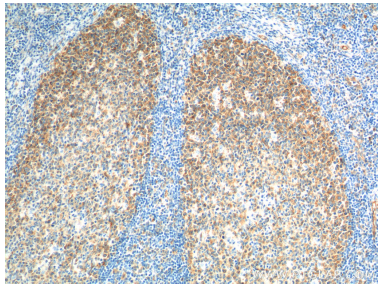
Immunofluorescent analysis of (4% PFA) fixed MCF-7 cells using Alpha Tubulin antibody (66031-1-Ig, Clone: 1E4C11 ) at dilution of 1:1000 and CoraLite®594-Conjugated AffiniPure Goat Anti-Rabbit IgG(H+L), ZO-1 antibody (21773-1-AP, green). This data was developed using the same antibody clone with 66031-1-PBS in a different storage buffer formulation.



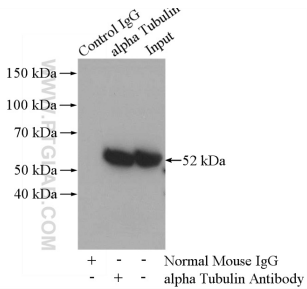
Immunofluorescent analysis of (4% PFA) fixed HeLa cells using Alpha Tubulin antibody (66031-1-Ig, Clone: 1E4C11 ) at dilution of 1:1000 and CoraLite®594-Conjugated AffiniPure Goat Anti-Mouse IgG(H+L), Histone H1.2 antibody (19649-1-AP, green). This data was developed using the same antibody clone with 66031-1-PBS in a different storage buffer formulation.



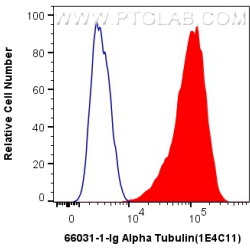
Immunofluorescent analysis of (-20°C Ethanol ) fixed HepG2 cells using 66031-1-Ig(alpha Tubulin antibody) at dilution of 1:100 and Alexa Fluor 488-conjugated AffiniPure Goat Anti-Mouse IgG(H+L). This data was developed using the same antibody clone with 66031-1-PBS in a different storage buffer formulation.



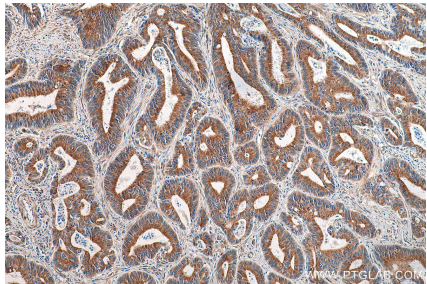
Immunohistochemical analysis of paraffin-embedded human tonsillitis tissue slide using 66031-1-Ig (alpha Tubulin antibody) at dilution of 1:200 (under 10x lens). Heat mediated antigen retrieval with Tris-EDTA buffer (pH 9.0). This data was developed using the same antibody clone with 66031-1-PBS in a different storage buffer formulation.



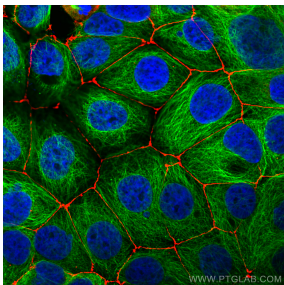
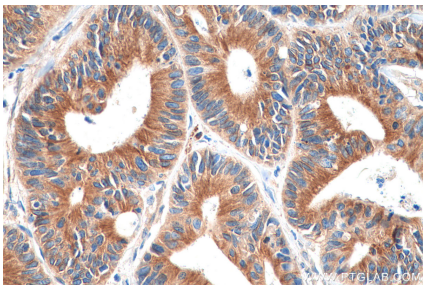
IP result of anti-Alpha Tubulin (IP:66031-1-Ig, 5ug; Detection:11224-1-AP 1:1000) with HeLa cells lysate 2800ug. This data was developed using the same antibody clone with 66031-1-PBS in a different storage buffer formulation.



1X10<sup>6</sup> HeLa cells were intracellularly stained with 0.4 ug Anti-Human Alpha Tubulin (66031-1-Ig, Clone:1E4C11) and CoraLite®488-Conjugated AffiniPure Goat Anti-Mouse IgG(H+L) at dilution 1:1000 (red), or 0.4 ug Mouse IgG2b Isotype Control (MPC-11) (65128-1-Ig, Clone: MPC-11) (blue). Cells were fixed with 4% PFA and permeabilized with Flow Cytometry Perm Buffer (PF00011-C). This data was developed using the same antibody clone with 66031-1-PBS in a



Immunohistochemical analysis of paraffin-embedded human colon cancer tissue slide using 66031-1-Ig (Alpha Tubulin antibody) at dilution of 1:1000 (under 10x lens). Heat mediated antigen retrieval with Tris-EDTA buffer (pH 9.0). This data was developed using the same antibody clone with 66031-1-PBS in a different storage buffer formulation.



Immunohistochemical analysis of paraffin-embedded human colon cancer tissue slide using 66031-1-Ig (Alpha Tubulin antibody) at dilution of 1:1000 (under 40x lens). Heat mediated antigen retrieval with Tris-EDTA buffer (pH 9.0). This data was developed using the same antibody clone with 66031-1-PBS in a different storage buffer formulation.

Immunofluorescent analysis of (4% PFA) fixed MCF-7 cells using Alpha Tubulin antibody (66031-1-Ig, Clone: 1E4C11 ) at dilution of 1:1000 and CoraLite®488-Conjugated AffiniPure Goat Anti-Mouse IgG(H+L), ZO-1 antibody (21773-1-AP, red). This data was developed using the same antibody clone with 66031-1-PBS in a different storage buffer formulation.