

For Research Use Only

# BCL2L1 Monoclonal antibody, PBS Only (Detector)

Catalog Number: 66020-1-PBS



## Basic Information

Catalog Number:	GenBank Accession Number:	Purification Method:
66020-1-PBS	BC019307	Protein A purification
Concentration:	GeneID (NCBI):	CloneNo.:
1mg/ml	598	4C12A6
Source:	UNIPROT ID:	
Mouse	Q07817	
Isotype:	Full Name:	
IgG2b	BCL2-like 1	
Immunogen Catalog Number:	Calculated MW:	
AG18037	26 kDa	
	Observed MW:	
	30 kDa	

## Applications

**Tested Applications:**  
WB, IHC, IF/ICC, FC (Intra), Cytometric bead array, Indirect ELISA

**Species Specificity:**  
human, mouse, rat

## Background Information

BCL2L1 is a member of the BCL-2 protein family. BCL2L1 is expressed as three isoforms, Bcl-X(L), Bcl-X(s) and Bcl-X(beta), and is located at the outer mitochondrial membrane. The Bcl-XL isoform is a 233 amino acid protein, acting as an apoptotic inhibitor. Bcl-XL can form heterodimers with BAX, BAK or BCL2, and the heterodimerization with BAX does not seem to be required for anti-apoptotic activity. The Bcl-XS isoform is a shorter variant that is 178 amino acids in length and lacks a 63 amino acid region (amino acids 126-188), acting as an apoptotic activator.

## Storage

**Storage:**  
Store at -80°C.  
**The product is shipped with ice packs. Upon receipt, store it immediately at -80°C**

**Storage Buffer:**  
PBS only, pH7.3

For technical support and original validation data for this product please contact:

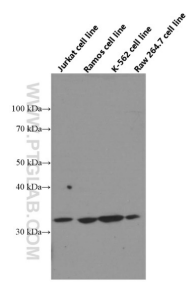
T: 4006900926

E: [Proteintech-CN@ptglab.com](mailto:Proteintech-CN@ptglab.com)

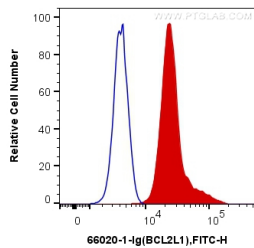
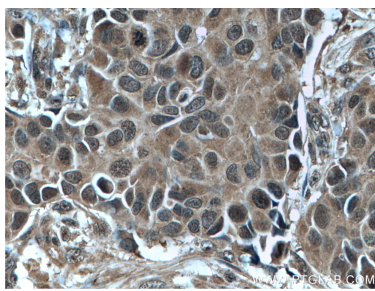
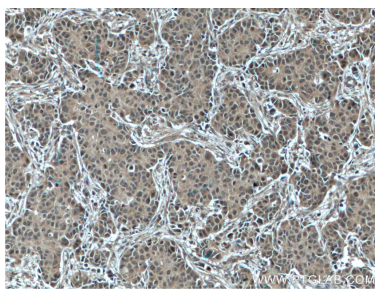
W: [ptgcn.com](http://ptgcn.com)

**This product is exclusively available under Proteintech Group brand and is not available to purchase from any other manufacturer.**

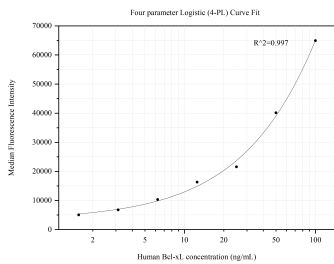
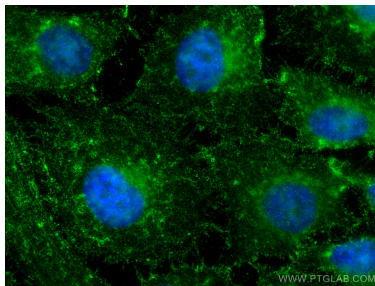
Selected Validation Data



Jurkat, Ramos, K-562 and Raw 264.7 cells were subjected to SDS PAGE followed by western blot with 66020-1-Ig (Bcl-xL Antibody) at dilution of 1:20000 incubated at room temperature for 1.5 hours. This data was developed using the same antibody clone with 66020-1-PBS in a different storage buffer formulation.



1X10<sup>6</sup> HeLa cells were intracellularly stained with 0.4 ug Anti-Human Bcl-XL (66020-1-Ig, Clone:4C12A6) and CoraLite®488-Conjugated AffiniPure Goat Anti-Mouse IgG(H+L) at dilution 1:1000 (red), or 0.4 ug Control Antibody. Cells were fixed and permeabilized with Transcription Factor Staining Buffer Kit (PF00011). This data was developed using the same antibody clone with 66020-1-PBS in a different storage buffer formulation.



Cytometric bead array standard curve of MP50613-1, Bcl-xL Monoclonal Matched Antibody Pair, PBS Only. Capture antibody: 66020-2-PBS. Detection antibody: 66020-1-PBS. Standard:Ag18037. Range: 1.563-100 ng/mL