

For Research Use Only

6*His, His-Tag Monoclonal antibody

Catalog Number: 66005-1-Ig **1080 Publications**



Basic Information

Catalog Number:

66005-1-Ig

Concentration:

1500 ug/ml

Source:

Mouse

Isotype:

IgG1

GenBank Accession Number:

GeneID (NCBI):

UNIPROT ID:

HISTAG

Full Name:

Calculated MW:

0.84 kDa

Purification Method:

Protein G purification

CloneNo.:

1B7G5

Recommended Dilutions:

WB: 1:5000-1:50000

IP: 0.5-4.0 ug for 1.0-3.0 mg of total protein lysate

IF/ICC: 1:200-1:800

FC: 0.20 ug per 10⁶ cells in a 100 µl suspension

Applications

Tested Applications:

WB, IF/ICC, FC, IP, ELISA

Cited Applications:

WB, IHC, IF, FC, IP, CoIP, ChIP, ELISA

Species Specificity:

recombinant protein

Cited Species:

human, mouse, chicken, hamster, yeast

Positive Controls:

WB: recombinant protein,

IP: Transfected HEK-293 cells,

IF/ICC: Transfected HEK-293 cells,

FC: Transfected HEK-293 cells,

Background Information

Protein tags are protein or peptide sequences located either on the C- or N- terminal of the target protein, which facilitates one or several of the following characteristics: solubility, detection, purification, localization and expression. His-tag is often used for affinity purification and binding assays. Expressed His-tagged proteins can be purified and detected easily because the string of histidine residues binds to several types of immobilized metal ions, including nickel, cobalt and copper, under specific buffer conditions. The His-tag antibody is a useful tool for monitoring of the His-tagged proteins, and recognizes His-tags placed at N-terminal, C-terminal, and internal regions of fusion proteins expressed in bacteria, insect, and mammalian cells.

Notable Publications

Author	Pubmed ID	Journal	Application
Yanan Shao	36177860	Mol Plant Pathol	WB
Yueke Lin	36178239	EMBO Rep	WB, IP
Hao Yang	27708221	Oncotarget	

Storage

Storage:

Store at -20°C. Stable for one year after shipment.

Storage Buffer:

PBS with 0.02% sodium azide and 50% glycerol, pH7.3

Aliquoting is unnecessary for -20°C storage

For technical support and original validation data for this product please contact:

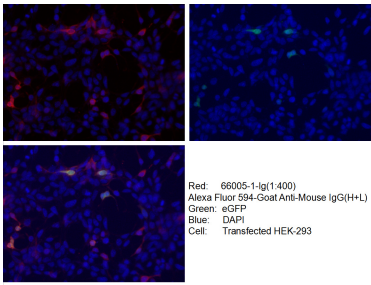
T: 4006900926

E: Proteintech-CN@ptglab.com

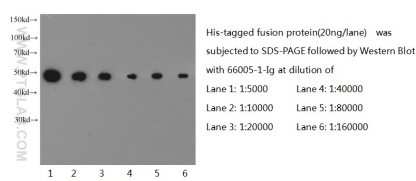
W: ptgcn.com

This product is exclusively available under Proteintech Group brand and is not available to purchase from any other manufacturer.

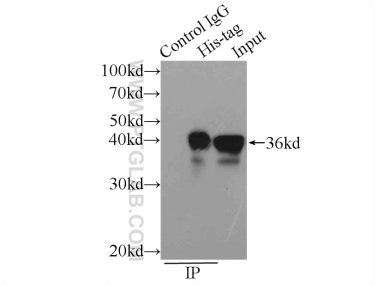
Selected Validation Data



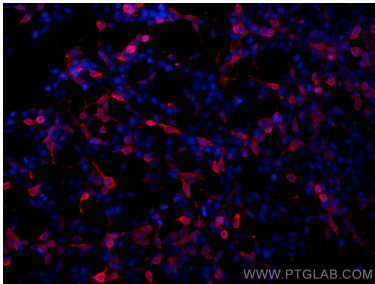
Immunofluorescent analysis of (-20°C Ethanol) fixed Transfected HEK-293 cells using 66005-1-Ig (6*His, His-Tag antibody) at dilution of 1:400 and Alexa Fluor 594-Conjugated AffiniPure Goat Anti-Mouse IgG(H+L).



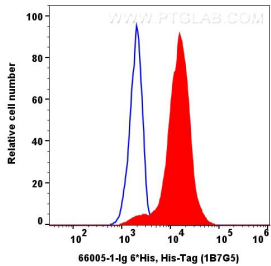
Western blot of 6*His-tagged fusion protein with anti-6*His tag (66005-1-Ig) at various dilutions.



IP result of anti-6*His, His-Tag (IP:66005-1-Ig, 7ug; Detection:66005-1-Ig 1:10000) with Transfected HEK-293 cells lysate 300ug.



Immunofluorescent analysis of (-20°C Ethanol) fixed Transfected HEK-293 cells using 6*His, His-Tag antibody (66005-1-Ig, Clone: 1B7G5) at dilution of 1:800 and CoraLite®594-Conjugated AffiniPure Goat Anti-Mouse IgG(H+L) (SA00013-1).



1x10⁶ His tagged FGFR2 Transfected HEK-293 cells were surface stained with 0.2 μg 6*His, His-Tag Monoclonal antibody (66005-1-Ig, Clone:1B7G5, red) and CoraLite488-conjugated Goat Anti-Mouse IgG(H+L) (Cat.NO. SA00013-1). Mouse IgG1 isotype control (66360-1-Ig, Clone: 1F8D3, blue) was parallel stained as control. Cells were not fixed.