

For Research Use Only

Anti-Human HLA-DR (L243)

Catalog Number: 65218-1-Ig **1 Publications**



Basic Information

Catalog Number:

65218-1-Ig

Concentration:

100ug, 500 µg/ml

Source:

Mouse

Isotype:

IgG2a, kappa

GenBank Accession Number:

BC032350

GeneID (NCBI):

3122

ENSEMBL Gene ID:

ENSG00000204287

UNIPROT ID:

P01903

Full Name:

major histocompatibility complex,
class II, DR alpha

Calculated MW:

254 aa, 29 kDa

Purification Method:

Protein A purification

CloneNo.:

L243

Recommended Dilutions:

FC: 0.2 ug per 10⁶ cells in 100 µl
suspension

Applications

Tested Applications:

FC

Cited Applications:

IF

Species Specificity:

Human

Cited Species:

human

Positive Controls:

FC : human PBMCs,

Background Information

Notable Publications

Author	Pubmed ID	Journal	Application
Chiara Beretta	40275347	J Neuroinflammation	IF

Storage

Storage:

Store at 2-8°C. Stable for one year after shipment.

Storage Buffer:

PBS with 0.09% sodium azide, pH7.3

For technical support and original validation data for this product please contact:

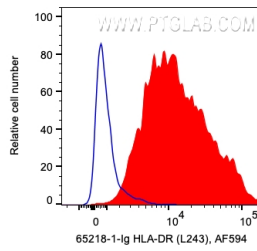
T: 4006900926

E: Proteintech-CN@ptglab.com

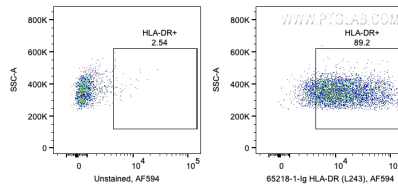
W: ptgcn.com

This product is exclusively available under Proteintech Group brand and is not available to purchase from any other manufacturer.

Selected Validation Data



1X10⁶ human PBMCs were surface stained with 0.2 ug Anti-Human HLA-DR (65218-1-Ig, Clone:L243) and CoraLite®594-Conjugated Goat Anti-Mouse IgG(H+L) at dilution 1:1000. Cells were not fixed. Monocytes were gated.



1X10⁶ human PBMCs were surface stained with 0.2 ug Anti-Human HLA-DR (65218-1-Ig, Clone:L243) and CoraLite®594-Conjugated Goat Anti-Mouse IgG(H+L) at dilution 1:1000. Cells were not fixed. Monocytes were gated.