

For Research Use Only

Anti-Human CD107a / LAMP1 (H4A3)

Catalog Number: 65051-1-Ig **9 Publications**



Basic Information

Catalog Number:

65051-1-Ig

Concentration:

100ug, 0.5 mg/ml

Source:

Mouse

Isotype:

IgG1, kappa

GenBank Accession Number:

BC006345

GeneID (NCBI):

3916

ENSEMBL Gene ID:

ENSG00000185896

UNIPROT ID:

P11279

Full Name:

lysosomal-associated membrane protein 1

Calculated MW:

45 kDa

Observed MW:

100-120 kDa

Purification Method:

Protein G purification

CloneNo.:

H4A3

Recommended Dilutions:

WB: 1:1000-1:8000

IF/ICC: 1:50-1:500

FC (Intra): 0.2 ug per 10⁶ cells in 100 μ l suspension

Applications

Tested Applications:

WB, IF/ICC, FC (Intra)

Cited Applications:

WB, IF

Species Specificity:

human

Cited Species:

human, mouse, monkey

Positive Controls:

WB : HEK-293 cells, HeLa cells, Jurkat cells

IF/ICC : HeLa cells,

FC (Intra) : HeLa cells,

Background Information

LAMP1 (CD107a) is a heavily glycosylated membrane protein enriched in the lysosomal membrane. LAMP1 is extensively glycosylated with asparagine-linked oligosaccharides which protect it from intracellular proteolysis (PMID: 10521503). Although LAMP1 is expressed largely in the endosome-lysosomal membrane of cells, it is also found on the plasma membrane (PMID: 16168398). Elevated LAMP1 expression at the cell surface has also been detected during platelet and granulocytic cell activation, as well as in some tumor cells (PMID: 29085473). LAMP1 functions to provide selectins with carbohydrate ligands. This protein has also been shown to be a marker of degranulation on lymphocytes such as CD8⁺ and NK cells and may also play a role in tumor cell differentiation and metastasis (PMID: 18835598; 29085473; 9426697).

Notable Publications

Author	Pubmed ID	Journal	Application
Jia-min Yan	34747299	Autophagy	WB,IF
Zhaozhong Liao	36078115	Cells	IF
Weiwei Liang	40135564	CNS Neurosci Ther	IF

Storage

Storage:

Store at 2-8°C. Stable for one year after shipment.

Storage Buffer:

PBS with 0.09% sodium azide, pH7.3

For technical support and original validation data for this product please contact:

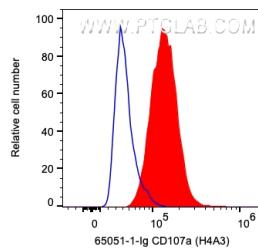
T: 4006900926

E: Proteintech-CN@ptglab.com

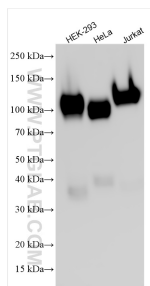
W: ptgcn.com

This product is exclusively available under Proteintech Group brand and is not available to purchase from any other manufacturer.

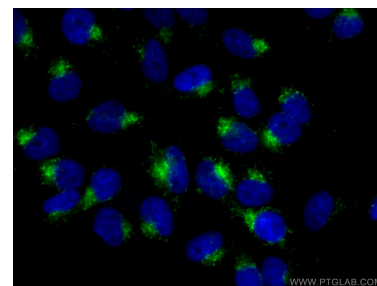
Selected Validation Data



1X10⁶ HeLa cells were intracellularly stained with 0.2 ug Anti-Human CD107a / LAMP1 (65051-1-Ig, Clone:H4A3) and CoraLite®594-Conjugated AffiniPure Goat Anti-Mouse IgG(H+L) at dilution 1:1000. Cells were fixed with 4% PFA and permeabilized with Flow Cytometry Perm Buffer (PF00011-C).



Various lysates were subjected to SDS PAGE followed by western blot with 65051-1-Ig (CD107a / LAMP1 antibody) at dilution of 1:4000 incubated at room temperature for 1.5 hours.



Immunofluorescent analysis of (4% PFA) fixed HeLa cells using 65051-1-Ig (CD107a antibody) at dilution of 1:100 and CoraLite488-Conjugated AffiniPure Goat Anti-Mouse IgG(H+L).