

For Research Use Only

CD41 Monoclonal antibody

Catalog Number: 60350-1-Ig **1 Publications**



Basic Information

Catalog Number: 60350-1-Ig	GenBank Accession Number: BC126442	Purification Method: Protein G purification
Concentration: 1800 ug/ml	GeneID (NCBI): 3674	CloneNo.: 6D7C5
Source: Mouse	UNIPROT ID: P08514	Recommended Dilutions: WB: 1:500-1:3200
Isotype: IgG1	Full Name: integrin, alpha 2b (platelet glycoprotein IIb of IIb/IIIa complex, antigen CD41)	
	Calculated MW: 113 kDa	
	Observed MW: 125 kDa	

Applications

Tested Applications: WB, ELISA	Positive Controls: WB : human spleen tissue,
Cited Applications: WB	
Species Specificity: human	
Cited Species: human	

Background Information

The integrins are a superfamily of cell adhesion receptors that bind to extracellular matrix ligands, cell-surface ligands, and soluble ligands (PMID: 17543136). They are transmembrane $\alpha\beta$ heterodimers and at least 24 distinct integrin heterodimers are formed by the combination of 18 α and eight β known subunits (PMID: 17543136; 20029421). In addition to mediating cell adhesion, integrins also play important roles in modulating signal transduction pathways that control cellular responses including migration, proliferation, differentiation, and apoptosis (PMID: 19118207). Integrin α -IIb (ITGA2B, CD41) is expressed on platelets, megakaryocytes and some hematopoietic progenitor cells (PMID: 11934866). This protein undergoes post-translational cleavage to yield disulfide linked light beta (25 kDa) and heavy alpha (125 kDa) chains, which join with integrin beta3 (CD61) to form a receptor for fibronectin, fibrinogen, plasminogen, prothrombin, thrombospondin and vitronectin. CD41/CD61 is crucial for platelet aggregation through binding of soluble fibrinogen.

Notable Publications

Author	Pubmed ID	Journal	Application
Molin Li	38374439	Commun Biol	WB

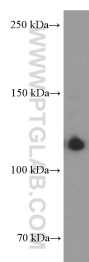
Storage

Storage:
Store at -20°C. Stable for one year after shipment.
Storage Buffer:
PBS with 0.02% sodium azide and 50% glycerol, pH7.3
Aliquoting is unnecessary for -20°C storage

For technical support and original validation data for this product please contact:
T: 4006900926 E: Proteintech-CN@ptglab.com W: ptgcn.com

This product is exclusively available under Proteintech Group brand and is not available to purchase from any other manufacturer.

Selected Validation Data



human spleen tissue were subjected to SDS PAGE followed by western blot with 60350-1-Ig (CD41/Integrin alpha 2b Antibody) at dilution of 1:1600 incubated at room temperature for 1.5 hours.