

For Research Use Only

APP Monoclonal antibody

Catalog Number: 60342-1-Ig

Featured Product

25 Publications



Basic Information

Catalog Number:

60342-1-Ig

Concentration:

1000 ug/ml

Source:

Mouse

Isotype:

IgG2a

Immunogen Catalog Number:

AG0769

GenBank Accession Number:

BC004369

GeneID (NCBI):

351

UNIPROT ID:

P05067

Full Name:

amyloid beta (A4) precursor protein

Calculated MW:

87 kDa

Observed MW:

100 kDa

Purification Method:

Protein A purification

CloneNo.:

5C2A1

Recommended Dilutions:

WB: 1:1000-1:4000

IHC: 1:20-1:200

Applications

Tested Applications:

WB, IHC, ELISA

Cited Applications:

WB, IHC, IF, IP

Species Specificity:

human, rat, pig, rabbit

Cited Species:

human, mouse, rat

Note-IHC: suggested antigen retrieval with TE buffer pH 9.0; (*) Alternatively, antigen retrieval may be performed with citrate buffer pH 6.0

Positive Controls:

WB : pig brain tissue, HEK-293 cells, Y79 cells, rabbit brain tissue, rat brain tissue

IHC : human gliomas tissue,

Background Information

A β derives from APP via proteolytic cleavage by proteases called α -, β - and γ -secretase. The α -secretase cleavage precludes the formation of A β , while the β - and γ -cleavages generate APP components with amyloidogenic features. Amyloid beta A4 precursor protein (APP), encoded by APP gene which locate on human chromosome 21q, is a cell surface receptor and performs physiological functions on the surface of neurons relevant to neurite growth, neuronal adhesion and axonogenesis. APP expressed in all fetal tissues and is pronounced in brain, kidney, heart and spleen, but weak in liver. Defects in APP are the cause of Alzheimer disease type 1 (AD1).

Notable Publications

Author	Pubmed ID	Journal	Application
Chao Zhou	31509519	Aging (Albany NY)	WB,IF
Wenting Hu	35286657	Neurotherapeutics	WB
Naoki Nishida	28666147	Cardiovasc Pathol	IHC

Storage

Storage:

Store at -20°C. Stable for one year after shipment.

Storage Buffer:

PBS with 0.02% sodium azide and 50% glycerol, pH7.3

Aliquoting is unnecessary for -20°C storage

For technical support and original validation data for this product please contact:

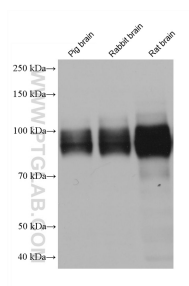
T: 4006900926

E: Proteintech-CN@ptglab.com

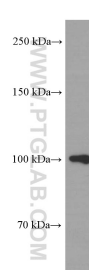
W: ptgcn.com

This product is exclusively available under Proteintech Group brand and is not available to purchase from any other manufacturer.

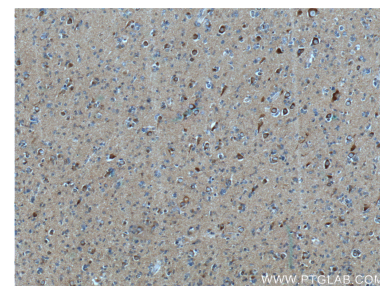
Selected Validation Data



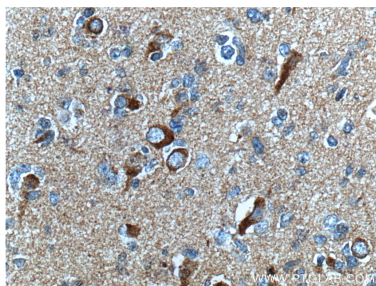
Various lysates were subjected to SDS PAGE followed by western blot with 60342-1-Ig (APP antibody) at dilution of 1:2000 incubated at room temperature for 1.5 hours.



Y79 cells were subjected to SDS PAGE followed by western blot with 60342-1-Ig (APP Antibody) at dilution of 1:1000 incubated at room temperature for 1.5 hours.



Immunohistochemical analysis of paraffin-embedded human gliomas tissue slide using 60342-1-Ig (APP Antibody) at dilution of 1:200 (under 10x lens). Heat mediated antigen retrieval with Tris-EDTA buffer (pH 9.0).



Immunohistochemical analysis of paraffin-embedded human gliomas tissue slide using 60342-1-Ig (APP Antibody) at dilution of 1:200 (under 40x lens). Heat mediated antigen retrieval with Tris-EDTA buffer (pH 9.0).