

For Research Use Only

# Vimentin Monoclonal antibody, PBS Only (Detector)

Catalog Number: 60330-1-PBS

Featured Product



## Basic Information

Catalog Number:

60330-1-PBS

Concentration:

1mg/ml

Source:

Mouse

Isotype:

IgG1

Immunogen Catalog Number:

AG0489

GenBank Accession Number:

BC000163

GeneID (NCBI):

7431

ENSEMBL Gene ID:

ENSG00000026025

UNIPROT ID:

P08670

Full Name:

vimentin

Calculated MW:

466 aa, 54 kDa

Observed MW:

55-60 kDa

Purification Method:

Protein G purification

CloneNo.:

3H9D1

## Applications

Tested Applications:

WB, IHC, IF/ICC, Cytometric bead array, Sandwich ELISA, Indirect ELISA, Sample test

Species Specificity:

human, mouse, rat

## Background Information

Vimentin, also named as VIM, belongs to the intermediate filament family. Vimentin is class-III intermediate filaments found in various non-epithelial cells, especially mesenchymal cells. Vimentin is important for stabilizing the architecture of the cytoplasm. Monocyte-derived macrophages secrete vimentin into the extracellular space in vitro. Secretion of vimentin was enhanced by the proinflammatory cytokine tumor necrosis factor- $\alpha$  (TNF $\alpha$ ; 191160) and inhibited by the antiinflammatory cytokine IL10 (124092), suggesting that vimentin is involved in the immune response. Vimentin has specialized functions that contribute to specific dynamic cellular processes. As a phosphoprotein, 55-60 kDa of vimentin proteins can be observed due to the different phosphorylation level.

## Storage

Storage:

Store at -80°C.

The product is shipped with ice packs. Upon receipt, store it immediately at -80°C

Storage Buffer:

PBS only, pH7.3

For technical support and original validation data for this product please contact:

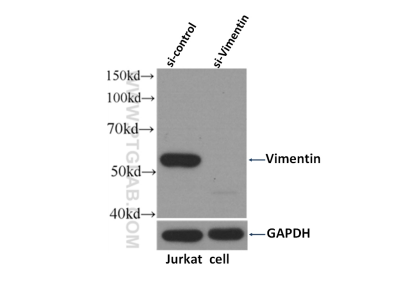
T: 4006900926

E: [Proteintech-CN@ptglab.com](mailto:Proteintech-CN@ptglab.com)

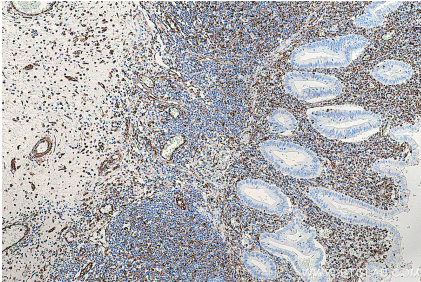
W: [ptgcn.com](http://ptgcn.com)

This product is exclusively available under Proteintech Group brand and is not available to purchase from any other manufacturer.

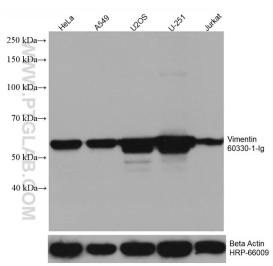
Selected Validation Data



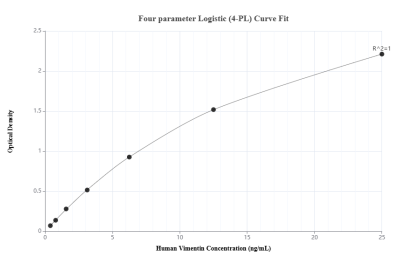
WB result of Vimentin antibody (60330-1-Ig, 1:4000) with si-Control and si-Vimentin transfected Jurkat cells. This data was developed using the same antibody clone with 60330-1-PBS in a different storage buffer formulation.



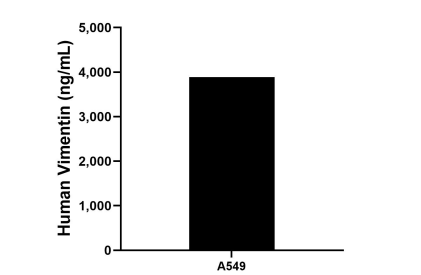
Immunohistochemical analysis of paraffin-embedded human appendicitis tissue slide using 60330-1-Ig (Vimentin antibody) at dilution of 1:8000 (under 10x lens). Heat mediated antigen retrieval with Tris-EDTA buffer (pH 9.0). This data was developed using the same antibody clone with 60330-1-PBS in a different storage buffer formulation.



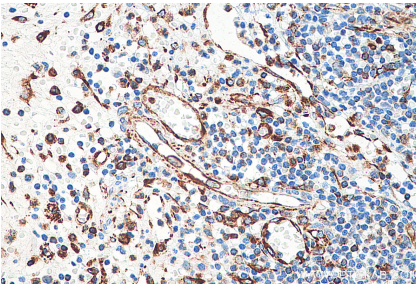
Various lysates were subjected to SDS PAGE followed by western blot with 60330-1-Ig (Vimentin antibody) at dilution of 1:50000 incubated at room temperature for 1.5 hours. The membrane was stripped and reblotted with HRP-conjugated Beta Actin Monoclonal antibody (HRP-66009) as loading control. This data was developed using the same antibody clone with 60330-1-PBS in a different storage buffer formulation.



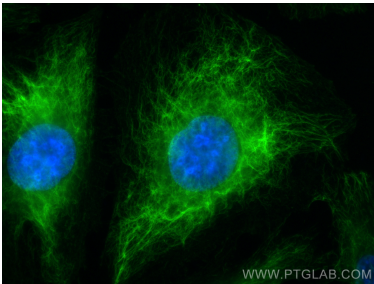
Sandwich ELISA standard curve of MP50158-1, Human Vimentin Monoclonal Matched Antibody Pair - PBS only. 60330-2-PBS was coated to a plate as the capture antibody and incubated with serial dilutions of standard Ag0489. 60330-1-PBS was HRP conjugated as the detection antibody. Range: 0.391-25 ng/mL



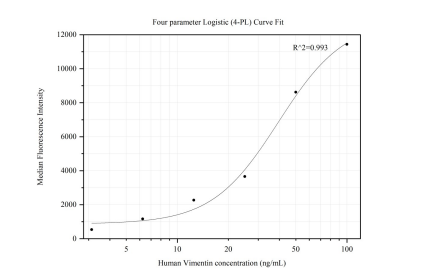
The mean Vimentin concentration was determined to be 3,886.65 ng/mL in A549 cell extract based on a 2.6 mg/mL extract load.



Immunohistochemical analysis of paraffin-embedded human appendicitis tissue slide using 60330-1-Ig (Vimentin antibody) at dilution of 1:8000 (under 40x lens). Heat mediated antigen retrieval with Tris-EDTA buffer (pH 9.0). This data was developed using the same antibody clone with 60330-1-PBS in a different storage buffer formulation.



Immunofluorescent analysis of (-20°C Methanol) fixed HUVEC cells using Vimentin antibody (60330-1-Ig, Clone: 3H9D1) at dilution of 1:1000 and CoraLite®488-Conjugated AffiniPure Goat Anti-Mouse IgG(H+L). This data was developed using the same antibody clone with 60330-1-PBS in a different storage buffer formulation.



Cytometric bead array standard curve of MP50158-1, Vimentin Monoclonal Matched Antibody Pair, PBS Only. Capture antibody: 60330-2-PBS. Detection antibody: 60330-1-PBS. Standard:Ag0489. Range: 3.125-100 ng/mL