

For Research Use Only

# Chk1 Monoclonal antibody

Catalog Number: 60277-1-Ig **11 Publications**



## Basic Information

Catalog Number: 60277-1-Ig	GenBank Accession Number: BC004202	Purification Method: Protein A purification
Concentration: 2100 µg/ml	GeneID (NCBI): 1111	CloneNo.: 3A3A5
Source: Mouse	UNIPROT ID: O14757	Recommended Dilutions: WB: 1:1000-1:3000 IHC: 1:250-1:1000
Isotype: IgG2b	Full Name: CHK1 checkpoint homolog (S. pombe)	
Immunogen Catalog Number: AG0409	Calculated MW: 54 kDa Observed MW: 50 kDa	

## Applications

Tested Applications: WB, IHC, ELISA	Positive Controls:
Cited Applications: WB	WB : HeLa cells, NIH/3T3 cells, HEK-293 cells, Jurkat cells, K-562 cells
Species Specificity: human, mouse, rat	IHC : human breast cancer tissue,
Cited Species: human, mouse	
<b>Note-IHC: suggested antigen retrieval with TE buffer pH 9.0; (*) Alternatively, antigen retrieval may be performed with citrate buffer pH 6.0</b>	

## Background Information

CHK1(Checkpoint kinase-1) is also named as CHK1 and belongs to the protein kinase superfamily. It is implicated in a circuit in which it activates checkpoints, DNA repair and proliferating cell nuclear antigen and FANCD2 monoubiquitylation(PMID:21389083). CHK1 protects vertebrate cells against spontaneous chromosome missegregation and is required to sustain anaphase delay when spindle function is disrupted by taxol(PMID:17276342). It has 3 isoforms produced by alternative splicing with the molecular mass of 54 kDa, 44 kDa and 50 kDa.

## Notable Publications

Author	Pubmed ID	Journal	Application
Ping Li	34285189	Cell Death Discov	WB
Xinxin Zuo	33398173	Nat Struct Mol Biol	WB
Shanhui Liu	40101850	Cell Signal	WB

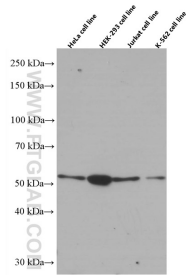
## Storage

Storage:  
Store at -20°C. Stable for one year after shipment.  
Storage Buffer:  
PBS with 0.02% sodium azide and 50% glycerol, pH7.3  
Aliquoting is unnecessary for -20°C storage

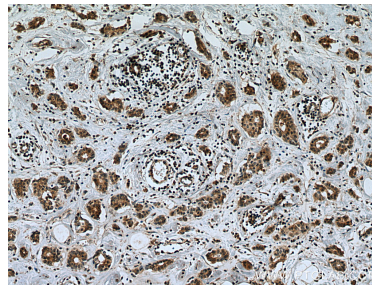
For technical support and original validation data for this product please contact:  
T: 4006900926 E: Proteintech-CN@ptglab.com W: ptgcn.com

This product is exclusively available under Proteintech Group brand and is not available to purchase from any other manufacturer.

## Selected Validation Data



Various lysates were subjected to SDS PAGE followed by western blot with 60277-1-Ig (Chk1 antibody) at dilution of 1:3000 incubated at room temperature for 1.5 hours.



Immunohistochemical analysis of paraffin-embedded human breast cancer tissue slide using 60277-1-Ig (Chk1 antibody) at dilution of 1:500 (under 10x lens). Heat mediated antigen retrieval with Tris-EDTA buffer (pH 9.0).