

For Research Use Only

CD23 Monoclonal antibody

Catalog Number: 60208-2-Ig **1 Publications**



Basic Information

Catalog Number: 60208-2-Ig	GenBank Accession Number: BC064417	Purification Method: Protein A purification
Concentration: 1100 ug/ml	GeneID (NCBI): 2208	CloneNo.: 4C7C9
Source: Mouse	UNIPROT ID: P06734	Recommended Dilutions: WB: 1:1000-1:8000 IHC: 1:50-1:500 IF-P: 1:200-1:800
Isotype: IgG2a	Full Name: Fc fragment of IgE, low affinity II, receptor for (CD23)	
Immunogen Catalog Number: AG0425	Calculated MW: 321 aa, 36 kDa	
	Observed MW: 40 kDa	

Applications

Tested Applications: WB, IHC, IF-P, ELISA	Positive Controls:
Species Specificity: human, mouse	WB: Raji cells,
Cited Species: human	IHC: human tonsillitis tissue, human lymphoma tissue
	IF-P: human tonsillitis tissue,
Note-IHC: suggested antigen retrieval with TE buffer pH 9.0; (*) Alternatively, antigen retrieval may be performed with citrate buffer pH 6.0	

Background Information

CD23, also known as low affinity immunoglobulin epsilon Fc receptor, is a transmembrane glycoprotein present on a subpopulation of B lymphocytes in germinal centres, EBV-transformed B-lymphoblastoid cell lines, follicular dendritic cells, and a subpopulation of peripheral blood cells. CD23 has essential roles in the regulation of IgE production and in the differentiation of B-cells.

Notable Publications

Author	Pubmed ID	Journal	Application
Qing Wang	37525587	Clin Transl Med	

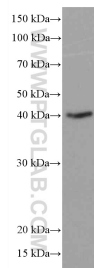
Storage

Storage:
Store at -20°C. Stable for one year after shipment.
Storage Buffer:
PBS with 0.02% sodium azide and 50% glycerol, pH7.3
Aliquoting is unnecessary for -20°C storage

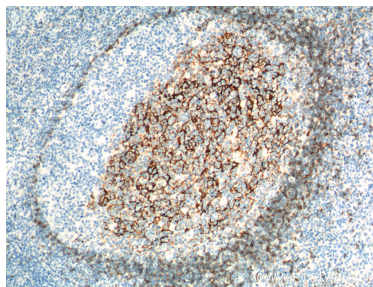
For technical support and original validation data for this product please contact:
T: 4006900926 E: Proteintech-CN@ptglab.com W: ptgcn.com

This product is exclusively available under Proteintech Group brand and is not available to purchase from any other manufacturer.

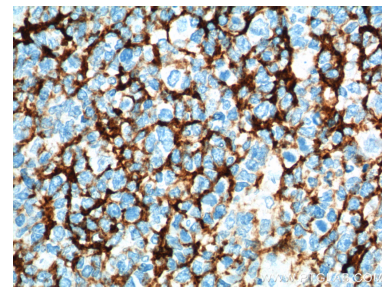
Selected Validation Data



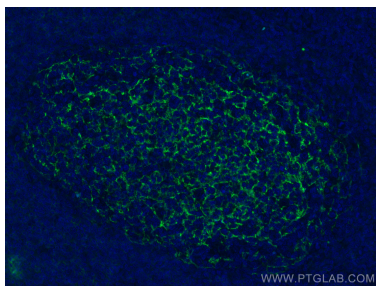
Raji cells were subjected to SDS PAGE followed by western blot with 60208-2-Ig (CD23 antibody) at dilution of 1:4000 incubated at room temperature for 1.5 hours.



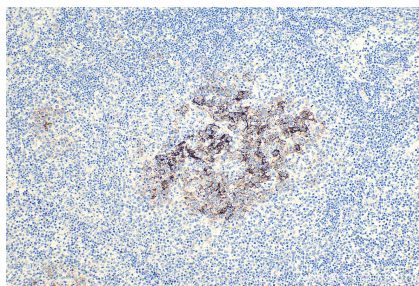
Immunohistochemical analysis of paraffin-embedded human tonsillitis tissue slide using 60208-2-Ig (CD23 antibody at dilution of 1:200 (under 10x lens). Heat mediated antigen retrieval with Tris-EDTA buffer (pH 9.0).



Immunohistochemical analysis of paraffin-embedded human tonsillitis tissue slide using 60208-2-Ig (CD23 antibody at dilution of 1:200 (under 40x lens). Heat mediated antigen retrieval with Tris-EDTA buffer (pH 9.0).



Immunofluorescent analysis of (4% PFA) fixed paraffin-embedded human tonsillitis tissue using CD23 antibody (60208-2-Ig, Clone: 4C7C9) at dilution of 1:400 and Coralite® 488-Conjugated Goat Anti-Mouse IgG(H+L) (SA00013-1). Heat mediated antigen retrieval with Tris-EDTA buffer (pH 9.0).



Immunohistochemical analysis of paraffin-embedded human lymphoma tissue slide using 60208-2-Ig (CD23 antibody) at dilution of 1:10000 (under 10x lens). Heat mediated antigen retrieval with Tris-EDTA buffer (pH 9.0).