

For Research Use Only

BCL2 Monoclonal antibody, PBS Only (Capture)

Catalog Number: 60178-1-PBS

Featured Product



Basic Information

Catalog Number:

60178-1-PBS

Concentration:

1000 µg/ml

Source:

Mouse

Isotype:

IgG2b

Immunogen Catalog Number:

AG3508

GenBank Accession Number:

BC027258

GeneID (NCBI):

596

UNIPROT ID:

P10415

Full Name:

B-cell CLL/lymphoma 2

Calculated MW:

26 kDa

Observed MW:

26 kDa

Purification Method:

Protein A purification

CloneNo.:

4H8C6

Applications

Tested Applications:

IHC, IF/ICC, IF-P, IP, Cytometric bead array, Indirect ELISA

Species Specificity:

human, pig

Background Information

BCL2 belongs to the Bcl-2 family. It suppresses apoptosis in a variety of cell systems including factor-dependent lymphohematopoietic and neural cells. BCL2 regulates cell death by controlling the mitochondrial membrane permeability. It appears to function in a feedback loop system with caspases. BCL2 inhibits caspase activity either by preventing the release of cytochrome c from the mitochondria and/or by binding to the apoptosis-activating factor (APAF-1).

Storage

Storage:

Store at -80°C.

The product is shipped with ice packs. Upon receipt, store it immediately at -80°C

Storage Buffer:

PBS only, pH7.3

For technical support and original validation data for this product please contact:

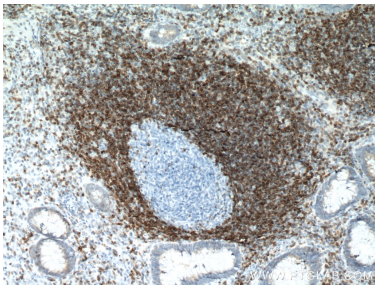
T: 4006900926

E: Proteintech-CN@ptglab.com

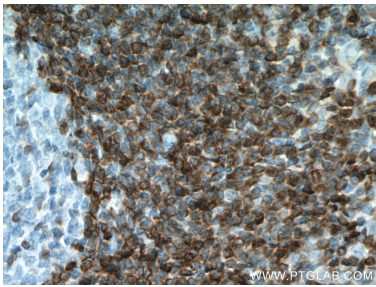
W: ptgcn.com

This product is exclusively available under Proteintech Group brand and is not available to purchase from any other manufacturer.

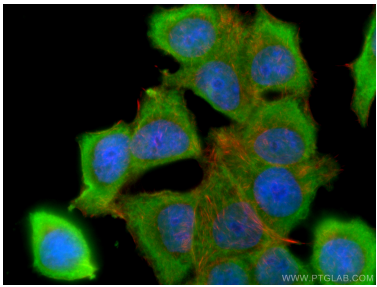
Selected Validation Data



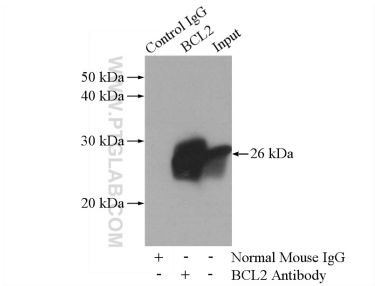
Immunohistochemical analysis of paraffin-embedded human appendicitis tissue slide using 60178-1-Ig (BCL2 antibody) at dilution of 1:12800 (under 10x lens. Heat mediated antigen retrieval with Tris-EDTA buffer (pH 9.0). This data was developed using the same antibody clone with 60178-1-PBS in a different storage buffer formulation.



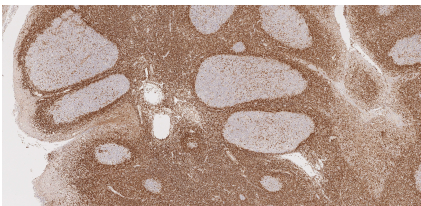
Immunohistochemical analysis of paraffin-embedded human appendicitis tissue slide using 60178-1-Ig (BCL2 antibody) at dilution of 1:12800 (under 40x lens. Heat mediated antigen retrieval with Tris-EDTA buffer (pH 9.0). This data was developed using the same antibody clone with 60178-1-PBS in a different storage buffer formulation.



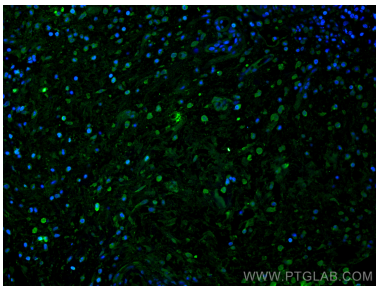
Immunofluorescent analysis of (-20°C Ethanol) fixed MCF-7 cells using BCL2 antibody (60178-1-Ig, Clone: 4H8C6) at dilution of 1:400 and CoraLite®488-Conjugated AffiniPure Goat Anti-Mouse IgG(H+L). This data was developed using the same antibody clone with 60178-1-PBS in a different storage buffer formulation.



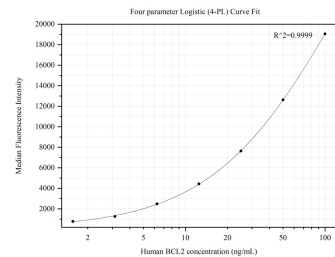
IP result of anti-BCL2 (IP:60178-1-Ig, 5ug; Detection:60178-1-Ig 1:1000) with U-937 cells lysate 4000ug. This data was developed using the same antibody clone with 60178-1-PBS in a different storage buffer formulation.



Immunohistochemical analysis of paraffin-embedded human tonsillitis tissue slide using 60178-1-Ig (BCL2 antibody) at dilution of 1:10000 (under 10x lens). Heat mediated antigen retrieval with Tris-EDTA buffer (pH 9.0). This data was developed using the same antibody clone with 60178-1-PBS in a different storage buffer formulation.



Immunofluorescent analysis of (4% PFA) fixed human appendicitis tissue using BCL2 antibody (60178-1-Ig, Clone: 4H8C6) at dilution of 1:200 and CoraLite®488-Conjugated AffiniPure Goat Anti-Mouse IgG(H+L). This data was developed using the same antibody clone with 60178-1-PBS in a different storage buffer formulation.



Cytometric bead array standard curve of MP50290-2, BCL2 Monoclonal Matched Antibody Pair, PBS Only. Capture antibody: 60178-1-PBS. Detection antibody: 60178-2-PBS. Standard:Ag3508. Range: 1.563-100 ng/mL.