

Septin 2 Monoclonal antibody

Catalog Number: 60075-1-Ig

Featured Product

18 Publications

Basic Information

Catalog Number:

60075-1-Ig

Concentration:

1000 ug/ml

Source:

Mouse

Isotype:

IgG1

Immunogen Catalog Number:

AG1946

GenBank Accession Number:

BC014455

GeneID (NCBI):

4735

UNIPROT ID:

Q15019

Full Name:

septin 2

Calculated MW:

41 kDa

Observed MW:

42-45 kDa

Purification Method:

Protein G purification

CloneNo.:

2F3B2

Recommended Dilutions:

WB: 1:20000-1:100000

IHC: 1:50-1:2000

IF/ICC: 1:400-1:1600

FC (Intra): 0.40 ug per 10⁶ cells in a 100 µl suspension

Applications

Tested Applications:

WB, IHC, IF/ICC, FC (Intra), ELISA

Cited Applications:

WB, IF, ColP

Species Specificity:

human, mouse, rat

Cited Species:

human, mouse, rat, canine

Note-IHC: suggested antigen retrieval with TE buffer pH 9.0; (*) Alternatively, antigen retrieval may be performed with citrate buffer pH 6.0

Positive Controls:

WB: LNCaP cells, Jurkat cells, fetal human brain tissue, human testis tissue, HeLa cells, HEK-293 cells, HepG2 cells, K-562 cells, HSC-T6 cells, NIH/3T3 cells, 4T1 cells, MCF-7 cells, HSCT6 cells, ROS1728 cells, Neuro-2A cells

IHC: human renal cell carcinoma tissue, human brain tissue, human liver cancer tissue

IF/ICC: K-562 cells, hTERT-RPE cells

FC (Intra): K-562 cells,

Background Information

Septin 2, also named as DIFF6, KIAA0158, NEDD5, belongs to the septin family. It is a filament-forming cytoskeletal GTPase. Septin 2 is required for normal organization of the actin cytoskeleton. It plays a role in ciliogenesis and collective cell movements. Septin 2 is coordinated expression with Septin 6 and Septin 7. (PMID:21737677)

Notable Publications

Author	Pubmed ID	Journal	Application
Lei Wang	34782749	Cell Res	WB
Damián Lobato-Márquez	29752866	Cytoskeleton (Hoboken)	WB, IF
Oleg V Kim	35832887	iScience	ColP

Storage

Storage:

Store at -20°C. Stable for one year after shipment.

Storage Buffer:

PBS with 0.02% sodium azide and 50% glycerol, pH7.3

Aliquoting is unnecessary for -20°C storage

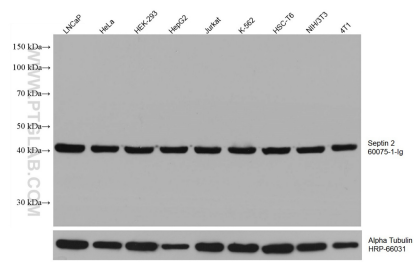
For technical support and original validation data for this product please contact:

T: 4006900926

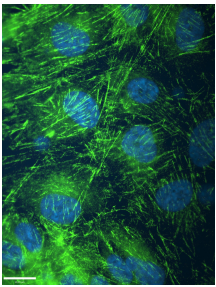
E: Proteintech-CN@ptglab.comW: ptgcn.com

This product is exclusively available under Proteintech Group brand and is not available to purchase from any other manufacturer.

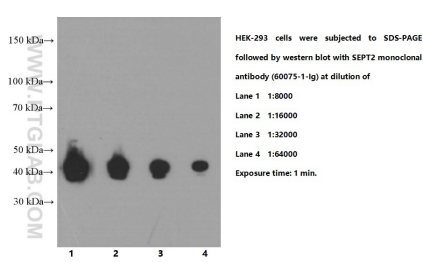
Selected Validation Data



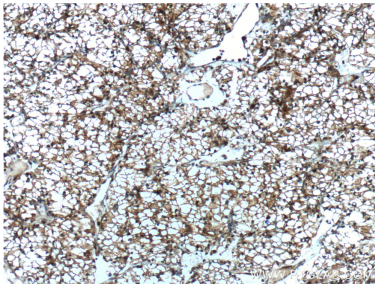
Various lysates were subjected to SDS PAGE followed by western blot with 60075-1-Ig (Septin 2 antibody) at dilution of 1:100000 incubated at room temperature for 1.5 hours. The membrane was stripped and reblotted with HRP-conjugated Alpha Tubulin Monoclonal antibody (HRP-66031) as loading control.



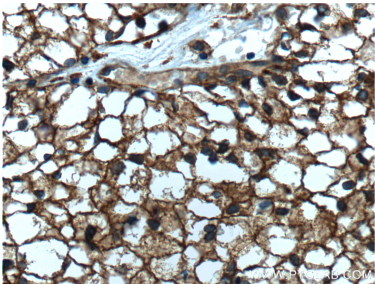
IF result of anti-Septin 2 (60075-1-Ig, 1:1000) with hTERT-RPE cell by Dr. Moshe Kim. Green: Septin 2. Blue: DNA. 1% PFA fixed.



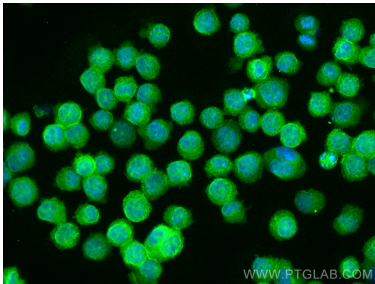
HEK-293 cells were subjected to SDS PAGE followed by western blot with 60075-1-Ig (Septin 2 Antibody) at various dilutions incubated at room temperature for 1.5 hours.



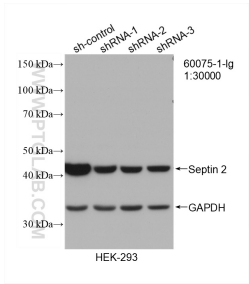
Immunohistochemical analysis of paraffin-embedded human renal cell carcinoma tissue slide using 60075-1-Ig (Septin 2 Antibody) at dilution of 1:800 (under 10x lens). Heat mediated antigen retrieval with Tris-EDTA buffer (pH 9.0).



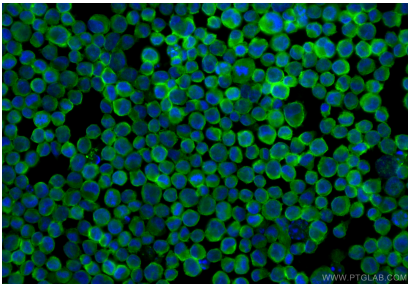
Immunohistochemical analysis of paraffin-embedded human renal cell carcinoma tissue slide using 60075-1-Ig (Septin 2 Antibody) at dilution of 1:800 (under 40x lens). Heat mediated antigen retrieval with Tris-EDTA buffer (pH 9.0).



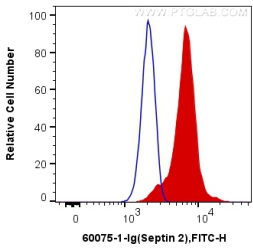
Immunofluorescent analysis of (4% PFA) fixed K-562 cells using Septin 2 antibody (60075-1-Ig, Clone: 2F3B2) at dilution of 1:800 and CoraLite®488-Conjugated AffiniPure Goat Anti-Mouse IgG(H+L).



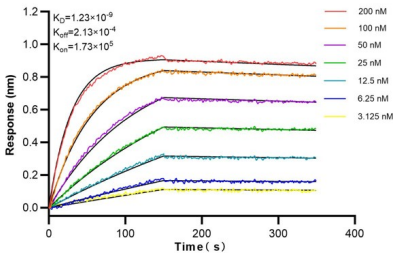
WB result of Septin 2 antibody (60075-1-Ig; 1:30000; incubated at room temperature for 1.5 hours) with sh-Control and sh-Septin 2 transfected HEK-293 cells.



Immunofluorescent analysis of (4% PFA) fixed K-562 cells using Septin 2 antibody (60075-1-Ig, Clone: 2F3B2) at dilution of 1:800 and CoraLite®488-Conjugated AffiniPure Goat Anti-Mouse IgG(H+L) (SA00013-1).



1X10⁶ K-562 cells were intracellularly stained with 0.4 ug Anti-Human Septin 2 (60075-1-Ig, Clone:2F3B2) and CoraLite®488-Conjugated AffiniPure Goat Anti-Mouse IgG(H+L) at dilution 1:1000 (red), or 0.4 ug Control Antibody. Cells were fixed with 4% PFA and permeabilized with Flow Cytometry Perm Buffer (PF00011-C).



Biolayer interferometry (BLI) kinetic assays of 60075-1-Ig against Human SEPT2 were performed. The Affinity Constant is 1.23 nM.