

For Research Use Only

# Neuropilin 1/CD304 Monoclonal antibody, PBS Only (Capture)

Catalog Number: 60067-1-PBS

Featured Product



## Basic Information

Catalog Number:

60067-1-PBS

Concentration:

1 mg/ml

Source:

Mouse

Isotype:

IgG1

Immunogen Catalog Number:

AG0931

GenBank Accession Number:

BC007737

GeneID (NCBI):

8829

UNIPROT ID:

O14786

Full Name:

neuropilin 1

Calculated MW:

103 kDa

Observed MW:

130 kDa

Purification Method:

Protein A purification

CloneNo.:

2H3F6

## Applications

Tested Applications:

WB, IF/ICC, Cytometric bead array, Indirect ELISA

Species Specificity:

human, pig, rabbit

## Background Information

Neuropilin-1 (NRP1) is a 130-140 kDa transmembrane glycoprotein expressed by endothelial, dendritic, and regulatory T cells, as well as several other normal cell types and malignant tumor cells. NRP1 was first identified as a semaphorin (SEMA) receptor, involved in axonal guidance in embryonic development. NRP1 was also shown to act as a receptor for vascular endothelial growth factor (VEGF) and a promoter of angiogenesis through its interaction with VEGF-A165 (and other VEGFs) and the receptor tyrosine kinase (RTK) VEGF-R2. NRP1 plays versatile roles in angiogenesis, axon guidance, cell survival, migration, and invasion.

## Storage

Storage:

Store at -80°C.

The product is shipped with ice packs. Upon receipt, store it immediately at -80°C

Storage Buffer:

PBS only, pH7.3

For technical support and original validation data for this product please contact:

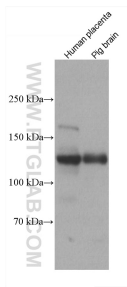
T: 4006900926

E: [Proteintech-CN@ptglab.com](mailto:Proteintech-CN@ptglab.com)

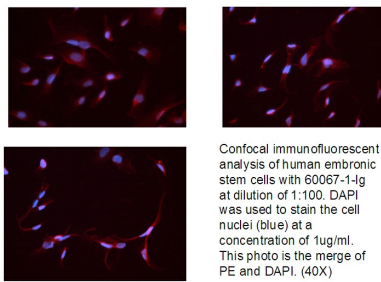
W: [ptgcn.com](http://ptgcn.com)

This product is exclusively available under Proteintech Group brand and is not available to purchase from any other manufacturer.

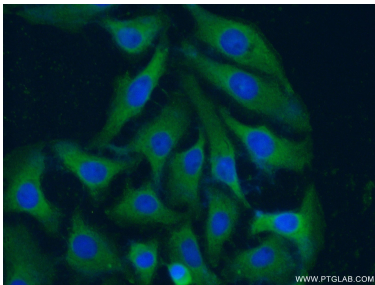
## Selected Validation Data



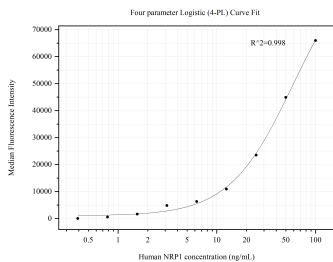
Various lysates were subjected to SDS PAGE followed by western blot with 60067-1-Ig (Neuropilin 1 antibody) at dilution of 1:3000 incubated at room temperature for 1.5 hours. This data was developed using the same antibody clone with 60067-1-PBS in a different storage buffer formulation.



Confocal immunofluorescent analysis of human embryonic stem cells with 60067-1-Ig at dilution of 1:100. DAPI was used to stain the cell nuclei (blue) at a concentration of 1ug/ml. This photo is the merge of PE and DAPI. (40X). This data was developed using the same antibody clone with 60067-1-PBS in a different storage buffer formulation.



Immunofluorescent analysis of (-20°C Ethanol ) fixed SH-SY5Y cells using 60067-1-Ig(Neuropilin 1 antibody) at dilution of 1:100 and Alexa Fluor 488-conjugated AffiniPure Goat Anti-Mouse IgG(H+L). This data was developed using the same antibody clone with 60067-1-PBS in a different storage buffer formulation.



Cytometric bead array standard curve of MP50479-1, NRP1 Monoclonal Matched Antibody Pair, PBS Only. Capture antibody: 60067-1-PBS. Detection antibody: 60067-2-PBS. Standard:Ag0931. Range: 0.391-100 ng/mL.