

For Research Use Only

# GRP94 Monoclonal antibody

Catalog Number: 60012-1-Ig 8 Publications



## Basic Information

|  |   |  |
|--|---|--|
| <b>Catalog Number:</b><br>60012-1-Ig       | <b>GenBank Accession Number:</b><br>BC009195                            | <b>Purification Method:</b><br>Caprylic Acid-Ammonium Sulfate<br>Precipitation             |
| <b>Concentration:</b><br>1000 µg/ml        | <b>GeneID (NCBI):</b><br>7184   | <b>CloneNo.:</b><br>1H10B7   |
| <b>Source:</b><br>Mouse                    | <b>UNIPROT ID:</b><br>P14625  | <b>Recommended Dilutions:</b><br>WB: 1:500-1:2000<br>IHC: 1:50-1:500<br>IF/ICC: 1:50-1:500 |
| <b>Isotype:</b><br>IgM                     | <b>Full Name:</b><br>heat shock protein 90kDa beta<br>(Grp94), member 1 |  |
| <b>Immunogen Catalog Number:</b><br>AG1439 | <b>Calculated MW:</b><br>96 kDa   |  |
|  | <b>Observed MW:</b><br>95 kDa   |  |

## Applications

|  |   |
|--|---|
| <b>Tested Applications:</b><br>WB, IF, IHC, ELISA  | <b>Positive Controls:</b><br><br>WB : Human heart, human heart tissue, human liver<br>tissue, human lung tissue, NIH/3T3 cells, RAW 264.7<br>cells, ROS1728 cells |
| <b>Cited Applications:</b><br>WB, ColP   | <b>IHC :</b> human lung cancer tissue, human breast cancer<br>tissue  |
| <b>Species Specificity:</b><br>human, mouse, rat   | <b>IF/ICC :</b> HepG2 cells, Hela cells, MCF-7 cells  |
| <b>Cited Species:</b><br>human, mouse, rat   |   |
| <b>Note-IHC: suggested antigen retrieval with<br/>TE buffer pH 9.0; (*) Alternatively, antigen<br/>retrieval may be performed with citrate<br/>buffer pH 6.0</b> |   |

## Background Information

HSP90 proteins are highly conserved molecular chaperones, which normally associate with other cochaperones and play important roles in folding newly synthesized proteins or stabilizing and refolding denatured proteins after stress. HSP90B1 (GP96 or GRP94) is an endoplasmic reticulum paralogue of the cytosolic HSP90. As a major ER chaperone to mediate the UPR and a master chaperone for Toll-like receptors (TLRs), HSP90b1 chaperones peptides to MHC class I molecules of dendritic cells and other antigen-presenting cells, as well as facilitating the assembly of immunoglobulin. The protein is also involved in many other bio-processes. This antibody was generated against the N-terminal region of full-length HSP90b1.

## Notable Publications

| Author             | Pubmed ID | Journal             | Application |
|--------------------|-----------|---------------------|-------------|
| Raul Chavez-Valdez | 30971945  | Front Physiol       |             |
| Wenfei Xia         | 34249903  | Front Cell Dev Biol | WB          |
| Xin-Yang Li        | 33133686  | J Adv Res           | WB          |

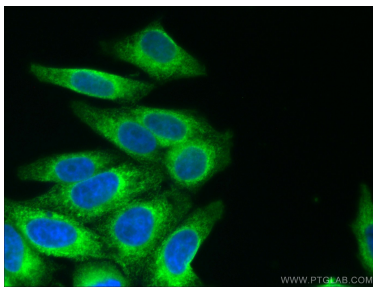
## Storage

**Storage:**  
Store at -20°C. Stable for one year after shipment.  
**Storage Buffer:**  
PBS with 0.02% sodium azide and 50% glycerol, pH7.3  
Aliquoting is unnecessary for -20°C storage

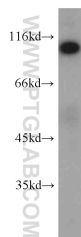
For technical support and original validation data for this product please contact:  
T: 4006900926 E: Proteintech-CN@ptglab.com W: ptgcn.com

This product is exclusively available under Proteintech Group brand and is not available to purchase from any other manufacturer.

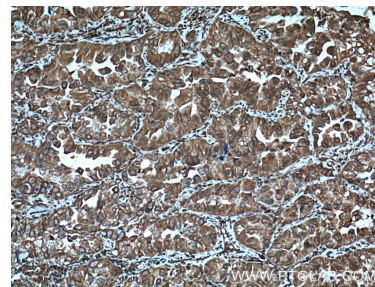
## Selected Validation Data



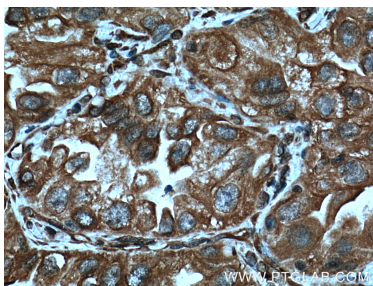
Immunofluorescent analysis of (4% PFA) fixed HepG2 cells using 60012-1-Ig (GRP94 antibody) at dilution of 1:200 and CoraLite488-Conjugated Goat Anti-Mouse IgG(H+L).



human heart tissue were subjected to SDS PAGE followed by western blot with 60012-1-Ig (HSP90B1 antibody) at dilution of 1:1000 incubated at room temperature for 1.5 hours.



Immunohistochemical analysis of paraffin-embedded human lung cancer tissue slide using 60012-1-Ig (GRP94 Antibody) at dilution of 1:200 (under 10x lens). Heat mediated antigen retrieval with Tris-EDTA buffer (pH 9.0).



Immunohistochemical analysis of paraffin-embedded human lung cancer tissue slide using 60012-1-Ig (GRP94 Antibody) at dilution of 1:200 (under 40x lens). Heat mediated antigen retrieval with Tris-EDTA buffer (pH 9.0).