

For Research Use Only

# CD38 Monoclonal antibody

Catalog Number: 60006-1-Ig

Featured Product

19 Publications



## Basic Information

Catalog Number:

60006-1-Ig

Concentration:

1000 ug/ml

Source:

Mouse

Isotype:

IgG1

Immunogen Catalog Number:

AG0487

GenBank Accession Number:

BC007964

GeneID (NCBI):

952

ENSEMBL Gene ID:

ENSG00000004468

UNIPROT ID:

P28907

Full Name:

CD38 molecule

Calculated MW:

300 aa, 34 kDa

Observed MW:

45 kDa

Purification Method:

Protein G purification

CloneNo.:

3C6G4

Recommended Dilutions:

WB: 1:2000-1:10000

IF-P: 1:200-1:800

IF/ICC: 1:400-1:1600

## Applications

Tested Applications:

WB, IF/ICC, IF-P, ELISA

Cited Applications:

WB, IF, Cell treatment

Species Specificity:

human, mouse

Cited Species:

human, mouse, rat

Positive Controls:

WB: A549 cells, Daudi cells, Jurkat cells, NK-92 cells, THP-1 cells, Ramos cells, Raji cells, TF-1 cells

IF-P: mouse spleen tissue,

IF/ICC: Raji cells,

## Background Information

CD38, also known as ADP-ribosyl cyclase 1, is a type II transmembrane glycoprotein with a short N-terminal cytoplasmic tail, a single membrane-spanning domain, and a C-terminal extracellular region with four N-glycosylation sites (PMID: 2319135). The extracellular domain of CD38 has bifunctional enzyme activities that catalyze synthesis of cyclic ADP ribose from nicotinamide adenine dinucleotide (NAD) and hydrolysis of cyclic ADP ribose to adenosine diphosphoribose (PMID: 10636863). CD38 is expressed on a variety of hematopoietic and non-hematopoietic cells and is involved in diverse processes such as generation of calcium-mobilizing metabolites, cell activation, and chemotaxis (PMID: 25938500).

## Notable Publications

Author	Pubmed ID	Journal	Application
Teresa W-M Fan	36150727	J Immunol	
Yun Wang	32460411	Glia	WB
Huiwen Zheng	35594870	Cell Rep	IF

## Storage

Storage:

Store at -20°C. Stable for one year after shipment.

Storage Buffer:

PBS with 0.02% sodium azide and 50% glycerol, pH7.3

Aliquoting is unnecessary for -20°C storage

For technical support and original validation data for this product please contact:

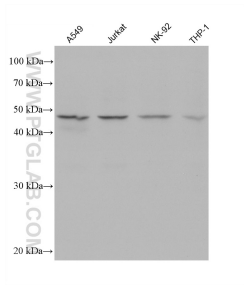
T: 4006900926

E: [Proteintech-CN@ptglab.com](mailto:Proteintech-CN@ptglab.com)

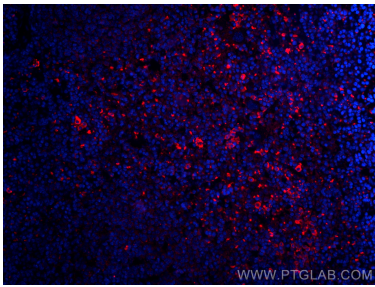
W: [ptgcn.com](http://ptgcn.com)

This product is exclusively available under Proteintech Group brand and is not available to purchase from any other manufacturer.

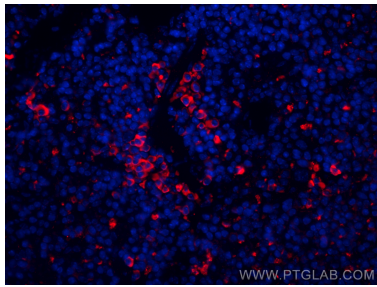
Selected Validation Data



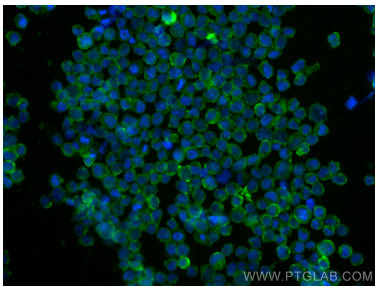
Various lysates were subjected to SDS PAGE followed by western blot with 60006-1-Ig (CD38 antibody) at dilution of 1:5000 incubated at room temperature for 1.5 hours.



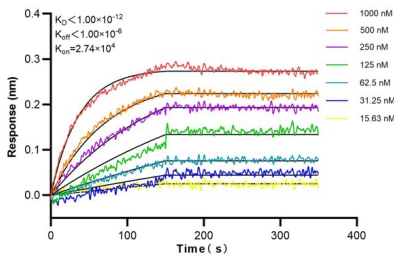
Immunofluorescent analysis of (4% PFA) fixed paraffin-embedded mouse spleen tissue using CD38 antibody (60006-1-Ig, Clone: 3C6G4 ) at dilution of 1:400 and CoraLite®594-Conjugated AffiniPure Goat Anti-Mouse IgG(H+L) (SA00013-3). Heat mediated antigen retrieval with Tris-EDTA buffer (pH 9.0).



Immunofluorescent analysis of (4% PFA) fixed paraffin-embedded mouse spleen tissue using CD38 antibody (60006-1-Ig, Clone: 3C6G4 ) at dilution of 1:400 and CoraLite®594-Conjugated AffiniPure Goat Anti-Mouse IgG(H+L) (SA00013-3). Heat mediated antigen retrieval with Tris-EDTA buffer (pH 9.0).



Immunofluorescent analysis of (4% PFA) fixed Raji cells using CD38 antibody (60006-1-Ig, Clone: 3C6G4 ) at dilution of 1:800 and CoraLite®488-Conjugated Goat Anti-Mouse IgG(H+L) (SA00013-1).



Biolayer interferometry (BLI) kinetic assays of 60006-1-Ig against Human CD38 were performed. The affinity constant is below 1 pM.