

For Research Use Only

SMURF1 Polyclonal antibody

Catalog Number: 55175-1-AP

Featured Product

16 Publications



Basic Information

Catalog Number:

55175-1-AP

Concentration:

600 ug/ml

Source:

Rabbit

Isotype:

IgG

GenBank Accession Number:

NM_020429

GeneID (NCBI):

57154

UNIPROT ID:

Q9HCE7

Full Name:

SMAD specific E3 ubiquitin protein
ligase 1

Calculated MW:

86 kDa

Observed MW:

90-100 kDa

Purification Method:

Antigen affinity purification

Recommended Dilutions:

WB: 1:1000-1:4000

IHC: 1:20-1:200

IF-P: 1:50-1:500

Applications

Tested Applications:

WB, IHC, IF-P, ELISA

Cited Applications:

WB, IHC, IF, IP, CoIP

Species Specificity:

human, mouse, rat

Cited Species:

human, mouse, rat

**Note-IHC: suggested antigen retrieval with
TE buffer pH 9.0; (*) Alternatively, antigen
retrieval may be performed with citrate
buffer pH 6.0**

Positive Controls:

WB : mouse brain tissue, mouse testis tissue

IHC : human colon cancer tissue,

IF-P : mouse kidney tissue, mouse spleen tissue

Background Information

SMURF1, also named as KIAA1625, is E3 ubiquitin-protein ligase which accepts ubiquitin from an E2 ubiquitin-conjugating enzyme in the form of a thioester and then directly transfers the ubiquitin to targeted substrates. SMURF1 interacts with receptor-regulated SMADs specific for the BMP pathway, SMAD1 and SMAD5, in order to trigger their ubiquitination and degradation and hence their inactivation. The antibody is specific to SMURF1. SMURF1 can be detected as 90-100 kDa when ubiquitinated (PMID:17576816, PMID:20484049).

Notable Publications

Author	Pubmed ID	Journal	Application
Junqing Liu	33193708	Front Genet	WB
Ling Guo	31578224	J Cell Biol	
Yunmeng Bian	33842583	Ann Transl Med	IHC

Storage

Storage:

Store at -20°C. Stable for one year after shipment.

Storage Buffer:

PBS with 0.02% sodium azide and 50% glycerol, pH7.3

Aliquoting is unnecessary for -20°C storage

For technical support and original validation data for this product please contact:

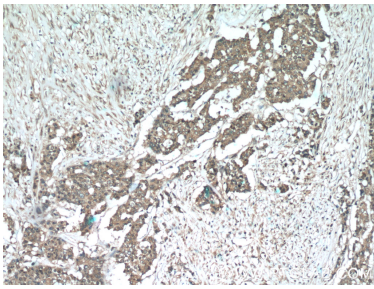
T: 4006900926

E: Proteintech-CN@ptglab.com

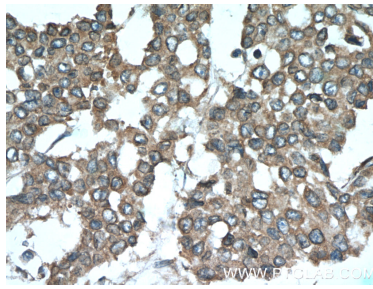
W: ptgcn.com

This product is exclusively available under Proteintech Group brand and is not available to purchase from any other manufacturer.

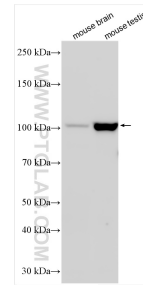
Selected Validation Data



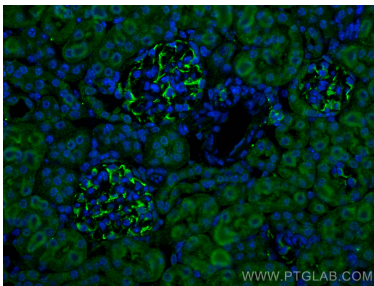
Immunohistochemical analysis of paraffin-embedded human colon cancer tissue slide using 55175-1-AP (SMURF1 Antibody) at dilution of 1:50 (under 10x lens).



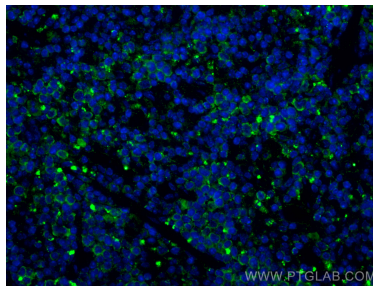
Immunohistochemical analysis of paraffin-embedded human colon cancer tissue slide using 55175-1-AP (SMURF1 Antibody) at dilution of 1:50 (under 40x lens).



Various lysates were subjected to SDS PAGE followed by western blot with 55175-1-AP (SMURF1 antibody) at dilution of 1:2000 incubated at room temperature for 1.5 hours.



Immunofluorescent analysis of (4% PFA) fixed paraffin-embedded mouse kidney tissue using SMURF1 antibody (55175-1-AP) at dilution of 1:200 and CoraLite®488-Conjugated AffiniPure Goat Anti-Rabbit IgG(H+L) (SA00013-2). Heat mediated antigen retrieval with Tris-EDTA buffer (pH 9.0).



Immunofluorescent analysis of (4% PFA) fixed paraffin-embedded mouse spleen tissue using SMURF1 antibody (55175-1-AP) at dilution of 1:200 and CoraLite®488-Conjugated AffiniPure Goat Anti-Rabbit IgG(H+L) (SA00013-2). Heat mediated antigen retrieval with Tris-EDTA buffer (pH 9.0).