

For Research Use Only

# RPGRIP1L Polyclonal antibody

Catalog Number: 55160-1-AP

Featured Product

26 Publications



## Basic Information

### Catalog Number:

55160-1-AP

### Concentration:

450 µg/ml

### Source:

Rabbit

### Isotype:

IgG

### GenBank Accession Number:

NM\_015272

### GeneID (NCBI):

23322

### UNIPROT ID:

Q68CZ1

### Full Name:

RPGRIP1-like

### Calculated MW:

151 kDa

### Purification Method:

Antigen affinity purification

### Recommended Dilutions:

WB: 1:500-1:2000

IP: 0.5-4.0 µg for 1.0-3.0 mg of total protein lysate

IHC: 1:50-1:500

## Applications

### Tested Applications:

WB, IP, IHC, ELISA

### Cited Applications:

WB, IHC, CoIP

### Species Specificity:

human

### Cited Species:

human, mouse, canine, zebrafish

### Positive Controls:

WB: HEK-293 cells, human kidney tissue

IP: HEK-293 cells,

IHC: human pancreas tissue, human brain tissue

**Note-IHC: suggested antigen retrieval with TE buffer pH 9.0; (\*) Alternatively, antigen retrieval may be performed with citrate buffer pH 6.0**

## Background Information

RPGRIP1L, also named as FTM, KIAA1005, belongs to the RPGRIP1 family. It negatively regulates signaling through the G-protein coupled thromboxane A2 receptor. RPGRIP1L may be involved in mechanisms like programmed cell death, craniofacial development, patterning of the limbs, and formation of the left-right axis. (PMID:17558409) Defects in RPGRIP1L are the cause of Joubert syndrome type 7 (JBTS7). Defects in RPGRIP1L are the cause of Meckel syndrome type 5 (MKS5). This antibody is specific to RPGRIP1L.

## Notable Publications

Author	Pubmed ID	Journal	Application
Philipp P Prosseda	28871046	J Cell Sci	
Caroline Shak	36268591	J Cell Sci	WB
Laura Vuolo	30320547	Elife	

## Storage

### Storage:

Store at -20°C. Stable for one year after shipment.

### Storage Buffer:

PBS with 0.02% sodium azide and 50% glycerol, pH7.3

Aliquoting is unnecessary for -20°C storage

For technical support and original validation data for this product please contact:

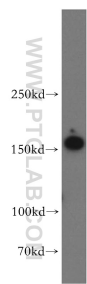
T: 4006900926

E: [Proteintech-CN@ptglab.com](mailto:Proteintech-CN@ptglab.com)

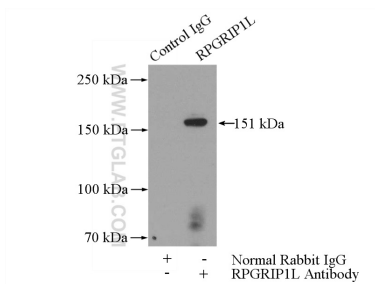
W: [ptgcn.com](http://ptgcn.com)

This product is exclusively available under Proteintech Group brand and is not available to purchase from any other manufacturer.

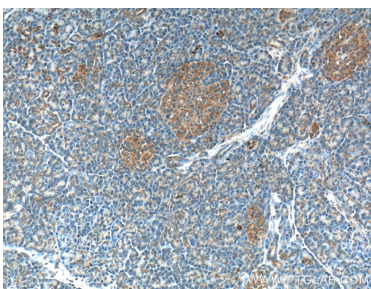
Selected Validation Data



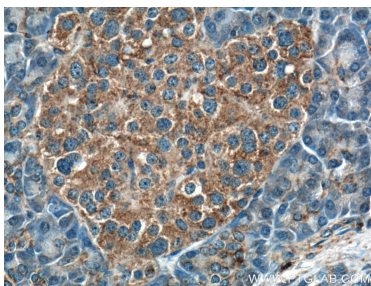
HEK-293 cells were subjected to SDS PAGE followed by western blot with 55160-1-AP (RPGRIP1L antibody) at dilution of 1:800 incubated at room temperature for 1.5 hours.



IP result of anti-RPGRIP1L (IP:55160-1-AP, 4ug; Detection:55160-1-AP 1:700) with HEK-293 cells lysate 3200ug.



Immunohistochemical analysis of paraffin-embedded human pancreas tissue slide using 55160-1-AP (RPGRIP1L antibody) at dilution of 1:200 (under 10x lens).



Immunohistochemical analysis of paraffin-embedded human pancreas tissue slide using 55160-1-AP (RPGRIP1L antibody) at dilution of 1:200 (under 40x lens).