

For Research Use Only

# DRD2 Polyclonal antibody

Catalog Number: 55084-1-AP

Featured Product

45 Publications



## Basic Information

### Catalog Number:

55084-1-AP

### Concentration:

550 ug/ml

### Source:

Rabbit

### Isotype:

IgG

### GenBank Accession Number:

NM\_016574

### GeneID (NCBI):

1813

### UNIPROT ID:

P14416

### Full Name:

dopamine receptor D2

### Calculated MW:

51 kDa

### Observed MW:

50-60 kDa

### Purification Method:

Antigen affinity purification

### Recommended Dilutions:

WB: 1:1000-1:4000

IP: 0.5-4.0 ug for 1.0-3.0 mg of total protein lysate

IF-P: 1:50-1:500

IF-Fro: 1:50-1:500

## Applications

### Tested Applications:

WB, IF-P, IF-Fro, IP, ELISA

### Cited Applications:

WB, IHC, IF

### Species Specificity:

human, mouse

### Cited Species:

human, mouse, rat

### Positive Controls:

WB : HEK-293 cells, mouse brain tissue, SH-SY5Y cells, rat brain tissue

IP : SH-SY5Y cells,

IF-P : mouse brain tissue,

IF-Fro : mouse brain tissue,

## Background Information

DRD2, also named D2DR and D2R, belongs to the G-protein coupled receptor 1 family. It is one of the five types (D1 to D5) of receptors for dopamine. The activity of DRD2 is mediated by G proteins which inhibit adenylyl cyclase. Defects in DRD2 are associated with dystonia type 11 (DYT11). The antibody is specific to DRD2.

## Notable Publications

Author	Pubmed ID	Journal	Application
Subramaniam Jayanthi	36077488	Int J Mol Sci	WB
Qing Han	36288554	Endocrinology	WB
Youjun Yang	36279723	Biomed Pharmacother	IHC

## Storage

### Storage:

Store at -20°C. Stable for one year after shipment.

### Storage Buffer:

PBS with 0.02% sodium azide and 50% glycerol, pH7.3

Aliquoting is unnecessary for -20°C storage

For technical support and original validation data for this product please contact:

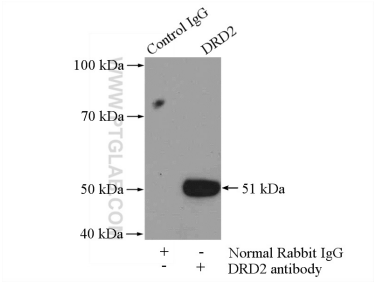
T: 4006900926

E: [Proteintech-CN@ptglab.com](mailto:Proteintech-CN@ptglab.com)

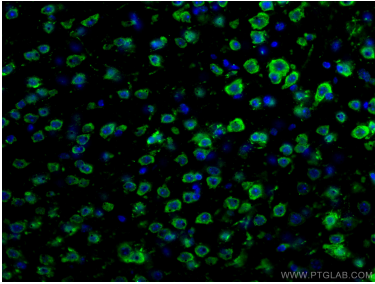
W: [ptgcn.com](http://ptgcn.com)

This product is exclusively available under Proteintech Group brand and is not available to purchase from any other manufacturer.

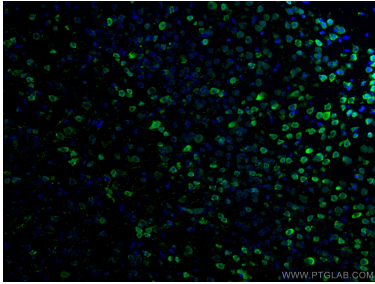
Selected Validation Data



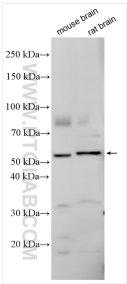
IP result of anti-DRD2 (IP:55084-1-AP, 4ug; Detection:55084-1-AP 1:300) with SH-SY5Y cells lysate 3000ug.



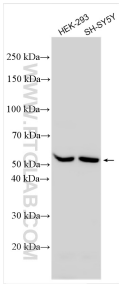
Immunofluorescent analysis of (4% PFA) fixed mouse brain tissue using DRD2 antibody (55084-1-AP) at dilution of 1:200 and CoraLite®488-Conjugated AffiniPure Goat Anti-Rabbit IgG(H+L).



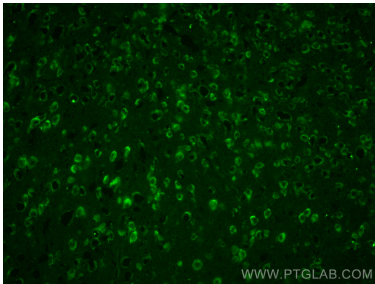
Immunofluorescent analysis of (4% PFA) fixed mouse brain tissue using DRD2 antibody (55084-1-AP) at dilution of 1:200 and CoraLite®488-Conjugated AffiniPure Goat Anti-Rabbit IgG(H+L).



Various lysates were subjected to SDS PAGE followed by western blot with 55084-1-AP (DRD2 antibody) at dilution of 1:2000 incubated at room temperature for 1.5 hours.



Various lysates were subjected to SDS PAGE followed by western blot with 55084-1-AP (DRD2 antibody) at dilution of 1:2000 incubated at room temperature for 1.5 hours.



Immunofluorescent analysis of (4% PFA) fixed frozen OCT-embedded mouse brain tissue using 55084-1-AP (DRD2 antibody) at dilution of 1:200 and CoraLite®488-Conjugated AffiniPure Goat Anti-Rabbit IgG(H+L).