

For Research Use Only

SOS1 Polyclonal antibody

Catalog Number: 55041-1-AP

6 Publications



Basic Information

Catalog Number:

55041-1-AP

Concentration:

1200 µg/ml

Source:

Rabbit

Isotype:

IgG

GenBank Accession Number:

NM_005633

GeneID (NCBI):

6654

UNIPROT ID:

Q07889

Full Name:

son of sevenless homolog 1
(Drosophila)

Calculated MW:

152 kDa

Observed MW:

152 kDa

Purification Method:

Antigen affinity purification

Recommended Dilutions:

WB: 1:500-1:2000

IP: 0.5-4.0 µg for 1.0-3.0 mg of total
protein lysate

IHC: 1:50-1:500

IF/ICC: 1:50-1:500

Applications

Tested Applications:

WB, IHC, IF/ICC, IP, ELISA

Cited Applications:

WB, IF

Species Specificity:

human, mouse, rat

Cited Species:

human

**Note-IHC: suggested antigen retrieval with
TE buffer pH 9.0; (*) Alternatively, antigen
retrieval may be performed with citrate
buffer pH 6.0**

Positive Controls:

WB : K-562 cells, mouse brain tissue, THP-1 cells,
SKOV-3 cells

IP : mouse brain tissue,

IHC : mouse colon tissue, human lung cancer tissue

IF/ICC : HeLa cells,

Background Information

SOS1 promotes the exchange of Ras-bound GDP by GTP. EPS8, E3B1 and SOS1 form a tricomplex in vivo that exhibits RAC-specific guanine nucleotide exchange factor activity in vitro. Defects in SOS1 are the cause of gingival fibromatosis 1 (GGF1). Defects in SOS1 are the cause of Noonan syndrome type 4 (NS4). The antibody is specific to SOS1.

Notable Publications

Author	Pubmed ID	Journal	Application
Damian Kolat	35563688	Cells	WB
Wuping Yang	40089779	J Transl Med	WB
Xinwen Wang	39563492	Adv Sci (Weinh)	WB,IF

Storage

Storage:

Store at -20°C. Stable for one year after shipment.

Storage Buffer:

PBS with 0.02% sodium azide and 50% glycerol, pH7.3

Aliquoting is unnecessary for -20°C storage

For technical support and original validation data for this product please contact:

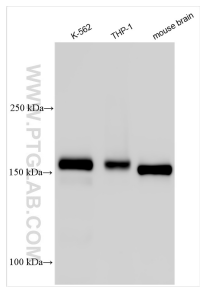
T: 4006900926

E: Proteintech-CN@ptglab.com

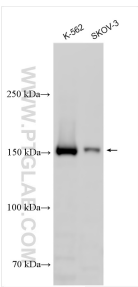
W: ptgcn.com

This product is exclusively available under Proteintech Group brand and is not available to purchase from any other manufacturer.

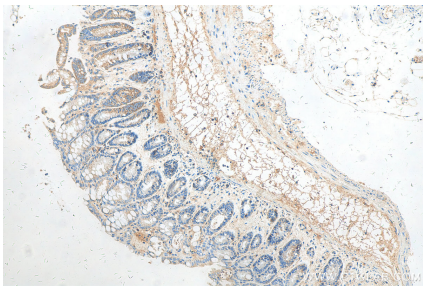
Selected Validation Data



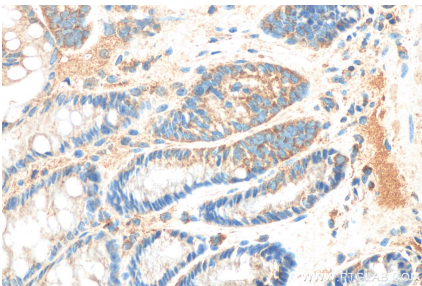
IP result of anti-SOS1 (IP:55041-1-AP, 4ug; Detection:55041-1-AP 1:500) with mouse brain tissue lysate 4000ug.



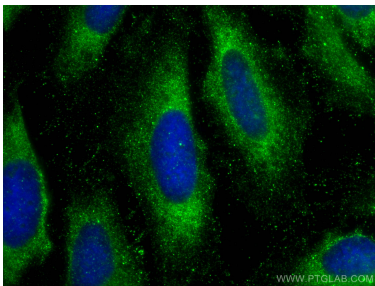
Various lysates were subjected to SDS PAGE followed by western blot with 55041-1-AP (SOS1 antibody) at dilution of 1:500 incubated at room temperature for 1.5 hours.



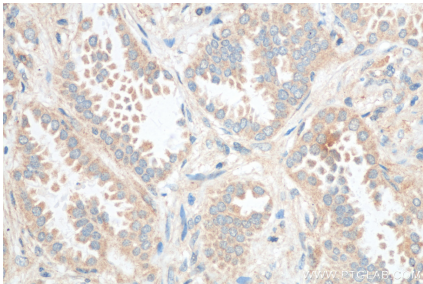
Immunohistochemical analysis of paraffin-embedded mouse colon tissue slide using 55041-1-AP (SOS1 antibody) at dilution of 1:200 (under 10x lens). Heat mediated antigen retrieval with Tris-EDTA buffer (pH 9.0).



Immunohistochemical analysis of paraffin-embedded mouse colon tissue slide using 55041-1-AP (SOS1 antibody) at dilution of 1:200 (under 40x lens). Heat mediated antigen retrieval with Tris-EDTA buffer (pH 9.0).



Immunofluorescent analysis of (-20°C Ethanol) fixed HeLa cells using SOS1 antibody (55041-1-AP) at dilution of 1:200 and CoraLite®488-Conjugated Goat Anti-Rabbit IgG(H+L).



Immunohistochemical analysis of paraffin-embedded human lung cancer tissue slide using 55041-1-AP (SOS1 antibody) at dilution of 1:200 (under 40x lens). Heat mediated antigen retrieval with Tris-EDTA buffer (pH 9.0).