

For Research Use Only

PFKM Polyclonal antibody

Catalog Number: 55028-1-AP

Featured Product

77 Publications



Basic Information

Catalog Number:

55028-1-AP

Concentration:

700 ug/ml

Source:

Rabbit

Isotype:

IgG

GenBank Accession Number:

NM_000289

GeneID (NCBI):

5213

UNIPROT ID:

P08237

Full Name:

phosphofructokinase, muscle

Calculated MW:

85 kDa

Observed MW:

75-85 kDa

Purification Method:

Antigen affinity purification

Recommended Dilutions:

WB: 1:2000-1:16000

IP: 0.5-4.0 ug for 1.0-3.0 mg of total protein lysate

IHC: 1:500-1:2000

IF/ICC: 1:200-1:800

Applications

Tested Applications:

WB, IHC, IF/ICC, IP, ELISA

Cited Applications:

WB, IHC, IF, IP

Species Specificity:

human, mouse, rat

Cited Species:

human, mouse, rat, pig, chicken, bovine, sheep

Note-IHC: suggested antigen retrieval with TE buffer pH 9.0; (*) Alternatively, antigen retrieval may be performed with citrate buffer pH 6.0

Positive Controls:

WB : HeLa cells, HEK-293 cells, HepG2 cells, human brain tissue, human skeletal muscle tissue, L02 cells, mouse heart tissue, rat heart tissue

IP : mouse heart tissue, mouse liver tissue

IHC : mouse skeletal muscle tissue, human skeletal muscle tissue

IF/ICC : HeLa cells,

Background Information

PFKM, also named as GSD7, PFK-1, PFK-M and PFKX, belongs to the phosphofructokinase family and two domains subfamily. PFKM catalyzes the reaction: ATP + D-fructose 6-phosphate = ADP + D-fructose 1,6-bisphosphate. It is a key regulatory enzyme in glycolysis. Defects in PFKM are the cause of glycogen storage disease type 7 (GSD7). PFKM has three isoforms with molecular masses of 85, 82 and 93 kDa. The antibody is specific to PFKM.

Notable Publications

Author	Pubmed ID	Journal	Application
Wei Xu	32935679	Food Funct	WB
Yanling Gou	36069580	Immunology	IHC
Yu Zhu	36052731	ACS Appl Mater Interfaces	WB

Storage

Storage:

Store at -20°C. Stable for one year after shipment.

Storage Buffer:

PBS with 0.02% sodium azide and 50% glycerol, pH7.3

Aliquoting is unnecessary for -20°C storage

For technical support and original validation data for this product please contact:

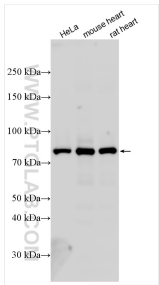
T: 4006900926

E: Proteintech-CN@ptglab.com

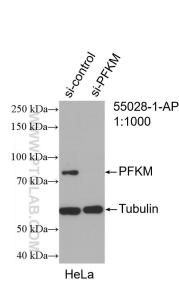
W: ptgcn.com

This product is exclusively available under Proteintech Group brand and is not available to purchase from any other manufacturer.

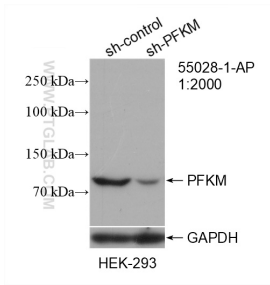
Selected Validation Data



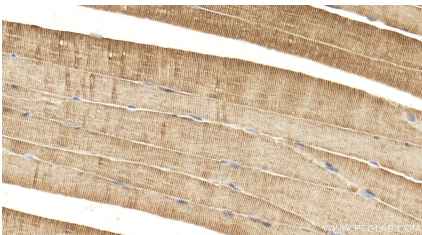
Various lysates were subjected to SDS PAGE followed by western blot with 55028-1-AP (PFKM antibody) at dilution of 1:8000 incubated at room temperature for 1.5 hours.



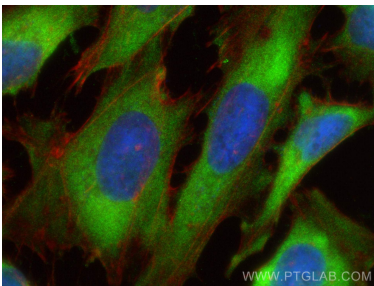
WB result of PFKM antibody (55028-1-AP; 1:1000; incubated at room temperature for 1.5 hours) with sh-Control and sh-PFKM transfected HeLa cells.



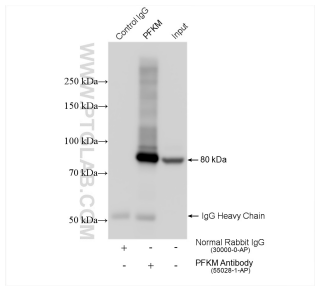
WB result of PFKM antibody (55028-1-AP; 1:2000; incubated at room temperature for 1.5 hours) with sh-Control and sh-PFKM transfected HEK-293 cells.



Immunohistochemical analysis of paraffin-embedded mouse skeletal muscle tissue slide using 55028-1-AP (PFKM antibody) at dilution of 1:1000 (under 40x lens). Heat mediated antigen retrieval with Tris-EDTA buffer (pH 9.0).



Immunofluorescent analysis of (-20°C Ethanol) fixed HeLa cells using PFKM antibody (55028-1-AP) at dilution of 1:400 and Multi-rAb Coralite ® Plus 488-Goat Anti-Rabbit Recombinant Secondary Antibody (H+L) (RGAR002), CL594-Phalloidin (red).



IP result of anti-PFKM (IP:55028-1-AP, 4ug; Detection:55028-1-AP 1:8000) with mouse heart tissue lysate 1680 ug.