

For Research Use Only

# GFP tag Polyclonal antibody

Catalog Number: 50430-2-AP

833 Publications



## Basic Information

Catalog Number:

50430-2-AP

Concentration:

1000 ug/ml

Source:

Rabbit

Isotype:

IgG

Immunogen Catalog Number:

AG2128

GenBank Accession Number:

M62653

GeneID (NCBI):

UNIPROT ID:

P42212

Full Name:

Calculated MW:

26 kDa

Purification Method:

Antigen affinity purification

Recommended Dilutions:

WB: 1:1000-1:4000

IP: 0.5-4.0 ug for 1.0-3.0 mg of total protein lysate

IF-P: 1:50-1:500

IF/ICC: 1:50-1:500

## Applications

Tested Applications:

WB, IF/ICC, IF-P, IP, ELISA

Cited Applications:

WB, IHC, IF, IP, CoIP, ChIP, RIP, IP-MS

Species Specificity:

aequorea victoria, recombinant protein

Cited Species:

mouse, rat, pig, canine, yeast, silkworm, escherichia coli

Positive Controls:

WB : recombinant protein, Transfected HEK-293 cells

IP : Transfected HEK-293T cells,

IF-P : transgenic mouse brain tissue,

IF/ICC : Transfected HEK-293 cells,

## Background Information

Green Fluorescent Proteins (GFPs) encompass a diverse range of proteins carrying a green chromophore, originating from various species and forming different protein lineages. Wildtype GFP consists of 238 amino acid residues (26.9 kDa). GFP was first identified in the jellyfish *Aequorea victoria*. It emits green light with a peak wavelength of 509 nm upon excitation by blue light at 395 nm. When fused with other proteins, GFP serves as a versatile reporter protein e.g. for quantifying expression levels or facilitates visualization of subcellular localization through fluorescence microscopy. This antibody is a rabbit polyclonal antibody, generated against the full-length eGFP protein. It exhibits reactivity towards variants of *Aequorea victoria* GFP, including S65T-GFP, RS-GFP, YFP, CFP, and eGFP.

## Notable Publications

| Author    | Pubmed ID | Journal            | Application |
|-----------|-----------|--------------------|-------------|
| Bin Li    | 28962583  | Stem Cell Res Ther | IF          |
| Chao Li   | 26317901  | Oncotarget         |             |
| Yuqi Zhai | 36168805  | Open Biol          | IP          |

## Storage

Storage:

Store at -20°C. Stable for one year after shipment.

Storage Buffer:

PBS with 0.02% sodium azide and 50% glycerol, pH7.3

Aliquoting is unnecessary for -20°C storage

For technical support and original validation data for this product please contact:

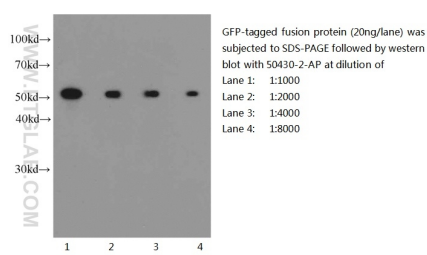
T: 4006900926

E: [Proteintech-CN@ptglab.com](mailto:Proteintech-CN@ptglab.com)

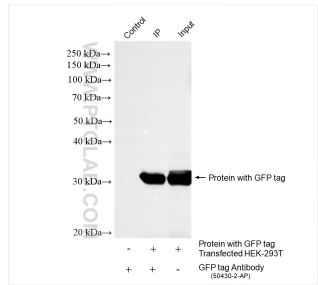
W: [ptgcn.com](http://ptgcn.com)

This product is exclusively available under Proteintech Group brand and is not available to purchase from any other manufacturer.

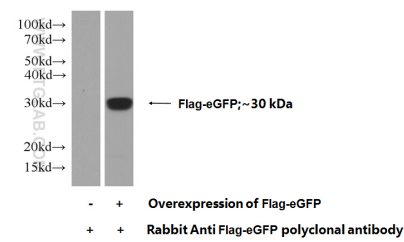
Selected Validation Data



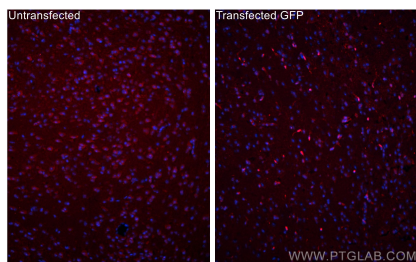
Western blot of eGFP-tagged fusion protein with anti-eGFP-tag (50430-2-AP) at various dilutions.



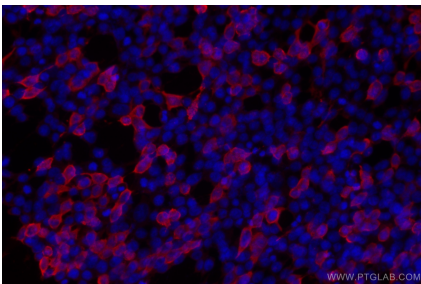
IP result of anti-GFP tag (IP:50430-2-AP, 4ug; Detection:50430-2-AP 1:10000) with Transfected HEK-293T cells lysate 400 ug.



Transfected HEK-293 cells were subjected to SDS PAGE followed by western blot with 50430-2-AP (GFP tag Antibody) at dilution of 1:1000 incubated at room temperature for 1.5 hours.



Immunofluorescent analysis of (4% PFA) fixed paraffin-embedded transgenic mouse brain tissue using GFP tag antibody (50430-2-AP) at dilution of 1:200 and CoraLite®594-Conjugated AffiniPure Goat Anti-Rabbit IgG(H+L) (SA00013-2). Heat mediated antigen retrieval with Tris-EDTA buffer (pH 9.0).



Immunofluorescent analysis of (-20°C Ethanol) fixed Transfected HEK-293 cells using GFP tag antibody (50430-2-AP) at dilution of 1:200 and CoraLite®594-Conjugated Goat Anti-Rabbit IgG(H+L) (SA00013-4).