

For Research Use Only

ATG16L1 Polyclonal antibody

Catalog Number: 29445-1-AP

9 Publications



Basic Information

Catalog Number:

29445-1-AP

Concentration:

1000 ug/ml

Source:

Rabbit

Isotype:

IgG

Immunogen Catalog Number:

AG31318

GenBank Accession Number:

BC000061

GeneID (NCBI):

55054

UNIPROT ID:

Q676U5

Full Name:

ATG16 autophagy related 16-like 1 (S. cerevisiae)

Calculated MW:

607 aa, 68 kDa

Observed MW:

68-75 kDa

Purification Method:

Antigen affinity purification

Recommended Dilutions:

WB: 1:1000-1:8000

IHC: 1:200-1:800

IF/ICC: 1:50-1:500

Applications

Tested Applications:

WB, IHC, IF/ICC, ELISA

Cited Applications:

WB, IHC, IF

Species Specificity:

human, mouse, rat

Cited Species:

human, mouse

Note-IHC: suggested antigen retrieval with TE buffer pH 9.0; (*) Alternatively, antigen retrieval may be performed with citrate buffer pH 6.0

Positive Controls:

WB : COLO 320 cells, HSC-T6 cells, HEK-293 cells, MCF-7 cells

IHC : human colon cancer tissue,

IF/ICC : HEK-293 cells,

Background Information

Human ATG16L1 is a 607 amino acid protein (~68 kDa) comprising three major domains: the N - terminal ATG5 binding domain (ATG5 - BD), the central coiled - coil domain (CCD) and a predicted C - terminal WD40 - domain. ATG16L1 α and β (Atg16L1 α , 66 kDa; and Atg16L1 β , 68 kDa) are the major isoforms expressed in intestinal epithelium and macrophages, and all isoforms encode exon 9, which contains Thr 300. Atg16L1 mediates the cellular degradative process of autophagy and is considered a critical regulator of inflammation based on its genetic association with inflammatory bowel disease. ATG16L1 has been implicated in Crohn's disease. (PMID: 24553140, PMID: 22740627, PMID: 28685931)

Notable Publications

Author	Pubmed ID	Journal	Application
Jian Fang	35297435	Food Funct	WB
Xiaoyi Zhang	35946506	Anticancer Drugs	WB
Hao Liu	40021040	Cancer Lett	WB

Storage

Storage:

Store at -20°C. Stable for one year after shipment.

Storage Buffer:

PBS with 0.02% sodium azide and 50% glycerol, pH7.3

Aliquoting is unnecessary for -20°C storage

For technical support and original validation data for this product please contact:

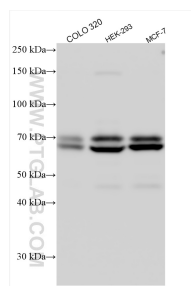
T: 4006900926

E: Proteintech-CN@ptglab.com

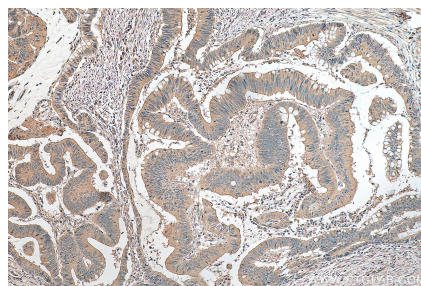
W: ptgcn.com

This product is exclusively available under Proteintech Group brand and is not available to purchase from any other manufacturer.

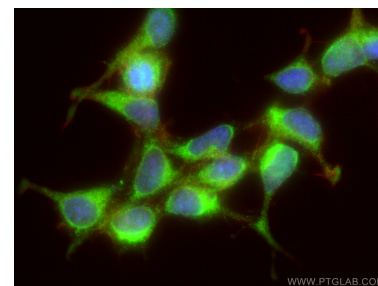
Selected Validation Data



Various lysates were subjected to SDS PAGE followed by western blot with 29445-1-AP (ATG16L1 antibody) at dilution of 1:4000 incubated at room temperature for 1.5 hours.



Immunohistochemical analysis of paraffin-embedded human colon cancer tissue slide using 29445-1-AP (ATG16L1 antibody) at dilution of 1:400 (under 10x lens). Heat mediated antigen retrieval with Tris-EDTA buffer (pH 9.0).



Immunofluorescent analysis of (-20°C Ethanol) fixed HEK-293 cells using ATG16L1 antibody (29445-1-AP) at dilution of 1:200 and CoraLite®488-Conjugated AffiniPure Goat Anti-Rabbit IgG(H+L), CL594-Phalloidin (red).