

For Research Use Only

RPL5 Polyclonal antibody

Catalog Number: 29092-1-AP

5 Publications



Basic Information

Catalog Number:

29092-1-AP

Concentration:

500 ug/ml

Source:

Rabbit

Isotype:

IgG

Immunogen Catalog Number:

AG30837

GenBank Accession Number:

BC109370

GeneID (NCBI):

6125

UNIPROT ID:

P46777

Full Name:

ribosomal protein L5

Observed MW:

34 kDa

Purification Method:

Antigen affinity purification

Recommended Dilutions:

WB: 1:500-1:1000

IHC: 1:200-1:800

IF/ICC: 1:50-1:500

Applications

Tested Applications:

WB, IHC, IF/ICC, ELISA

Cited Applications:

WB, IHC, RIP

Species Specificity:

human, monkey

Cited Species:

human

Note-IHC: suggested antigen retrieval with TE buffer pH 9.0; (*) Alternatively, antigen retrieval may be performed with citrate buffer pH 6.0

Positive Controls:

WB : COS-7 cells, MOLT-4 cells, PC-3 cells

IHC : human prostate cancer tissue,

IF/ICC : U-251 cells,

Background Information

The mammalian ribosome is a macromolecular assembly of 4 RNA species (rRNAs) and approximately 80 different proteins, including RPL5. RPL5 (ribosome protein L15) is required for rRNA maturation and formation of the 60S ribosomal subunits, and defects or mutation in RPL5 is the cause of DBA6.

Notable Publications

Author	Pubmed ID	Journal	Application
Koichi Ogami	36288708	Cell Rep	WB
Huahua Zhang	36384455	BMC Mol Cell Biol	WB
Chen Xie	40652043	Cell Death Differ	WB,RIP,IHC

Storage

Storage:

Store at -20°C. Stable for one year after shipment.

Storage Buffer:

PBS with 0.02% sodium azide and 50% glycerol, pH7.3

Aliquoting is unnecessary for -20°C storage

For technical support and original validation data for this product please contact:

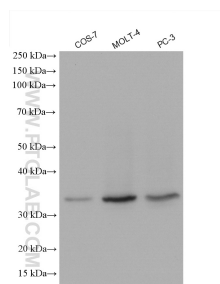
T: 4006900926

E: Proteintech-CN@ptglab.com

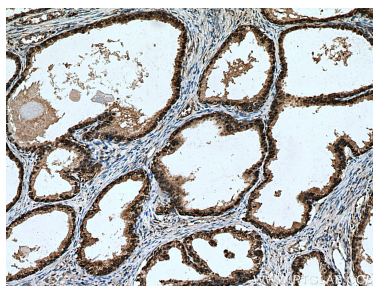
W: ptgcn.com

This product is exclusively available under Proteintech Group brand and is not available to purchase from any other manufacturer.

Selected Validation Data



Various lysates were subjected to SDS PAGE followed by western blot with 29092-1-AP (RPL5 antibody) at dilution of 1:600 incubated at room temperature for 1.5 hours.



Immunohistochemical analysis of paraffin-embedded human prostate cancer tissue slide using 29092-1-AP (RPL5 antibody) at dilution of 1:400 (under 10x lens). Heat mediated antigen retrieval with Tris-EDTA buffer (pH 9.0).



Immunofluorescent analysis of (4% PFA) fixed U-251 cells using RPL5 antibody (29092-1-AP) at dilution of 1:200 and CoraLite®488-Conjugated Goat Anti-Rabbit IgG(H+L) (SA00013-2), CL594-phalloidin (red).