

For Research Use Only

ATM Polyclonal antibody

Catalog Number: 27156-1-AP

Featured Product

43 Publications



Basic Information

Catalog Number:

27156-1-AP

Concentration:

650 µg/ml

Source:

Rabbit

Isotype:

IgG

Immunogen Catalog Number:

AG25909

GenBank Accession Number:

BC137169

GeneID (NCBI):

472

UNIPROT ID:

Q13315

Full Name:

ataxia telangiectasia mutated

Observed MW:

310-350 kDa

Purification Method:

Antigen affinity purification

Recommended Dilutions:

WB: 1:500-1:2000

IP: 0.5-4.0 µg for 1.0-3.0 mg of total protein lysate

IHC: 1:50-1:500

Applications

Tested Applications:

WB, IHC, IP, ELISA

Cited Applications:

WB, IHC, IF, ChIP

Species Specificity:

human

Cited Species:

human, mouse

Note-IHC: suggested antigen retrieval with TE buffer pH 9.0; (*) Alternatively, antigen retrieval may be performed with citrate buffer pH 6.0

Positive Controls:

WB : HEK-293 cells, HeLa cells, HepG2 cells

IP : HEK-293 cells,

IHC : human breast cancer tissue, human lung cancer tissue

Background Information

The ATM protein is a member of the phosphatidylinositol 3-kinase family of proteins that respond to DNA damage by phosphorylating key substrates involved in DNA repair and/or cell cycle control. It is involved in mitogenic signal transduction, meiotic recombination, detection of DNA damage, and cell cycle control.

Notable Publications

Author	Pubmed ID	Journal	Application
Xin Wen	36249018	Front Oncol	WB
Yang Liang	36175703	Med Oncol	WB
Jianqing Liang	33110215	Cell Death Differ	WB

Storage

Storage:

Store at -20°C. Stable for one year after shipment.

Storage Buffer:

PBS with 0.02% sodium azide and 50% glycerol, pH7.3

Aliquoting is unnecessary for -20°C storage

For technical support and original validation data for this product please contact:

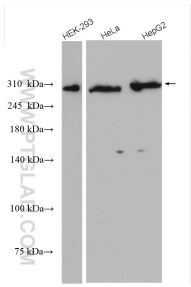
T: 4006900926

E: Proteintech-CN@ptglab.com

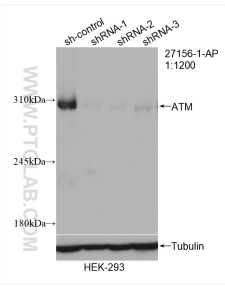
W: ptgcn.com

This product is exclusively available under Proteintech Group brand and is not available to purchase from any other manufacturer.

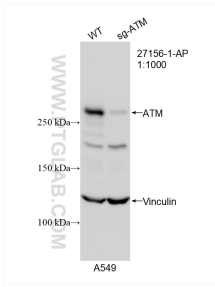
Selected Validation Data



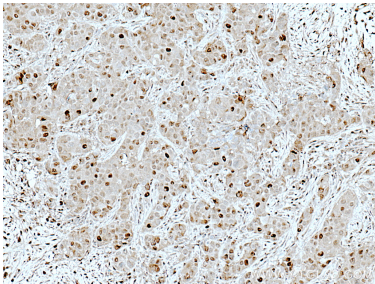
Various lysates were subjected to SDS PAGE followed by western blot with 27156-1-AP (ATM antibody) at dilution of 1:1000 incubated at room temperature for 1.5 hours.



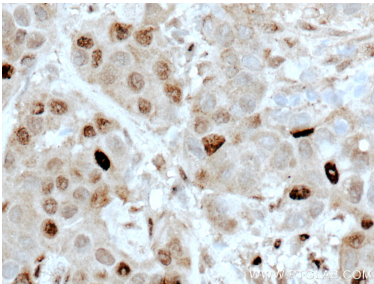
WB result of ATM antibody (27156-1-AP; 1:1200; incubated at room temperature for 1.5 hours) with sh-Control and sh-ATM transfected HEK-293 cells.



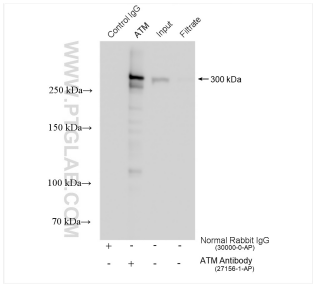
WB result of ATM antibody (27156-1-AP; 1:1000; room temperature for 1.5 hours) with wild-type and sg-ATM transfected A549 cells.



Immunohistochemical analysis of paraffin-embedded human breast cancer tissue slide using 27156-1-AP (ATM antibody) at dilution of 1:200 (under 10x lens. Heat mediated antigen retrieval with Tris-EDTA buffer (pH 9.0).



Immunohistochemical analysis of paraffin-embedded human breast cancer tissue slide using 27156-1-AP (ATM antibody) at dilution of 1:200 (under 40x lens. Heat mediated antigen retrieval with Tris-EDTA buffer (pH 9.0).



IP result of anti-ATM (IP:27156-1-AP, 4ug; Detection:27156-1-AP 1:800) with HEK-293 cells lysate 1480 ug.