

For Research Use Only

# RAF1 Polyclonal antibody

Catalog Number: 26863-1-AP

16 Publications



## Basic Information

Catalog Number:

26863-1-AP

Concentration:

900 ug/ml

Source:

Rabbit

Isotype:

IgG

Immunogen Catalog Number:

AG25423

GenBank Accession Number:

BC018119

GeneID (NCBI):

5894

UNIPROT ID:

P04049

Full Name:

v-raf-1 murine leukemia viral  
oncogene homolog 1

Calculated MW:

648 aa, 73 kDa

Observed MW:

70-75 kDa

Purification Method:

Antigen affinity purification

Recommended Dilutions:

WB: 1:500-1:2000

IHC: 1:600-1:2400

## Applications

Tested Applications:

WB, IHC, ELISA

Cited Applications:

WB, IF

Species Specificity:

human

Cited Species:

human, mouse

**Note-IHC: suggested antigen retrieval with  
TE buffer pH 9.0; (\*) Alternatively, antigen  
retrieval may be performed with citrate  
buffer pH 6.0**

Positive Controls:

WB : DU 145 cells,

IHC : human colon cancer tissue,

## Background Information

Raf-1 proto-oncogene, serine/threonine kinase(RAF1), is a MAP kinase kinase kinase (MAP3K), which functions downstream of the Ras family of membrane associated GTPases to which it binds directly. RAF1 has two isoforms with MW of 73, 75 kDa. RAF1 plays an important role in the control of gene expression involved in the cell division cycle, apoptosis, cell differentiation and cell migration.

## Notable Publications

Author	Pubmed ID	Journal	Application
Dali Zhao	34555268	FEBS Open Bio	WB
Feifei Zhang	34017080	Oncogene	WB
Shuo Wu	40227502	J Cancer Res Clin Oncol	WB

## Storage

Storage:

Store at -20°C. Stable for one year after shipment.

Storage Buffer:

PBS with 0.02% sodium azide and 50% glycerol, pH7.3

Aliquoting is unnecessary for -20°C storage

For technical support and original validation data for this product please contact:

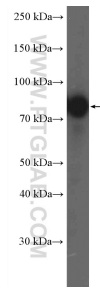
T: 4006900926

E: [Proteintech-CN@ptglab.com](mailto:Proteintech-CN@ptglab.com)

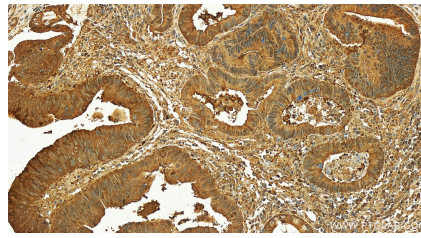
W: [ptgcn.com](http://ptgcn.com)

**This product is exclusively available under Proteintech Group brand and is not available to purchase from any other manufacturer.**

## Selected Validation Data



DU 145 cells were subjected to SDS PAGE followed by western blot with 26863-1-AP (RAF1 Antibody) at dilution of 1:1000 incubated at room temperature for 1.5 hours.



Immunohistochemical analysis of paraffin-embedded human colon cancer tissue slide using 26863-1-AP (RAF1 antibody) at dilution of 1:1200 (under 20x lens). Heat mediated antigen retrieval with Tris-EDTA buffer (pH 9.0).