

For Research Use Only

# Alpha Actin Polyclonal antibody

Catalog Number: 23660-1-AP

181 Publications



## Basic Information

### Catalog Number:

23660-1-AP

### Concentration:

600 ug/ml

### Source:

Rabbit

### Isotype:

IgG

### Immunogen Catalog Number:

AG19151

### GenBank Accession Number:

BC012597

### GeneID (NCBI):

58

### UNIPROT ID:

P68133

### Full Name:

actin, alpha 1, skeletal muscle

### Calculated MW:

42 kDa

### Observed MW:

39-42 kDa

### Purification Method:

Antigen Affinity purified

### Recommended Dilutions:

WB: 1:20000-1:100000

IP: 0.5-4.0 ug for 1.0-3.0 mg of total protein lysate

IHC: 1:50-1:200

IF-P: 1:50-1:500

IF/ICC: 1:200-1:800

FC (Intra): 0.40 ug per 10<sup>6</sup> cells in a 100 µl suspension

## Applications

### Tested Applications:

WB, IHC, IF/ICC, IF-P, FC (Intra), IP, ELISA

### Cited Applications:

WB, IHC, IF

### Species Specificity:

human, mouse, rat

### Cited Species:

human, mouse, rat, pig

**Note-IHC: suggested antigen retrieval with TE buffer pH 9.0; (\*) Alternatively, antigen retrieval may be performed with citrate buffer pH 6.0**

### Positive Controls:

**WB** : mouse skeletal muscle tissue, rat skeletal muscle tissue

**IP** : mouse skeletal muscle tissue,

**IHC** : human colon tissue, human heart tissue, human skeletal muscle tissue

**IF-P** : mouse heart tissue, mouse skeletal muscle tissue

**IF/ICC** : H9C2 cells,

**FC (Intra)** : C2C12 cells,

## Background Information

## Notable Publications

Author	Pubmed ID	Journal	Application
Xin Wen	36249018	Front Oncol	WB
Xu-Hong Fu	30224636	Acta Pharmacol Sin	WB
Ying Lin	32973959	Oncol Lett	WB

## Storage

### Storage:

Store at -20°C. Stable for one year after shipment.

### Storage Buffer:

PBS with 0.02% sodium azide and 50% glycerol, pH7.3

Aliquoting is unnecessary for -20°C storage

For technical support and original validation data for this product please contact:

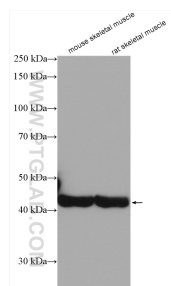
T: 4006900926

E: [Proteintech-CN@ptglab.com](mailto:Proteintech-CN@ptglab.com)

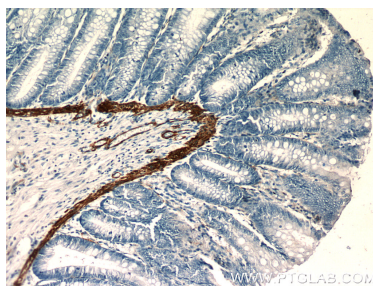
W: [ptgcn.com](http://ptgcn.com)

**This product is exclusively available under Proteintech Group brand and is not available to purchase from any other manufacturer.**

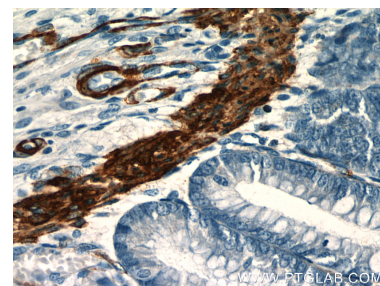
## Selected Validation Data



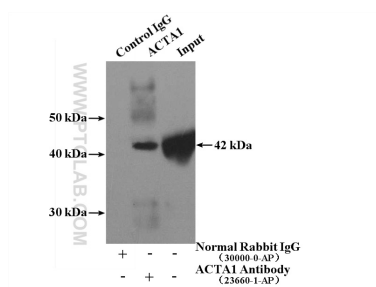
Various lysates were subjected to SDS PAGE followed by western blot with 23660-1-AP (alpha Actin antibody) at dilution of 1:150000 incubated at room temperature for 1.5 hours.



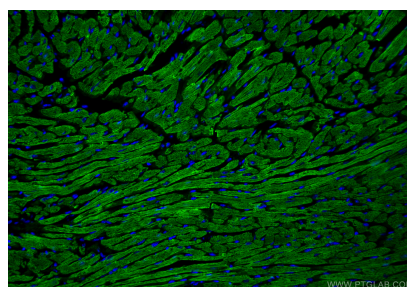
Immunohistochemical analysis of paraffin-embedded mouse heart tissue using 23660-1-AP (alpha Actin antibody at dilution of 1:50).



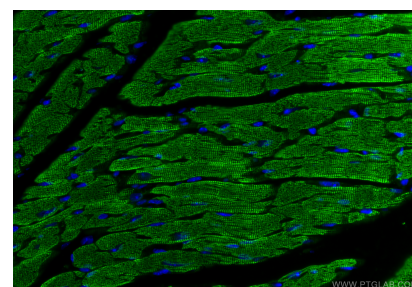
Immunohistochemical analysis of paraffin-embedded human colon tissue using 23660-1-AP (alpha Actin antibody at dilution of 1:50).



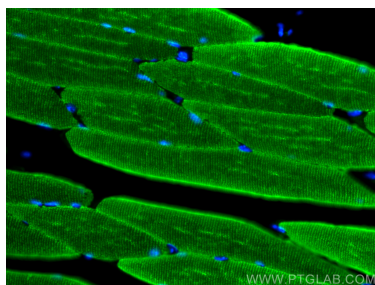
IP result of anti-Alpha Actin (IP:23660-1-AP, 4ug; Detection:23660-1-AP 1:4000) with mouse skeletal muscle tissue lysate 2200ug.



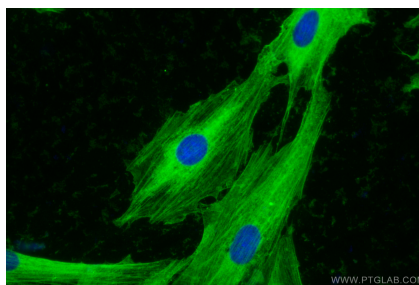
Immunofluorescent analysis of (4% PFA) fixed paraffin-embedded mouse heart tissue using Alpha Actin antibody (23660-1-AP) at dilution of 1:200 and CoraLite®488-Conjugated Goat Anti-Rabbit IgG(H+L) (SA00013-2). Heat mediated antigen retrieval with Tris-EDTA buffer (pH 9.0).



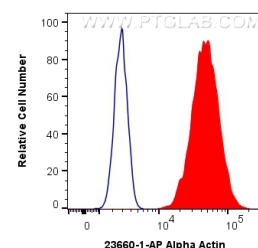
Immunofluorescent analysis of (4% PFA) fixed paraffin-embedded mouse heart tissue using Alpha Actin antibody (23660-1-AP) at dilution of 1:200 and CoraLite®488-Conjugated Goat Anti-Rabbit IgG(H+L) (SA00013-2). Heat mediated antigen retrieval with Tris-EDTA buffer (pH 9.0).



Immunofluorescent analysis of (4% PFA) fixed paraffin-embedded mouse skeletal muscle tissue using Alpha Actin antibody (23660-1-AP) at dilution of 1:200 and CoraLite®488-Conjugated Goat Anti-Rabbit IgG(H+L) (SA00013-2). Heat mediated antigen retrieval with Tris-EDTA buffer (pH 9.0).



Immunofluorescent analysis of (-20°C Ethanol) fixed H9C2 cells using Alpha Actin antibody (23660-1-AP) at dilution of 1:400 and CoraLite®488-Conjugated AffiniPure Goat Anti-Rabbit IgG(H+L) (SA00013-2).



1X10<sup>6</sup> C2C12 cells were intracellularly stained with 0.4 ug Anti-Human Alpha Actin (23660-1-AP) and CoraLite®488-Conjugated AffiniPure Goat Anti-Rabbit IgG(H+L) at dilution 1:1000 (red), or 0.4 ug Isotype Control. Cells were fixed with 4% PFA and permeabilized with Flow Cytometry Perm Buffer (PF00011-C).