

For Research Use Only

MYD88 Polyclonal antibody

Catalog Number: 23230-1-AP

Featured Product

228 Publications



Basic Information

Catalog Number:

23230-1-AP

Concentration:

600 µg/ml

Source:

Rabbit

Isotype:

IgG

Immunogen Catalog Number:

AG19770

GenBank Accession Number:

BC013589

GeneID (NCBI):

4615

UNIPROT ID:

Q99836

Full Name:

myeloid differentiation primary response gene (88)

Calculated MW:

33 kDa

Observed MW:

33 kDa

Purification Method:

Antigen affinity purification

Recommended Dilutions:

WB: 1:5000-1:50000

IP: 0.5-4.0 µg for 1.0-3.0 mg of total protein lysate

Applications

Tested Applications:

WB, IP, ELISA

Cited Applications:

WB, IHC, IF, IP, CoIP

Species Specificity:

human

Cited Species:

human, pig, canine, monkey, chicken, bovine, sheep, duck

Positive Controls:

WB: Jurkat cells, A549 cells, HepG2 cells, MCF-7 cells, K-562 cells, Raji cells

IP: K-562 cells, A549 cells

Background Information

MYD88 is a cytosolic adaptor protein that plays a central role in the innate and adaptive immune response. MYD88 is the key adaptor protein for the interleukin-1 receptor (IL-1R) and most Toll-like receptors (TLRs), which are essential for innate immunity and pathogen-associated molecular pattern recognition. Mutations in the MyD88 gene lead to the development of cancer in humans and mice suggesting that MyD88 also plays a cell autonomous role in tissue homeostasis.

Notable Publications

Author	Pubmed ID	Journal	Application
Chang Liu	36230117	Foods	WB
Yangming Zhang	36191372	Biochem Biophys Res Commun	WB
Zhaohai Wen	36238295	Front Immunol	WB

Storage

Storage:

Store at -20°C. Stable for one year after shipment.

Storage Buffer:

PBS with 0.02% sodium azide and 50% glycerol, pH7.3

Aliquoting is unnecessary for -20°C storage

For technical support and original validation data for this product please contact:

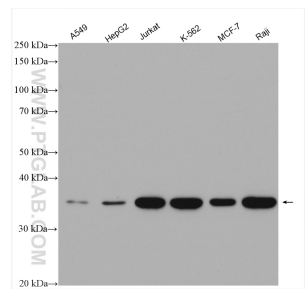
T: 4006900926

E: Proteintech-CN@ptglab.com

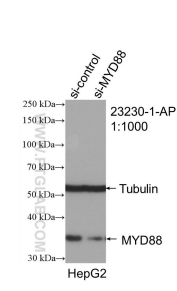
W: ptgcn.com

This product is exclusively available under Proteintech Group brand and is not available to purchase from any other manufacturer.

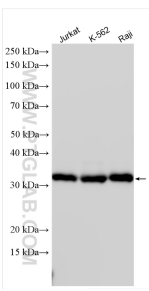
Selected Validation Data



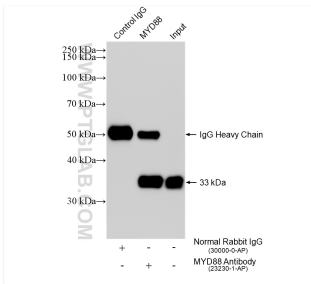
Various lysates were subjected to SDS PAGE followed by western blot with 23230-1-AP (MYD88 antibody) at dilution of 1:2000 incubated at room temperature for 1.5 hours.



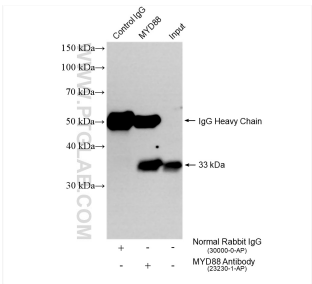
WB result of MYD88 antibody (23230-1-AP; 1:1000; incubated at room temperature for 1.5 hours) with sh-Control and sh-MYD88 transfected HepG2 cells.



Various lysates were subjected to SDS PAGE followed by western blot with 23230-1-AP (MYD88 antibody) at dilution of 1:10000 incubated at room temperature for 1.5 hours.



IP result of anti-MYD88 (IP:23230-1-AP, 4ug; Detection:23230-1-AP 1:10000) with K-562 cells lysate 1360 ug.



IP result of anti-MYD88 (IP:23230-1-AP, 4ug; Detection:23230-1-AP 1:10000) with A549 cells lysate 640 ug.