

For Research Use Only

ATG2A Polyclonal antibody

Catalog Number: 23226-1-AP

Featured Product

13 Publications



Basic Information

Catalog Number:

23226-1-AP

Concentration:

600 ug/ml

Source:

Rabbit

Isotype:

IgG

Immunogen Catalog Number:

AG19709

GenBank Accession Number:

BC110650

GeneID (NCBI):

23130

UNIPROT ID:

Q2TAZO

Full Name:

ATG2 autophagy related 2 homolog A
(S. cerevisiae)

Calculated MW:

1938 aa, 213 kDa

Observed MW:

215 kDa

Purification Method:

Antigen Affinity purified

Recommended Dilutions:

WB: 1:1000-1:8000

IP: 0.5-4.0 ug for 1.0-3.0 mg of total
protein lysate

IHC: 1:250-1:1000

IF/ICC: 1:50-1:500

Applications

Tested Applications:

WB, IHC, IF/ICC, IP, ELISA

Cited Applications:

WB, IHC, IF, IP, CoIP, Peptide array

Species Specificity:

human

Cited Species:

human, rat

Positive Controls:

WB : K-562 cells, MCF-7 cells, Raji cells

IP : K-562 cells,

IHC : mouse kidney tissue,

IF/ICC : MCF-7 cells,

**Note-IHC: suggested antigen retrieval with
TE buffer pH 9.0; (*) Alternatively, antigen
retrieval may be performed with citrate
buffer pH 6.0**

Background Information

Autophagy-related protein 2 homolog A (ATG2A) belongs to the ATG2 family. ATG2A is a lipid transfer protein involved in autophagosome assembly (PMID:31271352). ATG2A tethers the edge of the isolation membrane (IM) to the endoplasmic reticulum (ER) and mediates direct lipid transfer from ER to IM for IM expansion. ATG2A binds to the ER exit site (ERES), which is the membrane source for autophagosome formation, and extracts phospholipids from the membrane source and transfers them to ATG9 (ATG9A or ATG9B) to the IM for membrane expansion (PMID: 30952800, PMID: 31271352). ATG2A also regulates lipid droplet morphology and distribution within the cell (PMID: 28561066). The observed MW of ATG2A is 215 kDa.

Notable Publications

Author	Pubmed ID	Journal	Application
Jay Xiaojun Tan	36071159	Nature	WB
Ying Li	33124742	FASEB J	WB
Elodie Mailler	34799570	Nat Commun	IF

Storage

Storage:

Store at -20°C. Stable for one year after shipment.

Storage Buffer:

PBS with 0.02% sodium azide and 50% glycerol, pH7.3

Aliquoting is unnecessary for -20°C storage

For technical support and original validation data for this product please contact:

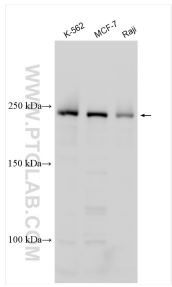
T: 4006900926

E: Proteintech-CN@ptglab.com

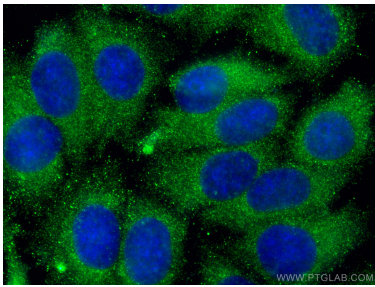
W: ptgcn.com

This product is exclusively available under Proteintech Group brand and is not available to purchase from any other manufacturer.

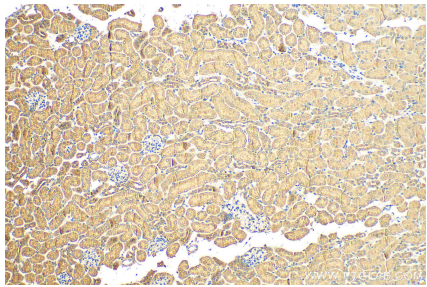
Selected Validation Data



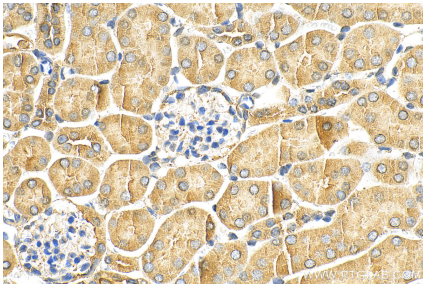
Various lysates were subjected to SDS PAGE followed by western blot with 23226-1-AP (ATG2A antibody) at dilution of 1:4000 incubated at room temperature for 1.5 hours.



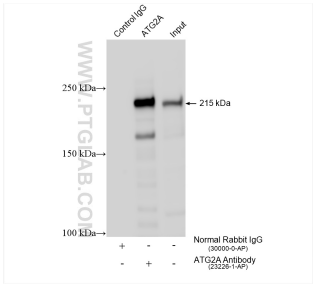
Immunofluorescent analysis of (-20°C Methanol) fixed MCF-7 cells using ATG2A antibody (23226-1-AP) at dilution of 1:200 and CoraLite® 488-Conjugated AffiniPure Goat Anti-Rabbit IgG(H+L) (SA00013-2).



Immunohistochemical analysis of paraffin-embedded mouse kidney tissue slide using 23226-1-AP (ATG2A antibody) at dilution of 1:500 (under 10x lens). Heat mediated antigen retrieval with Tris-EDTA buffer (pH 9.0).



Immunohistochemical analysis of paraffin-embedded mouse kidney tissue slide using 23226-1-AP (ATG2A antibody) at dilution of 1:500 (under 40x lens). Heat mediated antigen retrieval with Tris-EDTA buffer (pH 9.0).



IP result of anti-ATG2A (IP:23226-1-AP, 4ug; Detection:23226-1-AP 1:4000) with K-562 cells lysate 2400 ug.