

For Research Use Only

# Alpha cardiac muscle actin Polyclonal antibody

Catalog Number: 23082-1-AP

1 Publications



## Basic Information

Catalog Number:

23082-1-AP

Concentration:

500 ug/ml

Source:

Rabbit

Isotype:

IgG

Immunogen Catalog Number:

AG19482

GenBank Accession Number:

BC009978

GeneID (NCBI):

70

UNIPROT ID:

P68032

Full Name:

actin, alpha, cardiac muscle 1

Calculated MW:

377 aa, 42 kDa

Observed MW:

42-45 kDa

Purification Method:

Antigen affinity purification

Recommended Dilutions:

WB: 1:500-1:2000

IHC: 1:200-1:1000

FC (Intra): 0.40 ug per 10<sup>6</sup> cells in a 100 µl suspension

## Applications

Tested Applications:

WB, IHC, FC (Intra), ELISA

Cited Applications:

WB

Species Specificity:

human, mouse

**Note-IHC: suggested antigen retrieval with TE buffer pH 9.0; (\*) Alternatively, antigen retrieval may be performed with citrate buffer pH 6.0**

Positive Controls:

WB : mouse heart tissue,

IHC : human normal colon, human colon tissue, human heart tissue, human skeletal muscle tissue, human small intestine tissue, mouse skeletal muscle tissue, mouse heart tissue, mouse colon tissue

FC (Intra) : C2C12 cells,

## Background Information

### Notable Publications

Author	Pubmed ID	Journal	Application
Hideshi Okada	25466765	Circ Heart Fail	WB

## Storage

Storage:

Store at -20°C. Stable for one year after shipment.

Storage Buffer:

PBS with 0.02% sodium azide and 50% glycerol, pH7.3

Aliquoting is unnecessary for -20°C storage

For technical support and original validation data for this product please contact:

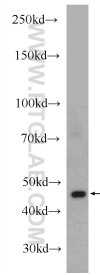
T: 4006900926

E: [Proteintech-CN@ptglab.com](mailto:Proteintech-CN@ptglab.com)

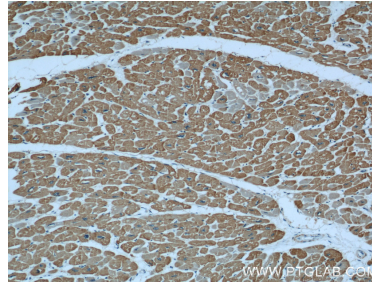
W: [ptgcn.com](http://ptgcn.com)

**This product is exclusively available under Proteintech Group brand and is not available to purchase from any other manufacturer.**

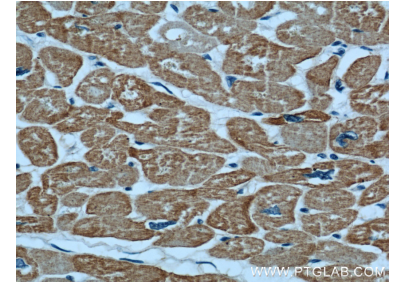
## Selected Validation Data



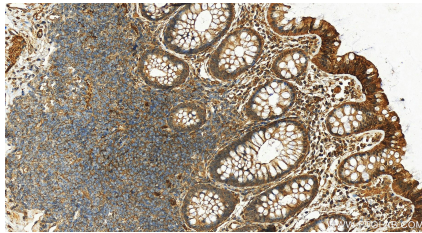
mouse heart tissue were subjected to SDS PAGE followed by western blot with 23082-1-AP (alpha Actin antibody at dilution of 1:1000 incubated at room temperature for 1.5 hours.



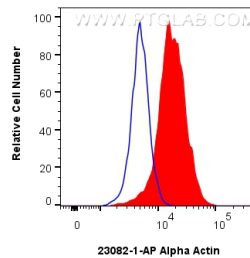
Immunohistochemical analysis of paraffin-embedded human heart using 23082-1-AP (alpha Actin antibody) at dilution of 1:100 (under 10x lens).



Immunohistochemical analysis of paraffin-embedded human heart using 23082-1-AP (alpha Actin antibody) at dilution of 1:100 (under 40x lens).



Immunohistochemical analysis of paraffin-embedded human colon tissue slide using 23082-1-AP (Alpha Actin antibody) at dilution of 1:200 (under 20x lens). Heat mediated antigen retrieval with Tris-EDTA buffer (pH 9.0).



$1 \times 10^6$  C2C12 cells were intracellularly stained with 0.4 ug Alpha Actin Polyclonal antibody (23082-1-AP) and CoraLite®488-Conjugated Goat Anti-Rabbit IgG(H+L) (SA00013-2)(red), or 0.4 ug Rabbit IgG control Rabbit PolyAb (30000-O-AP) (blue). Cells were fixed with 4% PFA and permeabilized with Flow Cytometry Perm Buffer (PF00011-C).