

For Research Use Only

Dopamine Transporter/DAT Polyclonal antibody

Catalog Number: 22524-1-AP

57 Publications



Basic Information

Catalog Number:

22524-1-AP

Concentration:

600 ug/ml

Source:

Rabbit

Isotype:

IgG

Immunogen Catalog Number:

AG18297

GenBank Accession Number:

BC133003

GeneID (NCBI):

6531

UNIPROT ID:

Q01959

Full Name:

solute carrier family 6
(neurotransmitter transporter,
dopamine), member 3

Calculated MW:

620 aa, 68 kDa

Observed MW:

68 kDa

Purification Method:

Antigen affinity purification

Recommended Dilutions:

WB: 1:500-1:2000

IP: 0.5-4.0 ug for 1.0-3.0 mg of total
protein lysate

IHC: 1:50-1:500

IF-P: 1:50-1:500

IF-Fro: 1:50-1:500

Applications

Tested Applications:

WB, IHC, IF-P, IF-Fro, IP, ELISA

Cited Applications:

WB, IHC, IF

Species Specificity:

human, mouse, rat

Cited Species:

human, mouse, rat, monkey

Positive Controls:

WB : mouse brain tissue,

IP : mouse brain tissue,

IHC : mouse brain tissue,

IF-P : mouse brain tissue,

IF-Fro : mouse brain tissue,

**Note-IHC: suggested antigen retrieval with
TE buffer pH 9.0; (*) Alternatively, antigen
retrieval may be performed with citrate
buffer pH 6.0**

Background Information

DAT, also name as SLC6A3, is dopamine transporter which is a member of the sodium- and chloride- dependent neurotransmitter transporter family. Dopamine(DA) released from neurons is cleared by the DA transporter (DAT). Altered dopaminergic signaling is linked to multiple neuropsychiatric disorders, such as attention deficit hyperactive disorder, mood disorders, schizophrenia, autism and so on (PMID:30755521). 22524-1-AP can detect 70-80kDa band, which is consistent with the report (PMID:12746456).

Notable Publications

Author	Pubmed ID	Journal	Application
Hideaki Kuge	32963038	J Lipid Res	WB,IF
Mo Xu	31535395	J Neurosci Res	
Beatriz Franco	34651324	J Neurosci Res	WB

Storage

Storage:

Store at -20°C. Stable for one year after shipment.

Storage Buffer:

PBS with 0.02% sodium azide and 50% glycerol, pH7.3

Aliquoting is unnecessary for -20°C storage

For technical support and original validation data for this product please contact:

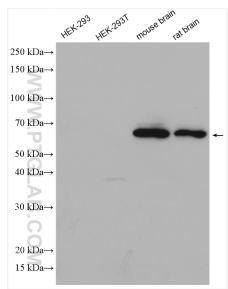
T: 4006900926

E: Proteintech-CN@ptglab.com

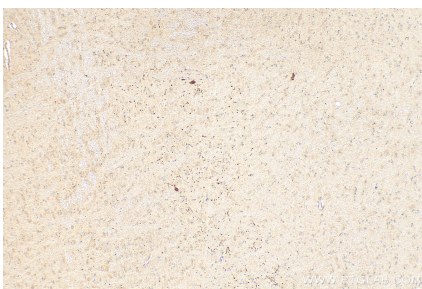
W: ptgcn.com

This product is exclusively available under Proteintech Group brand and is not available to purchase from any other manufacturer.

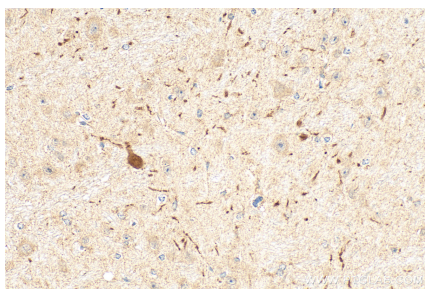
Selected Validation Data



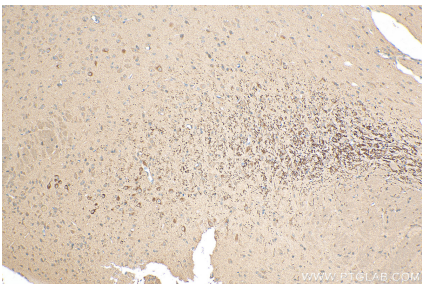
Various lysates were subjected to SDS PAGE followed by western blot with 22524-1-AP (DAT antibody) at dilution of 1:1000 incubated at room temperature for 1.5 hours.



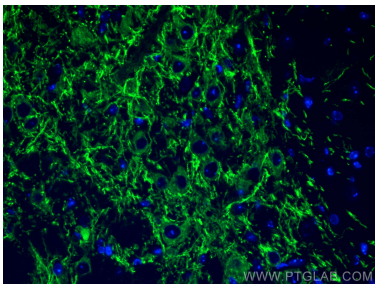
Immunohistochemical analysis of paraffin-embedded mouse brain tissue slide using 22524-1-AP (DAT antibody) at dilution of 1:200 (under 10x lens). Heat mediated antigen retrieval with Tris-EDTA buffer (pH 9.0).



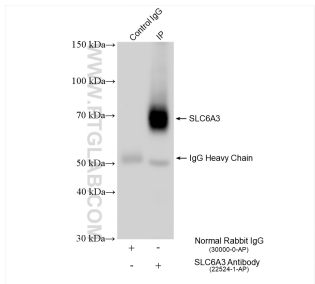
Immunohistochemical analysis of paraffin-embedded mouse brain tissue slide using 22524-1-AP (DAT antibody) at dilution of 1:200 (under 40x lens). Heat mediated antigen retrieval with Tris-EDTA buffer (pH 9.0).



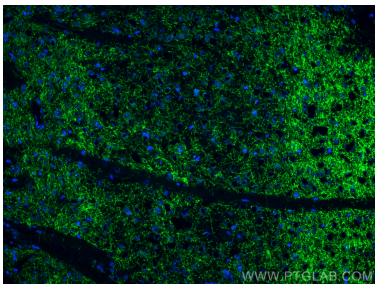
Immunohistochemical analysis of paraffin-embedded mouse brain tissue slide using 22524-1-AP (DAT antibody) at dilution of 1:200 (under 10x lens). Heat mediated antigen retrieval with Tris-EDTA buffer (pH 9.0).



Immunofluorescent analysis of (4% PFA) fixed mouse brain tissue using DAT antibody (22524-1-AP) at dilution of 1:200 and CoraLite®488-Conjugated AffiniPure Goat Anti-Rabbit IgG(H+L).



IP result of anti-Dopamine Transporter/DAT (IP:22524-1-AP, 4ug; Detection:22524-1-AP 1:1000) with mouse brain tissue lysate 1720 ug.



Immunofluorescent analysis of (4% PFA) fixed frozen OCT-embedded mouse brain tissue using Dopamine Transporter/DAT antibody (22524-1-AP) at dilution of 1:200 and CoraLite®488-Conjugated Goat Anti-Rabbit IgG(H+L) (SA00013-2).