

For Research Use Only

# TLE3 Polyclonal antibody

Catalog Number: 22094-1-AP

Featured Product

2 Publications



## Basic Information

### Catalog Number:

22094-1-AP

### Concentration:

500 ug/ml

### Source:

Rabbit

### Isotype:

IgG

### Immunogen Catalog Number:

AG17300

### GenBank Accession Number:

BC015729

### GeneID (NCBI):

7090

### UNIPROT ID:

Q04726

### Full Name:

transducin-like enhancer of split 3  
(E(sp1) homolog, Drosophila)

### Calculated MW:

772 aa, 83 kDa

### Observed MW:

90 kDa

### Purification Method:

Antigen affinity purification

### Recommended Dilutions:

WB: 1:1000-1:4000

IP: 0.5-4.0 ug for 1.0-3.0 mg of total  
protein lysate

IHC: 1:50-1:500

IF/ICC: 1:300-1:1200

## Applications

### Tested Applications:

WB, IHC, IF/ICC, IP, ELISA

### Cited Applications:

WB, IF

### Species Specificity:

human, mouse, rat

### Cited Species:

mouse

**Note-IHC: suggested antigen retrieval with  
TE buffer pH 9.0; (\*) Alternatively, antigen  
retrieval may be performed with citrate  
buffer pH 6.0**

### Positive Controls:

WB : HEK-293 cells, A431 cells, HepG2 cells

IP : HepG2 cells,

IHC : human lung cancer tissue, human breast cancer  
tissue

IF/ICC : HepG2 cells,

## Background Information

Transducin-like enhancer of split 3 (TLE3) is a corepressor that binds to a variant of transcription factor, which mediated by CTNNB1 and TCF family members in Wnt signaling. It's suggested that effect of full-length TLE family members be regulated by association with dominant-negative AES.

## Notable Publications

Author	Pubmed ID	Journal	Application
Sangho Lee	31569653	Cells	WB, IF
Jonathan Kelebeev	39898439	J Cell Sci	

## Storage

### Storage:

Store at -20°C. Stable for one year after shipment.

### Storage Buffer:

PBS with 0.02% sodium azide and 50% glycerol, pH7.3

Aliquoting is unnecessary for -20°C storage

For technical support and original validation data for this product please contact:

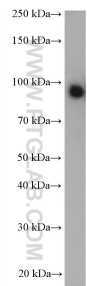
T: 4006900926

E: [Proteintech-CN@ptglab.com](mailto:Proteintech-CN@ptglab.com)

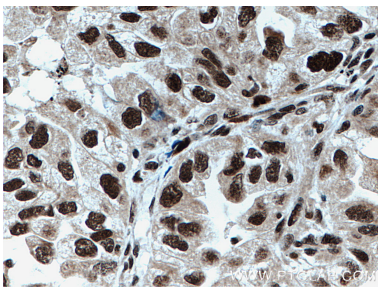
W: [ptgcn.com](http://ptgcn.com)

**This product is exclusively available under Proteintech Group brand and is not available to purchase from any other manufacturer.**

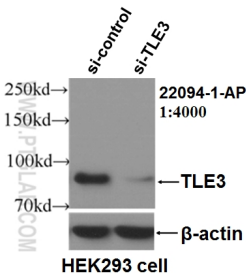
Selected Validation Data



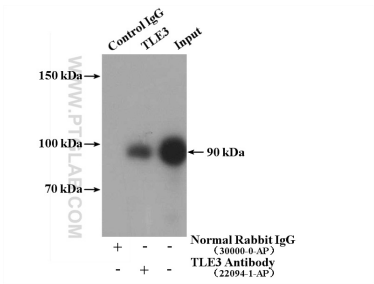
HEK-293 cells were subjected to SDS PAGE followed by western blot with 22094-1-AP (TLE3 antibody) at dilution of 1:2000 incubated at room temperature for 1.5 hours.



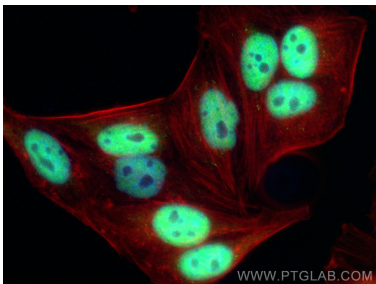
Immunohistochemical analysis of paraffin-embedded human lung cancer tissue slide using 22094-1-AP (TLE3 antibody) at dilution of 1:200 (under 40x lens. Heat mediated antigen retrieval with Tris-EDTA buffer (pH 9.0).



WB result of TLE3 antibody (22094-1-AP, 1:4000) with si-Control and si-TLE3 transfected HEK293 cells.



IP result of anti-TLE3 (IP:22094-1-AP, 4ug; Detection:22094-1-AP 1:1000) with HepG2 cells lysate 2400ug.



Immunofluorescent analysis of (4% PFA) fixed HepG2 cells using TLE3 antibody (22094-1-AP) at dilution of 1:600 and CoraLite®488-Conjugated AffiniPure Goat Anti-Rabbit IgG(H+L) (SA00013-2), CL594-Phalloidin (red).