

For Research Use Only

# CD107a / LAMP1 Polyclonal antibody

Catalog Number: 21997-1-AP

152 Publications



## Basic Information

### Catalog Number:

21997-1-AP

### Concentration:

800 ug/ml

### Source:

Rabbit

### Isotype:

IgG

### Immunogen Catalog Number:

AG17367

### GenBank Accession Number:

BC021288

### GeneID (NCBI):

3916

### ENSEMBL Gene ID:

ENSG00000185896

### UNIPROT ID:

P11279

### Full Name:

lysosomal-associated membrane protein 1

### Calculated MW:

45 kDa

### Observed MW:

90-120 kDa

### Purification Method:

Antigen affinity purification

### Recommended Dilutions:

WB: 1:1000-1:8000

IHC: 1:50-1:500

IF-P: 1:50-1:500

## Applications

### Tested Applications:

WB, IHC, IF-P, ELISA

### Cited Applications:

WB, IHC, IP, CoIP

### Species Specificity:

human

### Cited Species:

human, pig, monkey, zebrafish, bovine, turtle

**Note-IHC: suggested antigen retrieval with TE buffer pH 9.0; (\*) Alternatively, antigen retrieval may be performed with citrate buffer pH 6.0**

### Positive Controls:

WB : HepG2 cells, U937 cells

IHC : human liver cancer tissue, human placenta tissue, human gliomas tissue, human pancreas tissue

IF-P : human ovary tumor tissue,

## Background Information

LAMP1 (also known as CD107a) is a 90-120 kDa heavily glycosylated membrane protein enriched in the lysosomal membrane. LAMP1 functions to provide selectins with carbohydrate ligands. This protein has also been shown to be a marker of degranulation on lymphocytes such as CD8+ and NK cells and may also play a role in tumor cell differentiation and metastasis.

## Notable Publications

Author	Pubmed ID	Journal	Application
Wei Cai	36170234	Autophagy	
Yong Fan	34560177	Food Chem Toxicol	WB
Jie Liu	36096243	Life Sci	WB

## Storage

### Storage:

Store at -20°C. Stable for one year after shipment.

### Storage Buffer:

PBS with 0.02% sodium azide and 50% glycerol, pH7.3

Aliquoting is unnecessary for -20°C storage

For technical support and original validation data for this product please contact:

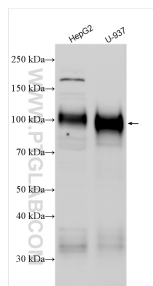
T: 4006900926

E: [Proteintech-CN@ptglab.com](mailto:Proteintech-CN@ptglab.com)

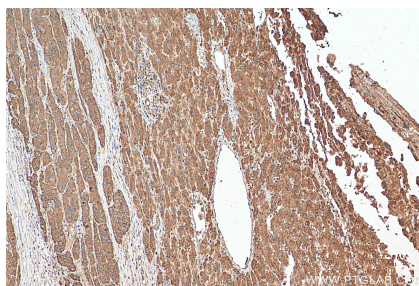
W: [ptgcn.com](http://ptgcn.com)

**This product is exclusively available under Proteintech Group brand and is not available to purchase from any other manufacturer.**

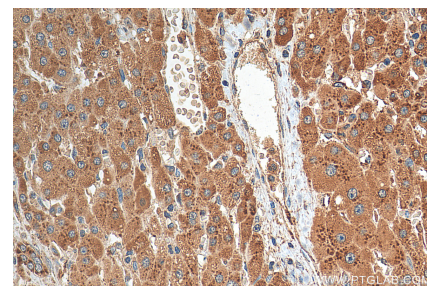
## Selected Validation Data



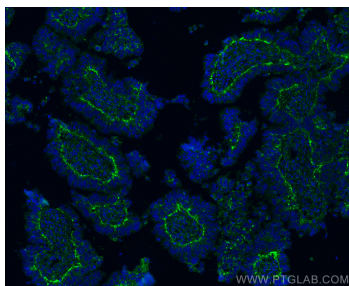
Various lysates were subjected to SDS PAGE followed by western blot with 21997-1-AP (CD107a / LAMP1 antibody) at dilution of 1:4000 incubated at room temperature for 1.5 hours.



Immunohistochemical analysis of paraffin-embedded human liver cancer tissue slide using 21997-1-AP (LAMP1 antibody) at dilution of 1:200 (under 10x lens). Heat mediated antigen retrieval with Tris-EDTA buffer (pH 9.0).



Immunohistochemical analysis of paraffin-embedded human liver cancer tissue slide using 21997-1-AP (LAMP1 antibody) at dilution of 1:200 (under 40x lens). Heat mediated antigen retrieval with Tris-EDTA buffer (pH 9.0).



Immunofluorescent analysis of (4% PFA) fixed paraffin-embedded human ovary tumor tissue using CD107a / LAMP1 antibody (21997-1-AP) at dilution of 1:200 and Coralite® 488-Conjugated Goat Anti-Rabbit IgG(H+L) (SA00013-2). Heat mediated antigen retrieval with Tris-EDTA buffer (pH 9.0).