

For Research Use Only

IL-6 Polyclonal antibody

Catalog Number: 21865-1-AP

Featured Product

738 Publications



Basic Information

Catalog Number:

21865-1-AP

Concentration:

650 ug/ml

Source:

Rabbit

Isotype:

IgG

Immunogen Catalog Number:

AG10565

GenBank Accession Number:

BC015511

GeneID (NCBI):

3569

ENSEMBL Gene ID:

ENSG00000136244

UNIPROT ID:

P05231

Full Name:

interleukin 6 (interferon, beta 2)

Calculated MW:

212 aa, 24 kDa

Observed MW:

20 kDa

Purification Method:

Antigen affinity purification

Recommended Dilutions:

WB: 1:500-1:2000

IP: 0.5-4.0 ug for 1.0-3.0 mg of total protein lysate

IF/ICC: 1:200-1:800

Applications

Tested Applications:

WB, IP, ELISA

Cited Applications:

WB, IHC, Neutralization, ELISA

Species Specificity:

human

Cited Species:

human, pig, rabbit, canine, bovine, goat

Positive Controls:

WB : LPS and Protein transport inhibitor treated HUVEC cells,

IP : LPS and Protein transport inhibitor treated HUVEC cells,

IF/ICC : LPS and Brefeldin A treated HUVEC cells,

Background Information

Interleukin-6 (IL-6) is an interleukin that acts as both a pro-inflammatory and anti-inflammatory cytokine. IL-6 protein is secreted by a variety of cell types including T cells and macrophages as phosphorylated and variably glycosylated molecule. IL-6 plays an essential role in the final differentiation of B-cells into Ig-secreting cells involved in lymphocyte and monocyte differentiation. It induces myeloma and plasmacytoma growth and induces nerve cells differentiation acts on B-cells, T-cells, hepatocytes, hematopoietic progenitor cells and cells of the CNS. IL-6 is also considered a myokine, a cytokine produced from muscle, and is elevated in response to muscle contraction. IL-6 has been shown to interact with interleukin-6 receptor and glycoprotein 130. Additionally, IL-6 is involved in hematopoiesis, bone metabolism, and cancer progression, and has been defined an essential role in directing transition from innate to acquired immunity.

Notable Publications

| Author | Pubmed ID | Journal | Application |
|--------------|-----------|------------------|-------------|
| Yanliang Wu | 34601083 | J Ethnopharmacol | |
| Qian Chen | 32997272 | J Nat Med | |
| Donghui Yang | 32996162 | J Cell Physiol | |

Storage

Storage:

Store at -20°C. Stable for one year after shipment.

Storage Buffer:

PBS with 0.02% sodium azide and 50% glycerol, pH7.3

Aliquoting is unnecessary for -20°C storage

For technical support and original validation data for this product please contact:

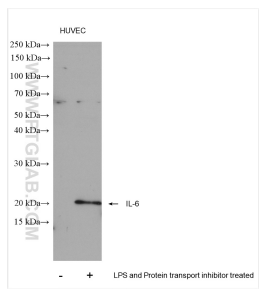
T: 4006900926

E: Proteintech-CN@ptglab.com

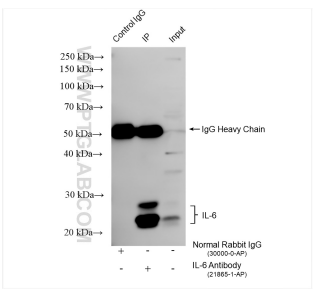
W: ptgcn.com

This product is exclusively available under Proteintech Group brand and is not available to purchase from any other manufacturer.

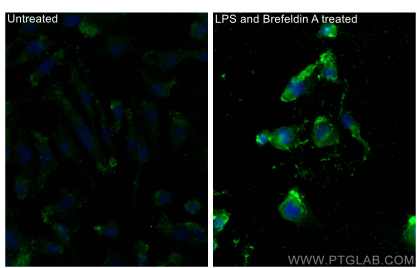
Selected Validation Data



Untreated HUVEC cells, HUVEC cells (treated with 0.5 µg/ml LPS for 24 hours, then add 300 ng/ml protein transport inhibitor last 20 hours) were subjected to SDS PAGE followed by western blot with 21865-1-AP (IL-6 antibody) at dilution of 1:1000 incubated at room temperature for 1.5 hours.



IP result of anti-IL-6 (IP:21865-1-AP, 4µg; Detection:21865-1-AP 1:1000) with LPS and Protein transport inhibitor treated HUVEC cells lysate 800 µg.



Immunofluorescent analysis of (-20°C Methanol) fixed LPS and Brefeldin A treated HUVEC cells using IL-6 antibody (21865-1-AP) at dilution of 1:400 and CoraLite®488-Conjugated AffiniPure Goat Anti-Rabbit IgG(H+L) (SA00013-2).