

For Research Use Only

# TMED9 Polyclonal antibody

Catalog Number: 21620-1-AP

Featured Product

9 Publications



## Basic Information

Catalog Number:

21620-1-AP

Concentration:

500 µg/ml

Source:

Rabbit

Isotype:

IgG

Immunogen Catalog Number:

AG13813

GenBank Accession Number:

BC001123

GeneID (NCBI):

54732

UNIPROT ID:

Q9BVK6

Full Name:

transmembrane emp24 protein  
transport domain containing 9

Calculated MW:

235 aa, 27 kDa

Observed MW:

24-27 kDa

Purification Method:

Antigen affinity purification

Recommended Dilutions:

WB: 1:1000-1:8000

IP: 0.5-4.0 µg for 1.0-3.0 mg of total  
protein lysate

IHC: 1:50-1:500

IF/ICC: 1:50-1:500

## Applications

Tested Applications:

WB, IHC, IF/ICC, IP, ELISA

Cited Applications:

WB, IHC, IF, CoIP

Species Specificity:

human, mouse, rat, pig

Cited Species:

human, mouse, rat

**Note-IHC: suggested antigen retrieval with  
TE buffer pH 9.0; (\*) Alternatively, antigen  
retrieval may be performed with citrate  
buffer pH 6.0**

Positive Controls:

**WB**: HepG2 cells, L02 cells, pig liver tissue, mouse  
lung tissue, mouse pancreas tissue, mouse brain  
tissue, mouse liver tissue, rat liver tissue

**IP**: mouse liver tissue,

**IHC**: human liver tissue,

**IF/ICC**: HepG2 cells, HEK-293 cells

## Background Information

TMED9 (also named as GMP25, GP25L2 or p25) is a member of the EMP24/GP25L family. TMED9 probably forms hetero-oligomeric complexes with TMED7 (p27), TMED2 (p24), and TMED10 (p23) (PMID: 10359607). Located in the endoplasmic reticulum and the Golgi, TMED9 appears to be involved in vesicular protein trafficking, mainly in the early secretory pathway (PMID: 9472029; 10359607).

## Notable Publications

Author	Pubmed ID	Journal	Application
Shulin Li	34561617	Cell Res	WB, CoIP
Xihua Yue	34493279	BMC Biol	WB
Gaoda Ju	34635011	Bioengineered	WB, IHC

## Storage

Storage:

Store at -20°C. Stable for one year after shipment.

Storage Buffer:

PBS with 0.02% sodium azide and 50% glycerol, pH7.3

Aliquoting is unnecessary for -20°C storage

For technical support and original validation data for this product please contact:

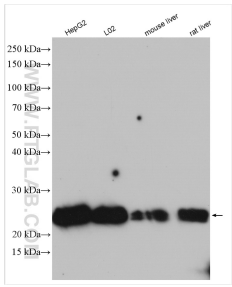
T: 4006900926

E: [Proteintech-CN@ptglab.com](mailto:Proteintech-CN@ptglab.com)

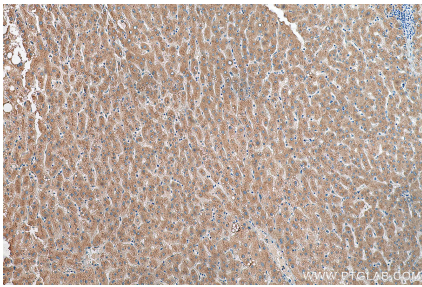
W: [ptgcn.com](http://ptgcn.com)

**This product is exclusively available under Proteintech Group brand and is not available to purchase from any other manufacturer.**

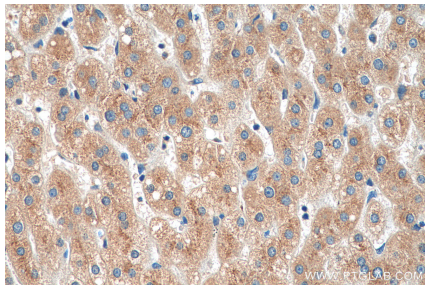
Selected Validation Data



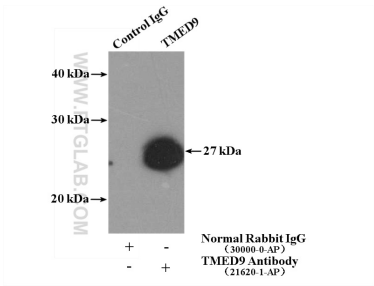
Various lysates were subjected to SDS PAGE followed by western blot with 21620-1-AP (TMED9 antibody) at dilution of 1:4000 incubated at room temperature for 1.5 hours.



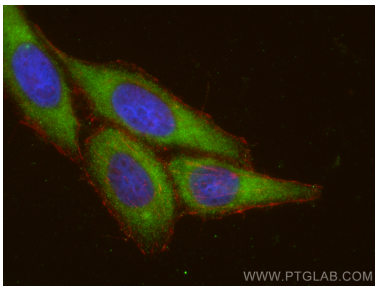
Immunohistochemical analysis of paraffin-embedded human liver tissue slide using 21620-1-AP (TMED9 antibody) at dilution of 1:200 (under 10x lens). Heat mediated antigen retrieval with Tris-EDTA buffer (pH 9.0).



Immunohistochemical analysis of paraffin-embedded human liver tissue slide using 21620-1-AP (TMED9 antibody) at dilution of 1:200 (under 40x lens). Heat mediated antigen retrieval with Tris-EDTA buffer (pH 9.0).



IP result of anti-TMED9 (IP:21620-1-AP, 4ug; Detection:21620-1-AP 1:500) with mouse liver tissue lysate 4000ug.



Immunofluorescent analysis of (-20°C Ethanol) fixed HepG2 cells using TMED9 antibody (21620-1-AP) at dilution of 1:200 and CoraLite®488-Conjugated Goat Anti-Rabbit IgG(H+L), CL594-phalloidin (red).