

For Research Use Only

NF-H/NF200 Polyclonal antibody

Catalog Number: 21471-1-AP

7 Publications



Basic Information

Catalog Number: 21471-1-AP	GenBank Accession Number: BC073969	Purification Method: Antigen affinity purification
Concentration: 300 ug/ml	GeneID (NCBI): 4744	Recommended Dilutions: WB: 1:1000-1:4000
Source: Rabbit	UNIPROT ID: P12036	IHC: 1:50-1:500
Isotype: IgG	Full Name: neurofilament, heavy polypeptide	IF-P: 1:200-1:800
Immunogen Catalog Number: AG15249	Calculated MW: 1026 aa, 112 kDa	
	Observed MW: 200 kDa	

Applications

Tested Applications: WB, IHC, IF-P, ELISA	Positive Controls:
Cited Applications: WB, IF	WB : mouse brain tissue,
Species Specificity: human, mouse, rat	IHC : human brain tissue,
Cited Species: mouse, rat, monkey	IF-P : rat brain tissue,
Note-IHC: suggested antigen retrieval with TE buffer pH 9.0; (*) Alternatively, antigen retrieval may be performed with citrate buffer pH 6.0	

Background Information

NEFH, also named as KIAA0845 and NFH, Belongs to the intermediate filament family. It has an important function in mature axons that is not subserved by the two smaller NF proteins. Neurofilaments are the 10nm intermediate filaments found specifically in neurons. They are a major component of the cell's cytoskeleton, and provide support for normal axonal radial growth. Neurofilaments usually contain three intermediate filament proteins: L, M, and H which are involved in the maintenance of neuronal caliber. The names given to the three major neurofilament subunits are based upon the apparent molecular weight of the mammalian subunits on SDS-PAGE: NF-L, 65-68kd; NF-M, 145-160kd and NF-H, 200-220kd. This antibody recognize NEFH only.

Notable Publications

Author	Pubmed ID	Journal	Application
Feng Yue	34704001	iScience	IF
Huanliang Liu	31829301	Sci Total Environ	WB
Jeffrey M Gimble	30881803	Plast Reconstr Surg Glob Open	IF

Storage

Storage:
Store at -20°C. Stable for one year after shipment.
Storage Buffer:
PBS with 0.02% sodium azide and 50% glycerol, pH7.3
Aliquoting is unnecessary for -20°C storage

For technical support and original validation data for this product please contact:

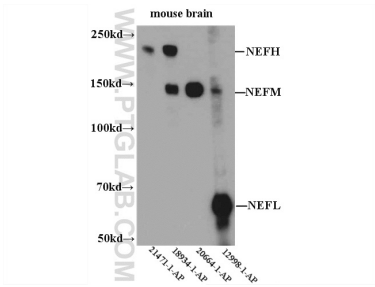
T: 4006900926

E: Proteintech-CN@ptglab.com

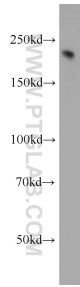
W: ptgcn.com

This product is exclusively available under Proteintech Group brand and is not available to purchase from any other manufacturer.

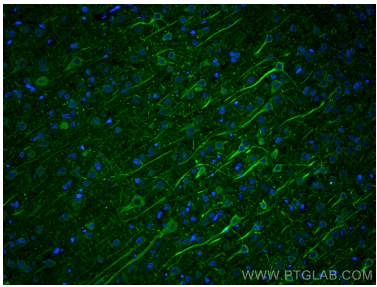
Selected Validation Data



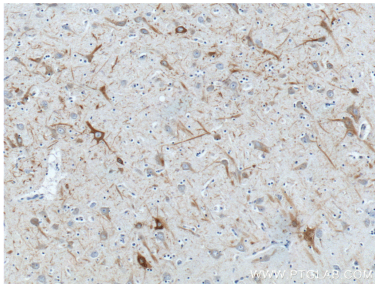
WB result of 21471-1-AP.



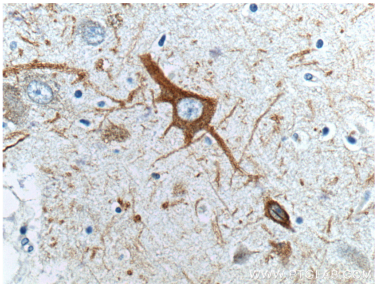
mouse brain tissue were subjected to SDS PAGE followed by western blot with 21471-1-AP (NF-H antibody) at dilution of 1:2000 incubated at room temperature for 1.5 hours.



Immunofluorescent analysis of (4% PFA) fixed paraffin-embedded rat brain tissue using NF-H/NF200 antibody (21471-1-AP) at dilution of 1:400 and CoraLite®488-Conjugated Goat Anti-Rabbit IgG(H+L) (SA00013-2). Heat mediated antigen retrieval with Tris-EDTA buffer (pH 9.0).



Immunohistochemical analysis of paraffin-embedded human brain tissue slide using 21471-1-AP (NF-H antibody at dilution of 1:200 (under 10x lens).



Immunohistochemical analysis of paraffin-embedded human brain tissue slide using 21471-1-AP (NF-H antibody at dilution of 1:200 (under 40x lens).