

For Research Use Only

# Rubicon Polyclonal antibody

Catalog Number: 21444-1-AP

Featured Product

22 Publications



## Basic Information

Catalog Number:

21444-1-AP

Concentration:

900 µg/ml

Source:

Rabbit

Isotype:

IgG

Immunogen Catalog Number:

AG13715

GenBank Accession Number:

BC033615

GeneID (NCBI):

9711

UNIPROT ID:

Q92622

Full Name:

KIAA0226

Calculated MW:

972 aa, 109 kDa

Observed MW:

110-130 kDa

Purification Method:

Antigen affinity purification

Recommended Dilutions:

WB: 1:500-1:2000

IHC: 1:20-1:200

IF/ICC: 1:50-1:500

## Applications

Tested Applications:

WB, IHC, IF/ICC, ELISA

Cited Applications:

WB, IHC, IF, IP

Species Specificity:

human, mouse, rat

Cited Species:

human, mouse, rat, escherichia coli

**Note-IHC: suggested antigen retrieval with TE buffer pH 9.0; (\*) Alternatively, antigen retrieval may be performed with citrate buffer pH 6.0**

Positive Controls:

WB : mouse liver tissue, HeLa cells, HepG2 cells

IHC : human testis tissue, human tonsillitis tissue

IF/ICC : HepG2 cells, A431 cells

## Background Information

Rubicon (Run domain Beclin-1 interacting and cysteine-rich containing protein) consists of an N-terminal RUN domain, a middle region that includes its PI3K-binding domain (PIKBD), a coiled-coil domain (CCD), a serine-rich region (S-R), a helix-coil-rich domain (H-C) and a C-terminal Rubicon homology domain (RH) (PMID: 36288306). Rubicon is ubiquitously expressed in most tissue and organs.

## Notable Publications

Author	Pubmed ID	Journal	Application
Wei Cai	36170234	Autophagy	WB,IF,IP
Luis Muniz-Feliciano	28933590	Autophagy	WB,IF
Xiaosen Ouyang	34504306	Lab Invest	IHC

## Storage

Storage:

Store at -20°C. Stable for one year after shipment.

Storage Buffer:

PBS with 0.02% sodium azide and 50% glycerol, pH7.3

Aliquoting is unnecessary for -20°C storage

For technical support and original validation data for this product please contact:

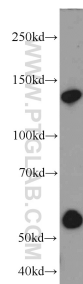
T: 4006900926

E: [Proteintech-CN@ptglab.com](mailto:Proteintech-CN@ptglab.com)

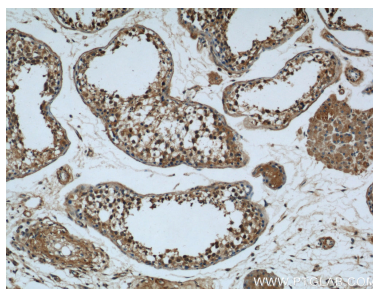
W: [ptgcn.com](http://ptgcn.com)

This product is exclusively available under Proteintech Group brand and is not available to purchase from any other manufacturer.

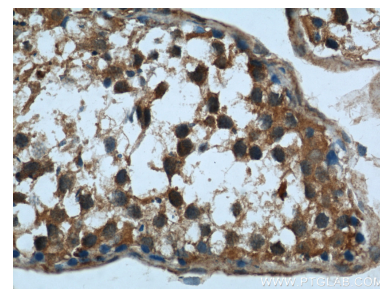
## Selected Validation Data



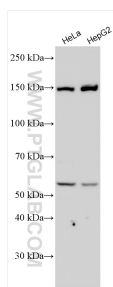
mouse liver tissue were subjected to SDS PAGE followed by western blot with 21444-1-AP (Rubicon antibody) at dilution of 1:1000 incubated at room temperature for 1.5 hours.



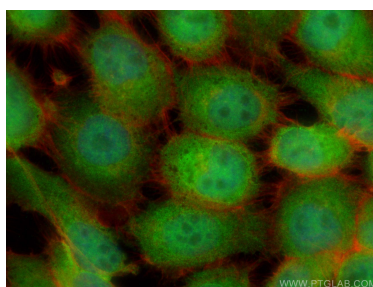
Immunohistochemical analysis of paraffin-embedded human testis using 21444-1-AP (Rubicon antibody) at dilution of 1:50 (under 10x lens).



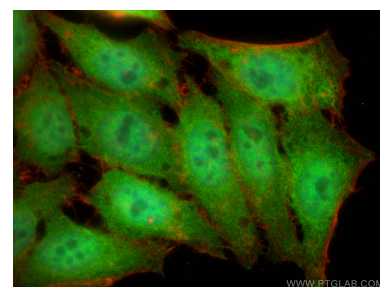
Immunohistochemical analysis of paraffin-embedded human testis using 21444-1-AP (Rubicon antibody) at dilution of 1:50 (under 40x lens).



Various lysates were subjected to SDS PAGE followed by western blot with 21444-1-AP (Rubicon antibody) at dilution of 1:6000 incubated at room temperature for 1.5 hours.



Immunofluorescent analysis of (4% PFA) fixed A431 cells using Rubicon antibody (21444-1-AP) at dilution of 1:200 and CoraLite@488-Conjugated Goat Anti-Rabbit IgG(H+L), CL594-Phalloidin (red).



Immunofluorescent analysis of (4% PFA) fixed HepG2 cells using Rubicon antibody (21444-1-AP) at dilution of 1:200 and CoraLite@488-Conjugated Goat Anti-Rabbit IgG(H+L), CL594-Phalloidin (red).