

For Research Use Only

Claudin 18 Polyclonal antibody

Catalog Number: 21126-1-AP

10 Publications



Basic Information

Catalog Number:

21126-1-AP

Concentration:

500 µg/ml

Source:

Rabbit

Isotype:

IgG

Immunogen Catalog Number:

AG15517

GenBank Accession Number:

BC146668

GeneID (NCBI):

51208

UNIPROT ID:

P56856

Full Name:

claudin 18

Calculated MW:

261 aa, 28 kDa

Observed MW:

28-29 kDa

Purification Method:

Antigen affinity purification

Recommended Dilutions:

WB: 1:500-1:1000

IP: 0.5-4.0 µg for 1.0-3.0 mg of total protein lysate

IHC: 1:500-1:2000

IF/ICC: 1:50-1:500

Applications

Tested Applications:

WB, IHC, IF/ICC, IP, ELISA

Cited Applications:

WB, IHC, IF

Species Specificity:

human, mouse, rat

Cited Species:

human, mouse, rat

Positive Controls:

WB: mouse kidney tissue,

IP: mouse stomach tissue,

IHC: human stomach tissue, human stomach cancer tissue, human ovary tumor tissue, human pancreas cancer tissue

IF/ICC: MKN-45 cells,

Note-IHC: suggested antigen retrieval with TE buffer pH 9.0; (*) Alternatively, antigen retrieval may be performed with citrate buffer pH 6.0

Background Information

Claudin 18 (CLDN18) belongs to the large claudin family of proteins, which are tetraspan transmembrane proteins of tight junctions (PMID: 11585919; 18036336). Claudins exhibit specific patterns of expression in different tissues (PMID: 15447685). CLDN18 is specifically expressed in the stomach and lung. CLDN18 has two alternatively spliced variants, CLDN18.1 and CLDN18.2. CLDN18.2 is a highly selective gastric lineage marker that determines the gastric phenotype in a neoplastic condition, whereas CLDN18.1 is lung specific (PMID: 11585919; 21832145). Altered CLDN18 expression has been reported in various human malignancies, including gastric cancer, lung adenocarcinoma, and pancreatic neoplasm (PMID: 17459057; 22076167; 21832145). This antibody can recognize both CLDN18.1 and CLDN18.2.

Notable Publications

Author	Pubmed ID	Journal	Application
Chunyan Wang	32160957	J Stroke Cerebrovasc Dis	IF
Ruixue Yang	31173170	Int J Mol Med	WB, IF
Yang Chen	35284551	Ann Transl Med	IHC

Storage

Storage:

Store at -20°C. Stable for one year after shipment.

Storage Buffer:

PBS with 0.02% sodium azide and 50% glycerol, pH7.3

Aliquoting is unnecessary for -20°C storage

For technical support and original validation data for this product please contact:

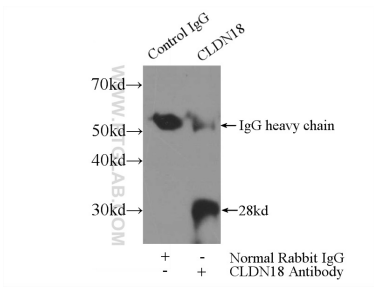
T: 4006900926

E: Proteintech-CN@ptglab.com

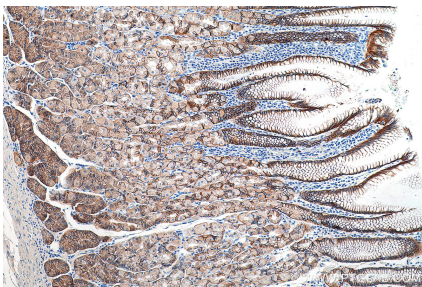
W: ptgcn.com

This product is exclusively available under Proteintech Group brand and is not available to purchase from any other manufacturer.

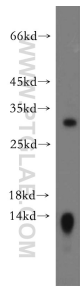
Selected Validation Data



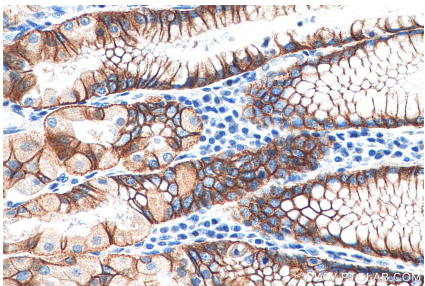
IP result of anti-Claudin 18 (IP:21126-1-AP, 3ug; Detection:21126-1-AP 1:500) with mouse stomach tissue lysate 4000ug.



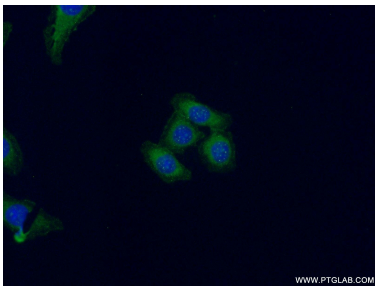
Immunohistochemical analysis of paraffin-embedded human stomach tissue slide using 21126-1-AP (Claudin 18 antibody) at dilution of 1:1000 (under 10x lens).



mouse kidney tissue were subjected to SDS PAGE followed by western blot with 21126-1-AP (Claudin 18 antibody) at dilution of 1:500 incubated at room temperature for 1.5 hours.



Immunohistochemical analysis of paraffin-embedded human stomach tissue slide using 21126-1-AP (Claudin 18 antibody) at dilution of 1:1000 (under 40x lens).



Immunofluorescent analysis of (-20°C Ethanol) fixed MKN-45 cells using 21126-1-AP (Claudin 18 antibody) at dilution of 1:50 and Alexa Fluor 488-conjugated Goat Anti-Rabbit IgG(H+L).