

For Research Use Only

# EPCAM/CD326 Polyclonal antibody

Catalog Number: 21050-1-AP

Featured Product

89 Publications



## Basic Information

### Catalog Number:

21050-1-AP

### Concentration:

500 ug/ml

### Source:

Rabbit

### Isotype:

IgG

### Immunogen Catalog Number:

AG15393

### GenBank Accession Number:

BC014785

### GeneID (NCBI):

4072

### UNIPROT ID:

P16422

### Full Name:

epithelial cell adhesion molecule

### Calculated MW:

314 aa, 35 kDa

### Observed MW:

35-40 kDa

### Purification Method:

Antigen affinity purification

### Recommended Dilutions:

WB: 1:2000-1:10000

IHC: 1:500-1:2000

IF-P: 1:500-1:2000

IF-Fro: 1:200-1:800

IF/ICC: 1:50-1:500

FC: 0.50 ug per 10<sup>6</sup> cells in a 100 µl suspension

## Applications

### Tested Applications:

WB, IHC, IF/ICC, IF-P, IF-Fro, FC, ELISA

### Cited Applications:

WB, IHC, IF, FC, IP, ChIP

### Species Specificity:

human, mouse, rat

### Cited Species:

human, mouse, rat, pig, canine

**Note-IHC: suggested antigen retrieval with TE buffer pH 9.0; (\*) Alternatively, antigen retrieval may be performed with citrate buffer pH 6.0**

### Positive Controls:

WB: A431 cells, mouse colon tissue, rat colon tissue

IHC: human colon cancer tissue, mouse colon tissue, human breast cancer tissue, human colon tissue, mouse stomach tissue

IF-P: mouse colon tissue, MCF-7 cells, mouse lung tissue

IF-Fro: mouse colon tissue,

IF/ICC: HT-29 cells, MCF-7 cells

FC: HT-29 cells,

## Background Information

Epithelial cell adhesion molecule (EpCAM, CD326) is a type I transmembrane glycoprotein that functions as a homophilic, epithelial-specific intercellular cell-adhesion molecule. In addition to cell adhesion, EpCAM is also involved in cellular signaling, cell migration, proliferation, and differentiation. EpCAM is highly expressed on most carcinomas and therefore of potential use as a diagnostic and prognostic marker for a variety of carcinomas, and has become a therapeutic target. EpCAM may occur in distinct forms due to glycosylation. (PMID: 20837599; 19249674; 21576002; 22647938; 12691820)

## Notable Publications

Author	Pubmed ID	Journal	Application
Xue Liu	30246502	J Cell Physiol	WB,IHC,IF
Chaoqun Liu	34551797	J Exp Clin Cancer Res	WB,IF
Haiyong Wang	27432228	Mol Med Rep	WB,IHC

## Storage

### Storage:

Store at -20°C. Stable for one year after shipment.

### Storage Buffer:

PBS with 0.02% sodium azide and 50% glycerol, pH7.3

Aliquoting is unnecessary for -20°C storage

For technical support and original validation data for this product please contact:

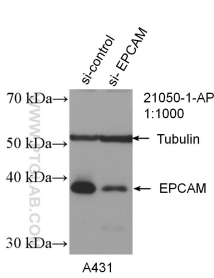
T: 4006900926

E: [Proteintech-CN@ptglab.com](mailto:Proteintech-CN@ptglab.com)

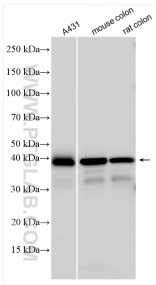
W: [ptgcn.com](http://ptgcn.com)

**This product is exclusively available under Proteintech Group brand and is not available to purchase from any other manufacturer.**

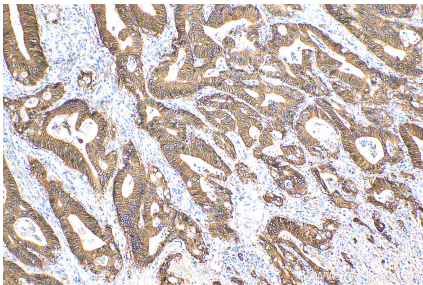
# Selected Validation Data



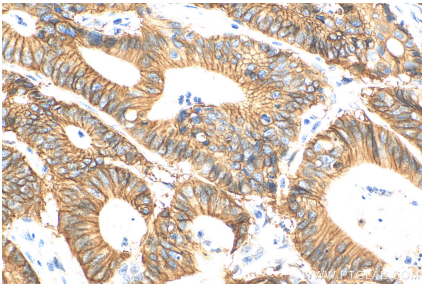
WB result of EPCAM antibody (21050-1-AP; 1:1000; incubated at room temperature for 1.5 hours) with sh-Control and sh-EPCAM transfected A431 cells.



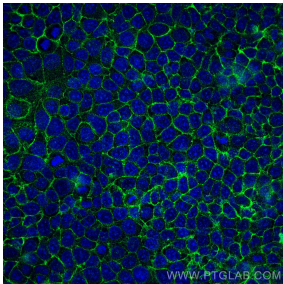
Various lysates were subjected to SDS PAGE followed by western blot with 21050-1-AP (EPCAM/CD326 antibody) at dilution of 1:5000 incubated at room temperature for 1.5 hours.



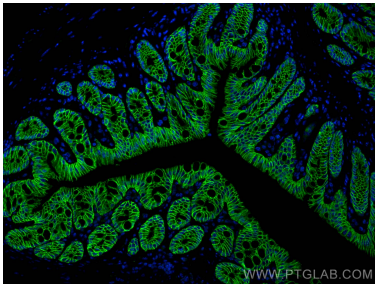
Immunohistochemical analysis of paraffin-embedded human colon cancer tissue slide using 21050-1-AP (EPCAM/CD326 antibody) at dilution of 1:1000 (under 10x lens). Heat mediated antigen retrieval with Tris-EDTA buffer (pH 9.0).



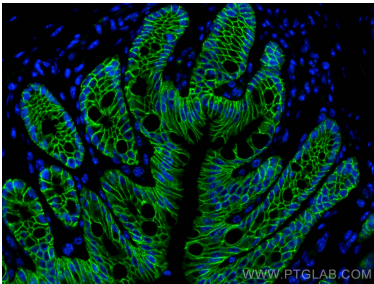
Immunohistochemical analysis of paraffin-embedded human colon cancer tissue slide using 21050-1-AP (EPCAM/CD326 antibody) at dilution of 1:1000 (under 40x lens). Heat mediated antigen retrieval with Tris-EDTA buffer (pH 9.0).



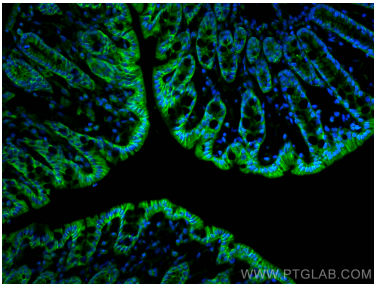
Immunofluorescent analysis of (-20°C Ethanol) fixed MCF-7 cells using EPCAM antibody (21050-1-AP) at dilution of 1:100 and CoraLite®488-Conjugated AffiniPure Goat Anti-Rabbit IgG(H+L).



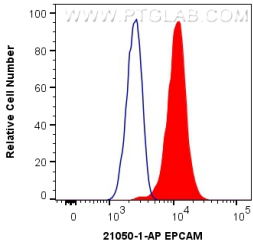
Immunofluorescent analysis of (4% PFA) fixed mouse colon tissue using EPCAM/CD326 antibody (21050-1-AP) at dilution of 1:1000 and CoraLite®488-Conjugated AffiniPure Goat Anti-Rabbit IgG(H+L).



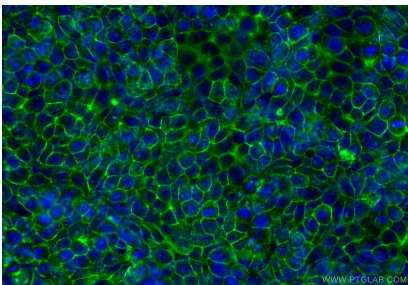
Immunofluorescent analysis of (4% PFA) fixed mouse colon tissue using EPCAM/CD326 antibody (21050-1-AP) at dilution of 1:1000 and CoraLite®488-Conjugated AffiniPure Goat Anti-Rabbit IgG(H+L).



Immunofluorescent analysis of (4% PFA) fixed frozen OCT-embedded mouse colon tissue using EPCAM/CD326 antibody (21050-1-AP) at dilution of 1:400 and CoraLite®488-Conjugated AffiniPure Goat Anti-Rabbit IgG(H+L) (SA00013-2).



1x10<sup>6</sup> HT-29 cells were surface stained with 0.5 ug EPCAM/CD326 Polyclonal antibody (21050-1-AP) and CoraLite®488-Conjugated AffiniPure Goat Anti-Rabbit IgG(H+L)(red), or 0.5 ug Control Antibody (blue). Cells were not fixed.



Immunofluorescent analysis of (-20°C Methanol)  
fixed HT-29 cells using EPCAM/CD326 antibody  
(21050-1-AP) at dilution of 1:200 and Multi-rAb  
CoraLite® Plus 488-Goat Anti-Rabbit Recombinant  
Secondary Antibody (H+L) (RGAR002).